

PLAN, PROFILES & SECTIONS OF THE

ENNS DRAIN - HIGHWAY 77 BRANCH (PHILIPS ENGINEERING NETWORK 8)

IN THE
MUNICIPALITY OF LEAMINGTON
IN THE
COUNTY OF ESSEX, ONTARIO

Antonio B. Peralta
ANTONIO B. PERALTA, P.ENG.



N. J. PERALTA ENGINEERING LTD.
45 DIVISION STREET NORTH
KINGSVILLE, ONTARIO
N9Y 1E1

DATE: MARCH 10th, 2011

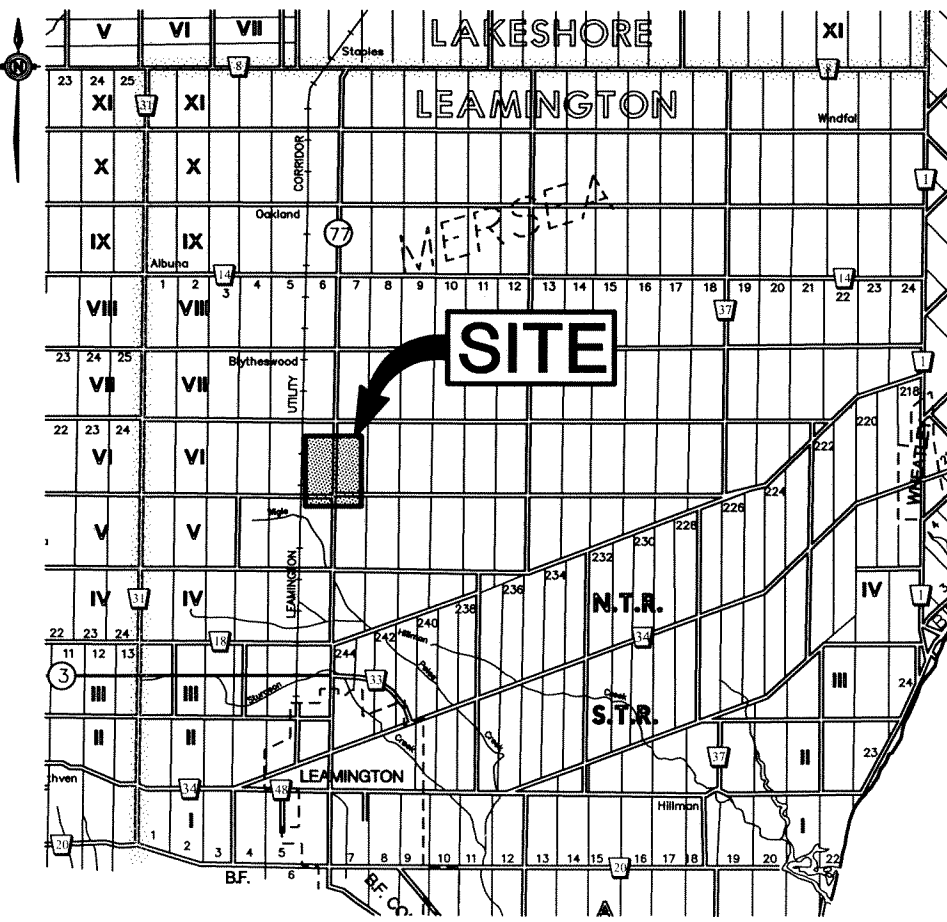
MUNICIPALITY OF LEAMINGTON

BENCHMARK:

MAYOR: JOHN PATERSON
CLERK: BRIAN SWEET
DRAINAGE
SUPERINTENDENT: LU-ANN BARRETO

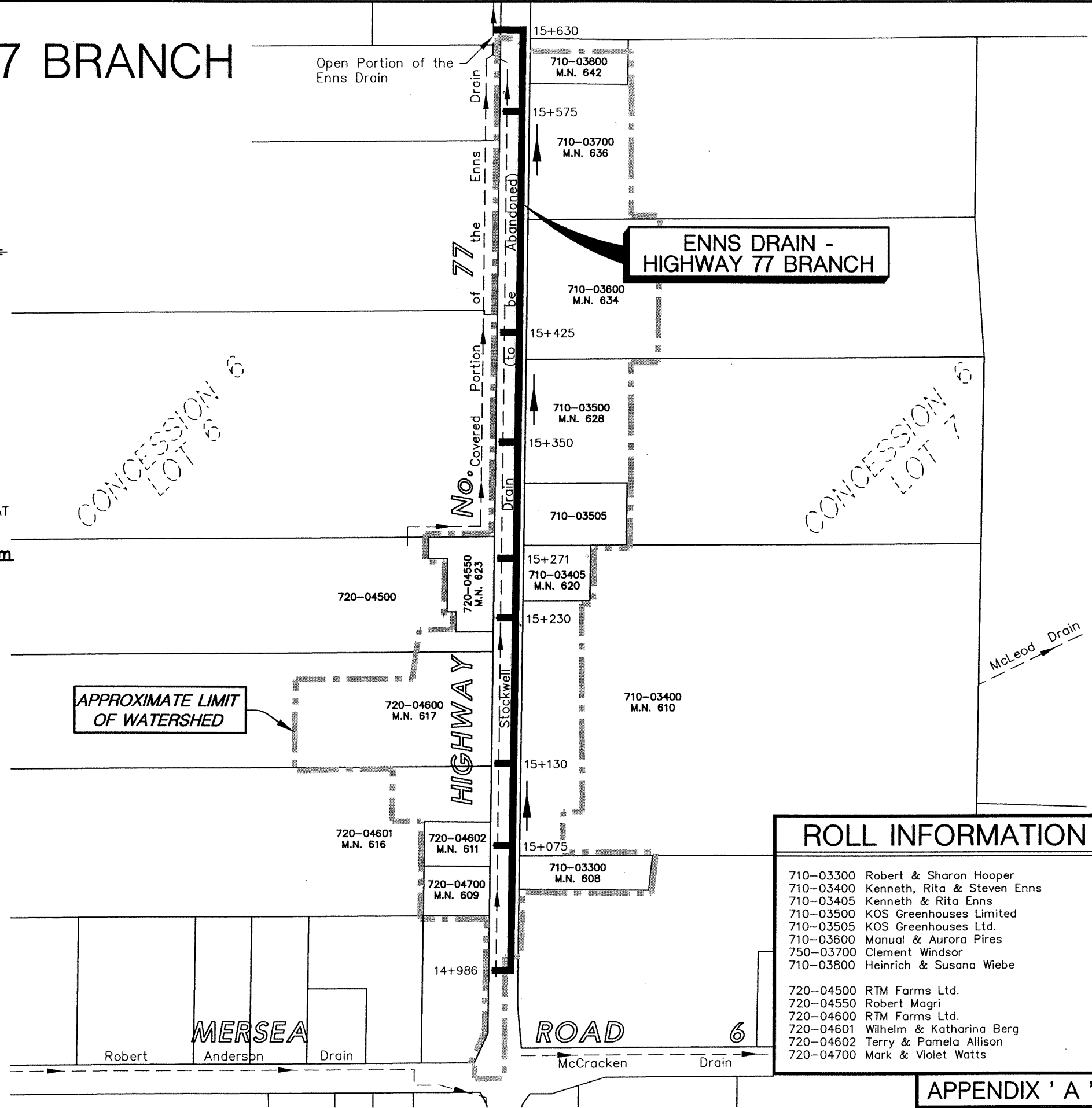
TOP OF NORTHEAST CORNER OF CONCRETE PORCH AT
M.N. 617 LOCATED ON THE WEST SIDE OF KING'S
HIGHWAY 77 STA. 15+176.5. (BM#8013)
ELEV. = 197.714m

Z:\Working Files\CAD\LandProjects\2\07028\dwg\C - HWY 77 BR. DF ENNS DR.D07-028C1.dwg 07/03/2011 7:46:48 AM EST



KEY PLAN

Scale = 1:40,000



APPROXIMATE LIMIT
OF WATERSHED

ROLL INFORMATION

710-03300	Robert & Sharon Hooper
710-03400	Kenneth, Rita & Steven Enns
710-03405	Kenneth & Rita Enns
710-03500	KOS Greenhouses Limited
710-03505	KOS Greenhouses Ltd.
710-03600	Manual & Aurora Pires
750-03700	Clement Windsor
710-03800	Heinrich & Susana Wiebe
720-04500	RTM Farms Ltd.
720-04550	Robert Magri
720-04600	RTM Farms Ltd.
720-04601	Wilhelm & Katharina Berg
720-04602	Terry & Pamela Allison
720-04700	Mark & Violet Watts

APPENDIX 'A'

Project No.
D07-028C

WATERSHED PLAN

Scale = 1:3,000

METRIC

DIMENSIONS ARE IN METRES AND/OR MILLIMETRES UNLESS OTHERWISE SHOWN

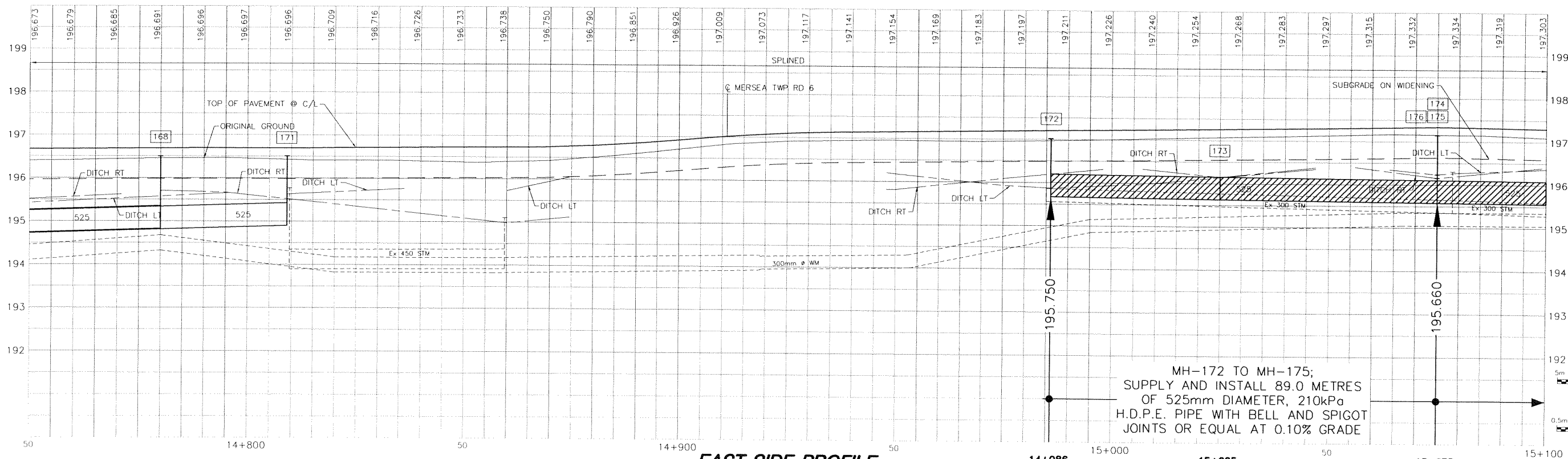
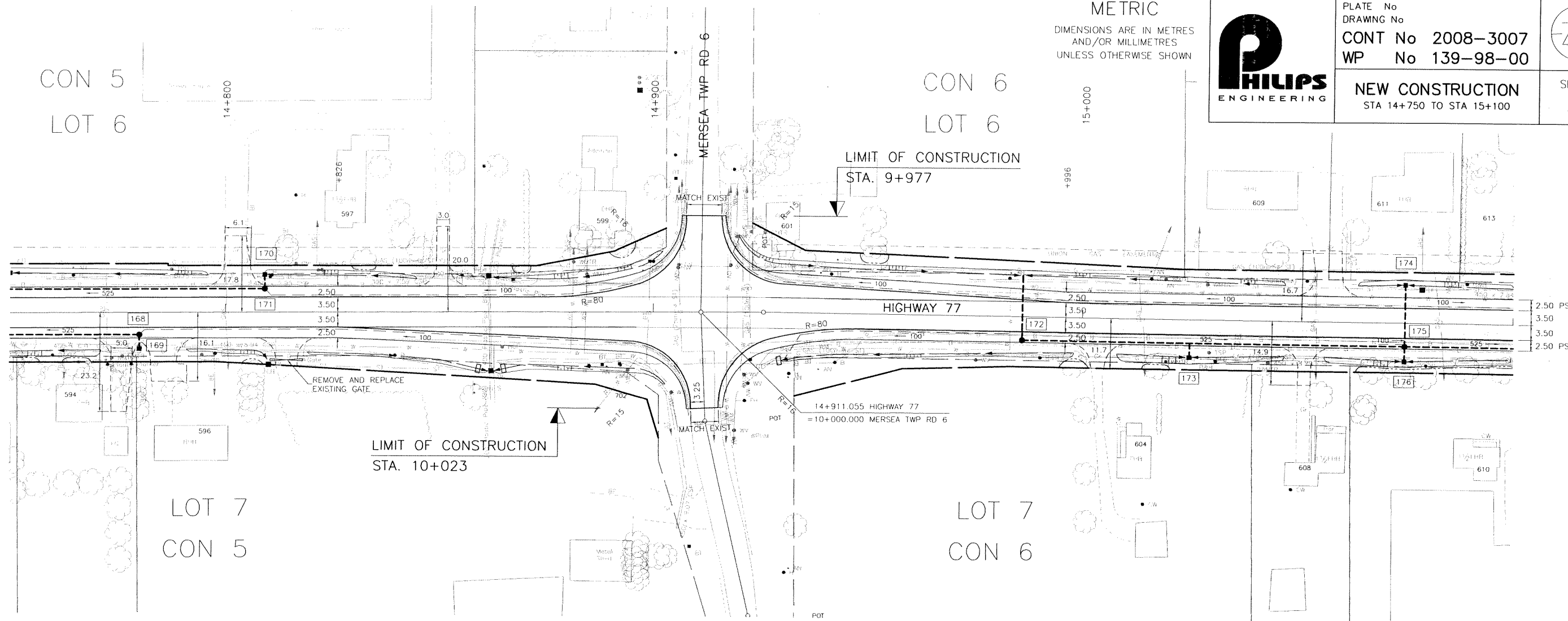


PLATE No
DRAWING No
CONT No 2008-3007
WP No 139-98-00

NEW CONSTRUCTION
STA 14+750 TO STA 15+100



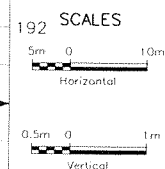
SHEET
38



EAST SIDE PROFILE

Scale = 1:1000 Hor.
1:10 Vert.

MH-172 TO MH-175;
SUPPLY AND INSTALL 89.0 METRES
OF 525mm DIAMETER, 210kPa
H.D.P.E. PIPE WITH BELL AND SPIGOT
JOINTS OR EQUAL AT 0.10% GRADE



METRIC
DIMENSIONS ARE IN METRES
AND/OR MILLIMETRES
UNLESS OTHERWISE SHOWN

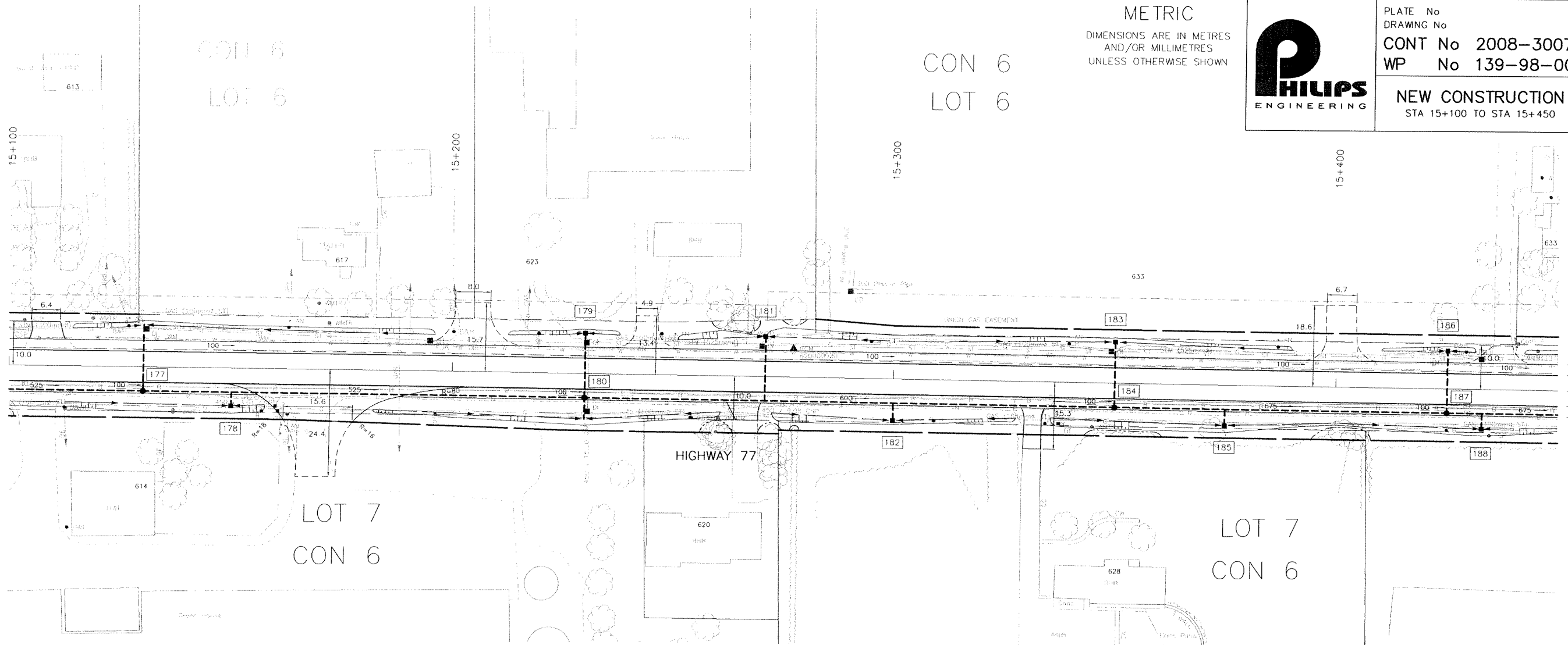


PLATE No
DRAWING No
CONT No 2008-3007
WP No 139-98-00

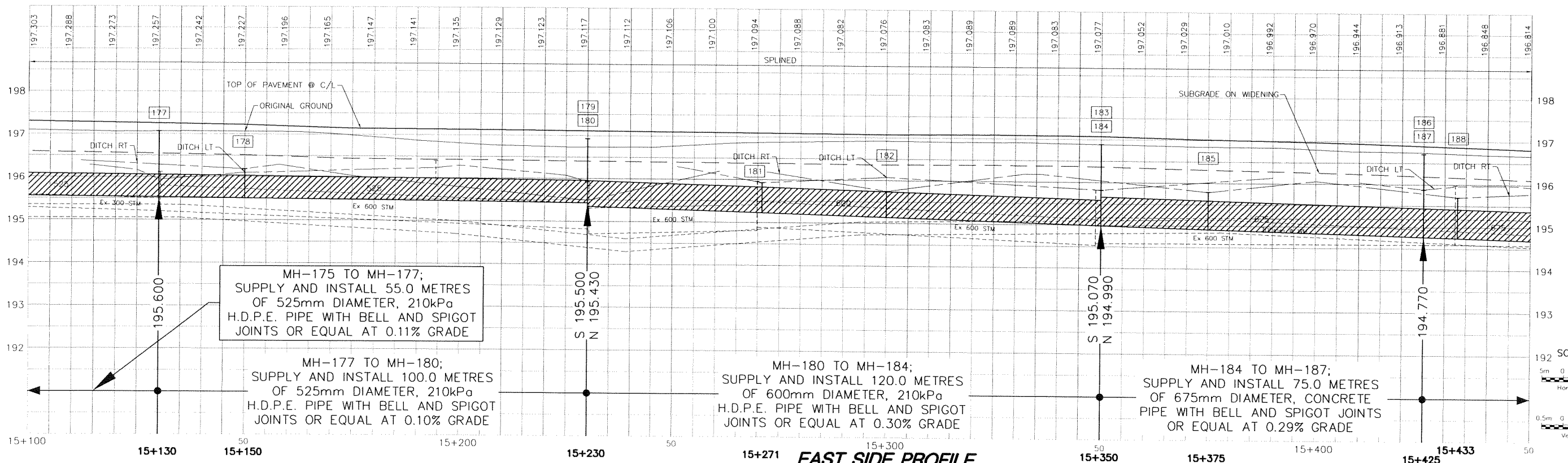
NEW CONSTRUCTION
STA 15+100 TO STA 15+450



SHEET
39



2.50 PS
3.50
3.50
2.50 PS



MH-175 TO MH-177;
SUPPLY AND INSTALL 55.0 METRES
OF 525mm DIAMETER, 210kPa
H.D.P.E. PIPE WITH BELL AND SPIGOT
JOINTS OR EQUAL AT 0.11% GRADE

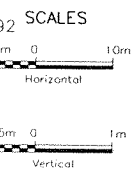
MH-177 TO MH-180;
SUPPLY AND INSTALL 100.0 METRES
OF 525mm DIAMETER, 210kPa
H.D.P.E. PIPE WITH BELL AND SPIGOT
JOINTS OR EQUAL AT 0.10% GRADE

MH-180 TO MH-184;
SUPPLY AND INSTALL 120.0 METRES
OF 600mm DIAMETER, 210kPa
H.D.P.E. PIPE WITH BELL AND SPIGOT
JOINTS OR EQUAL AT 0.30% GRADE

MH-184 TO MH-187;
SUPPLY AND INSTALL 75.0 METRES
OF 675mm DIAMETER, CONCRETE
PIPE WITH BELL AND SPIGOT JOINTS
OR EQUAL AT 0.29% GRADE

EAST SIDE PROFILE

Scale = 1:1000 Hor.
1:10 Vert.



METRIC
DIMENSIONS ARE IN METRES
AND/OR MILLIMETRES
UNLESS OTHERWISE SHOWN

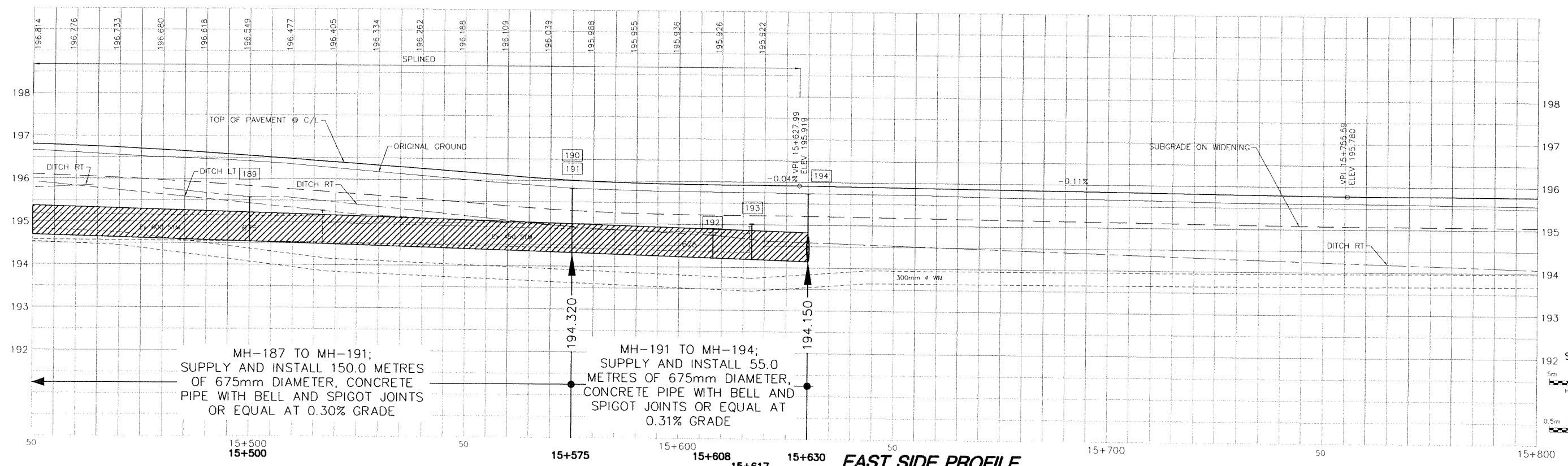
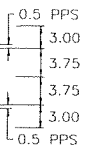
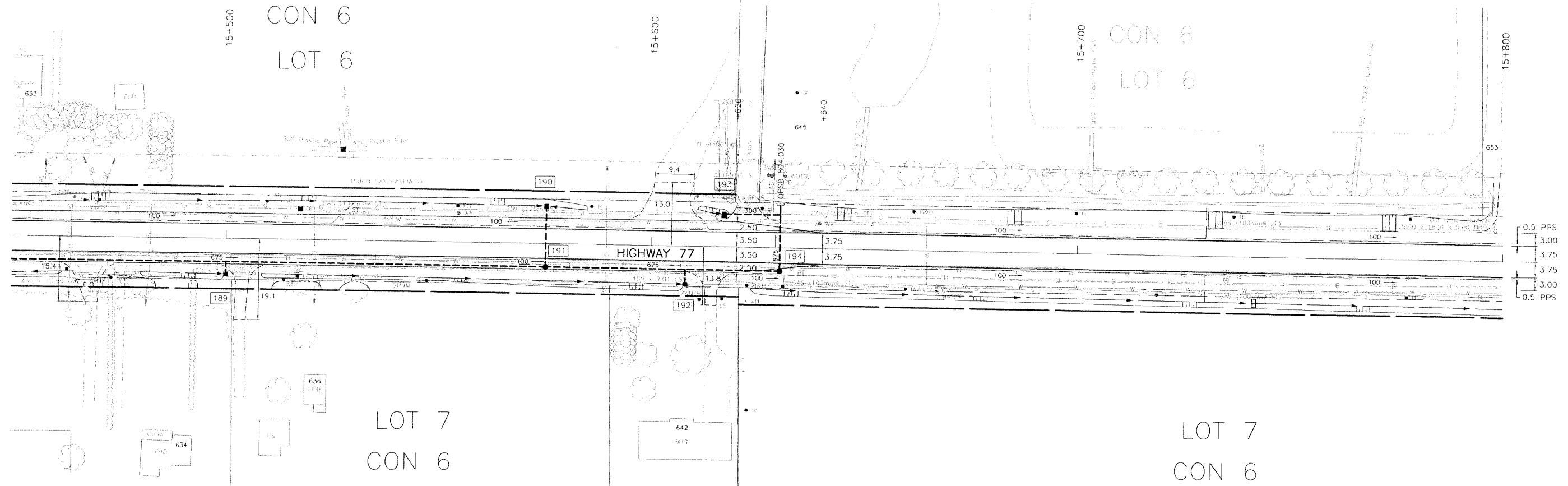


PLATE No
DRAWING No
CONT No 2008-3007
WP No 139-98-00



NEW CONSTRUCTION
STA 15+450 TO STA 15+800

SHEET
40

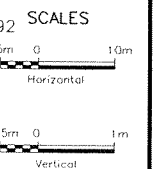


MH-187 TO MH-191;
SUPPLY AND INSTALL 150.0 METRES
OF 675mm DIAMETER, CONCRETE
PIPE WITH BELL AND SPIGOT JOINTS
OR EQUAL AT 0.30% GRADE

MH-191 TO MH-194;
SUPPLY AND INSTALL 55.0
METRES OF 675mm DIAMETER,
CONCRETE PIPE WITH BELL AND
SPIGOT JOINTS OR EQUAL AT
0.31% GRADE

EAST SIDE PROFILE

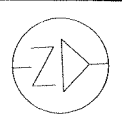
Scale = 1:1000 Hor.
1:10 Vert.



METRIC
DIMENSIONS ARE IN METRES
AND/OR MILLIMETRES
UNLESS OTHERWISE SHOWN

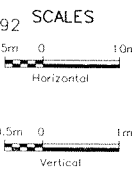
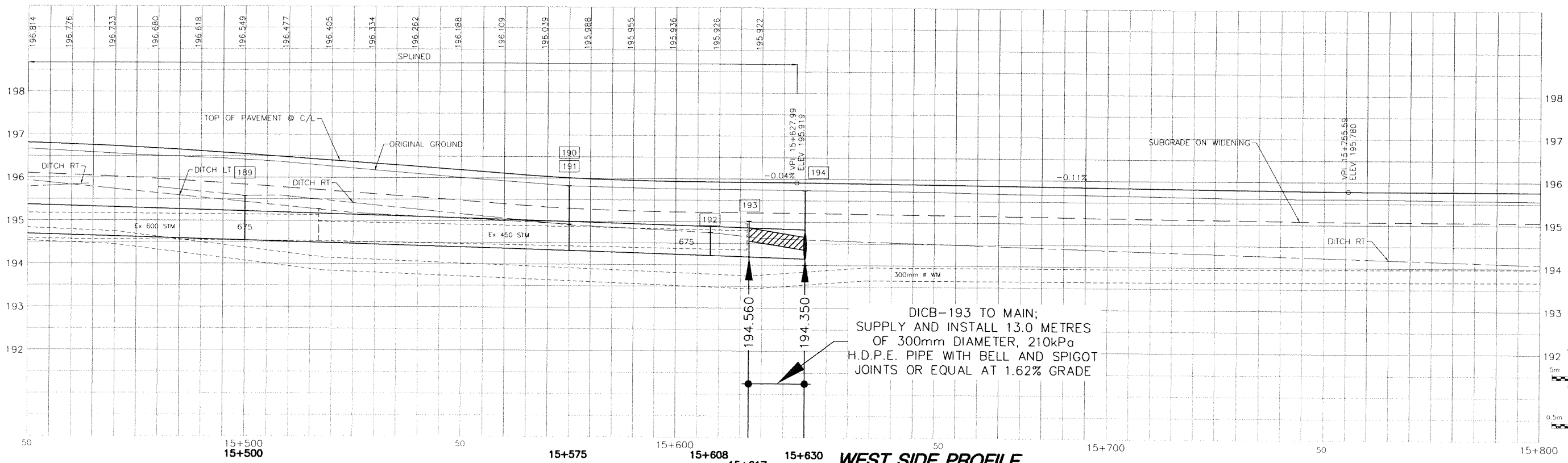
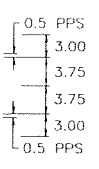
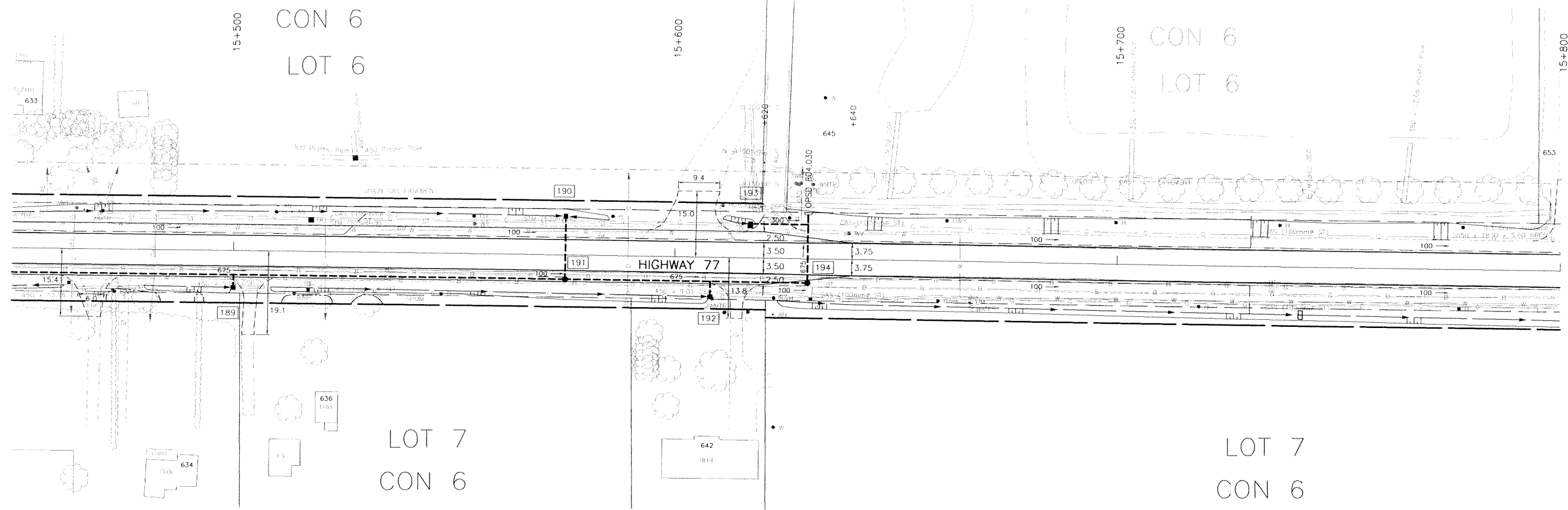


PLATE No
DRAWING No
CONT No 2008-3007
WP No 139-98-00



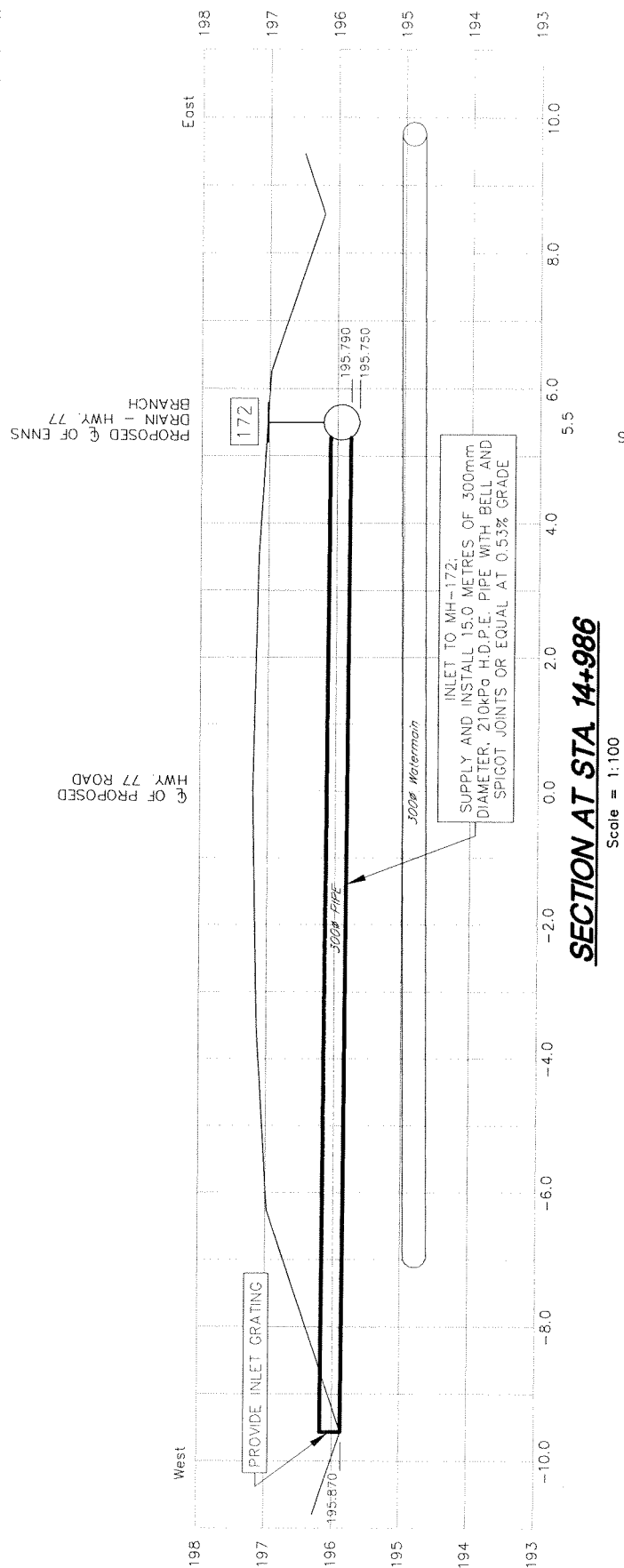
NEW CONSTRUCTION
STA 15+450 TO STA 15+800

SHEET
40



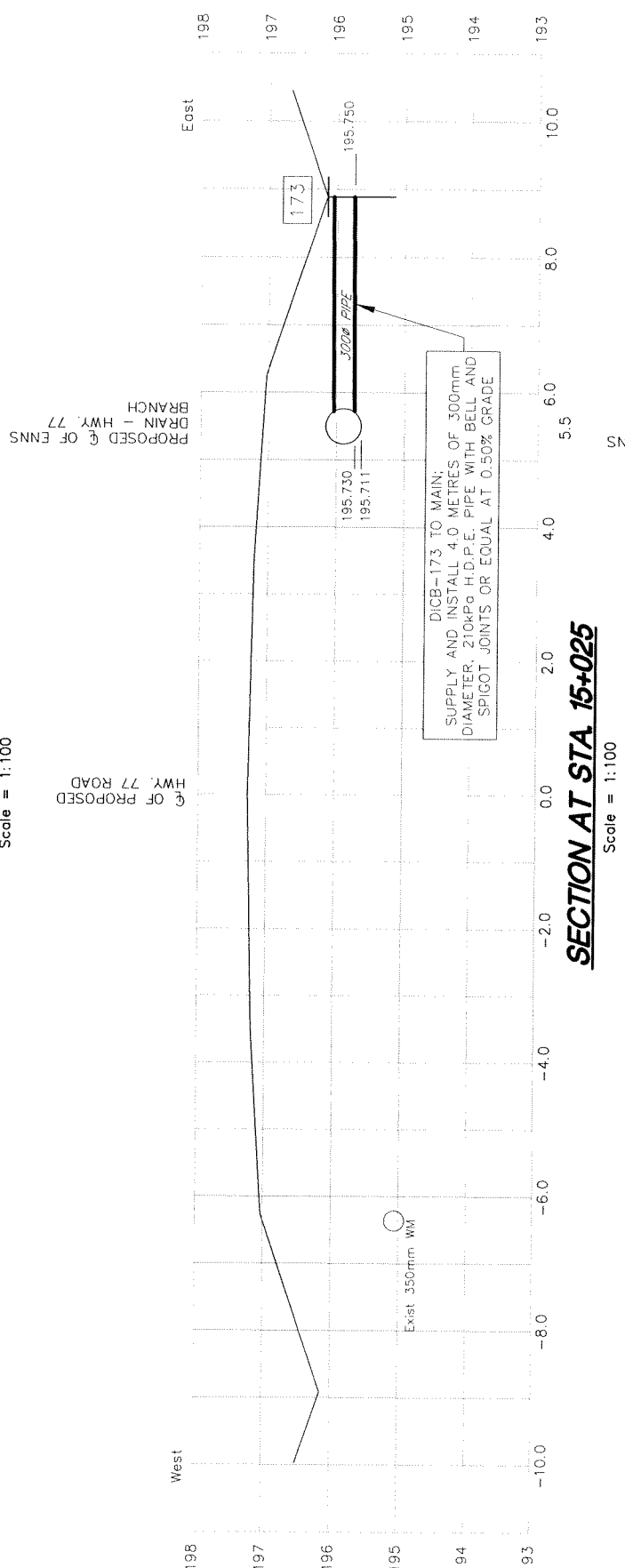
WEST SIDE PROFILE

Scale = 1:1000 Hor.
1:10 Vert.



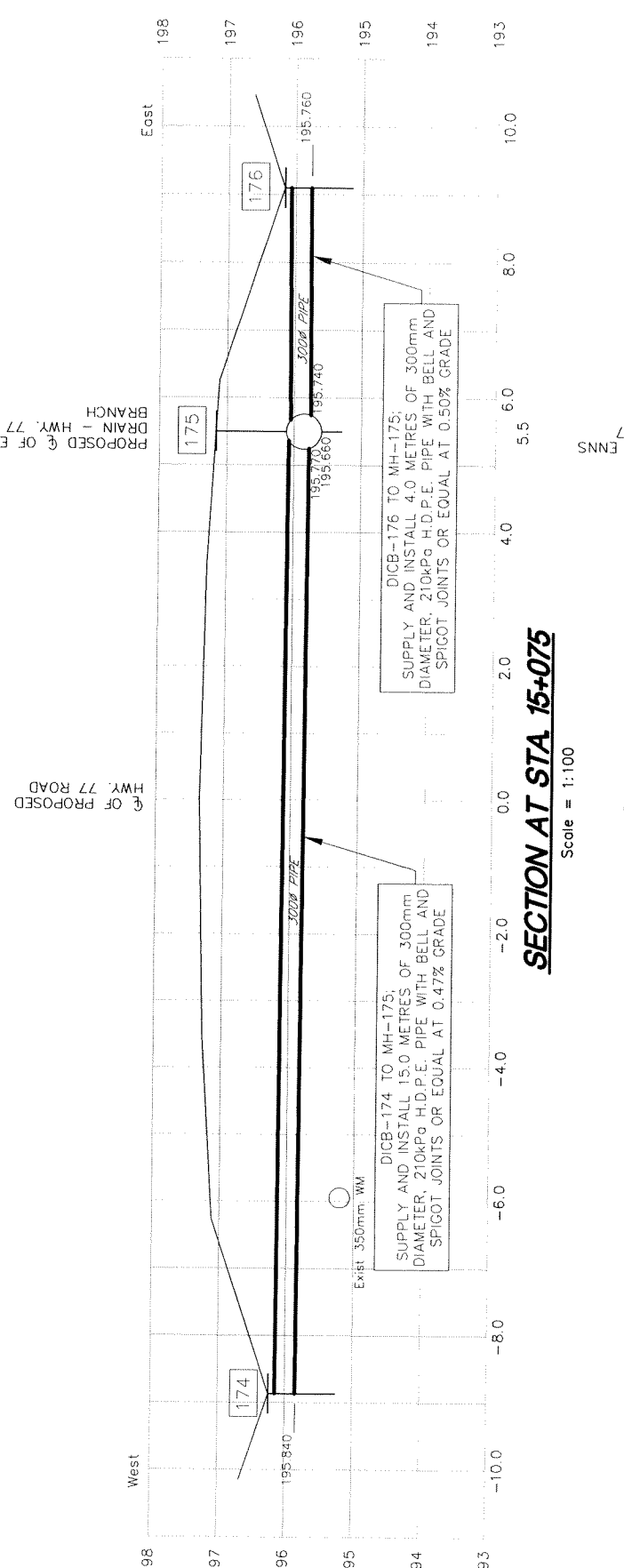
SECTION AT STA 14+986

Scale = 1:100



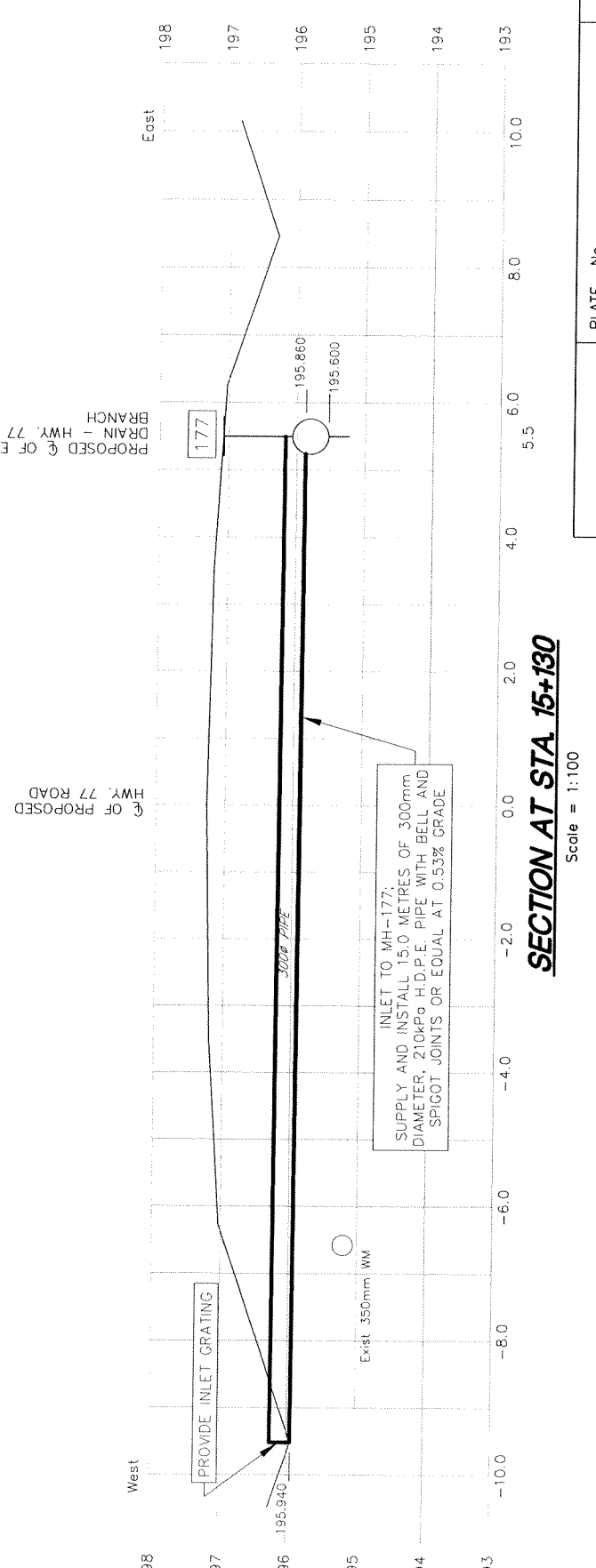
SECTION AT STA 15+025

Scale = 1:100



SECTION AT STA 15+075

Scale = 1:100



SECTION AT STA 15+130

Scale = 1:100

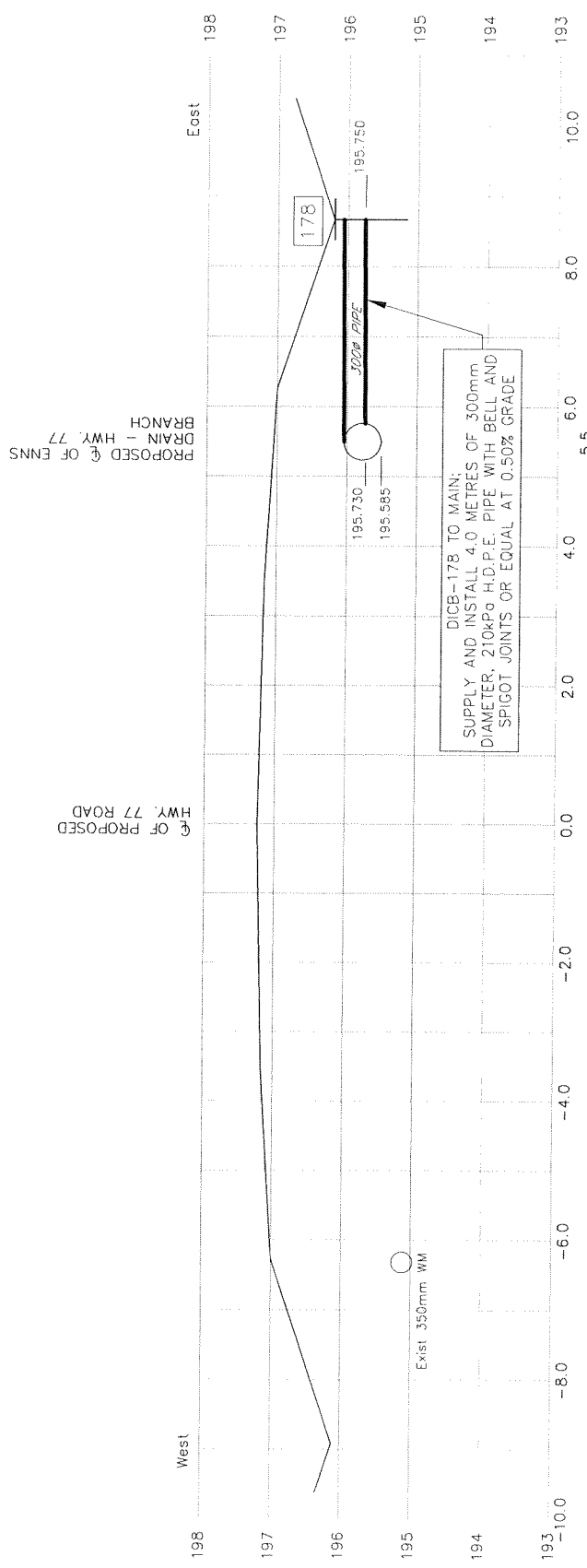
METRIC
DIMENSIONS ARE IN METRES
AND/OR MILLIMETRES
UNLESS OTHERWISE SHOWN



PLATE No
DRAWING No
CONT No 2008-3007
WP No 139-98-00

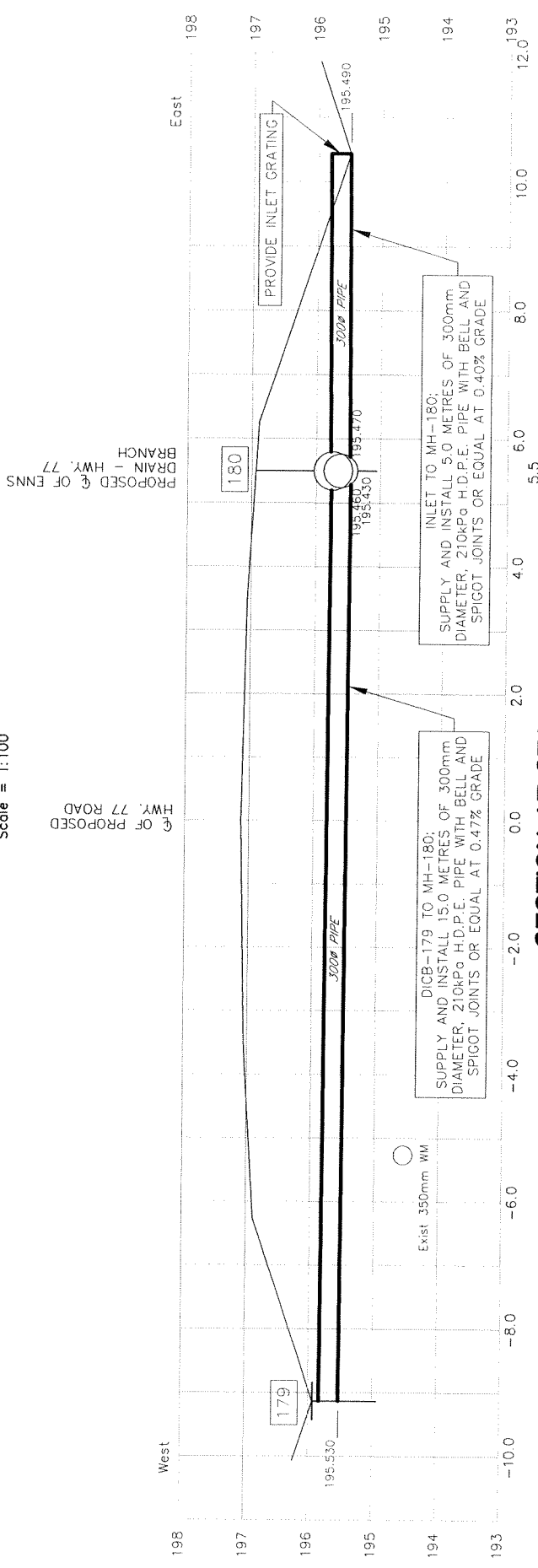
CROSS SECTIONS

SHEET
XX



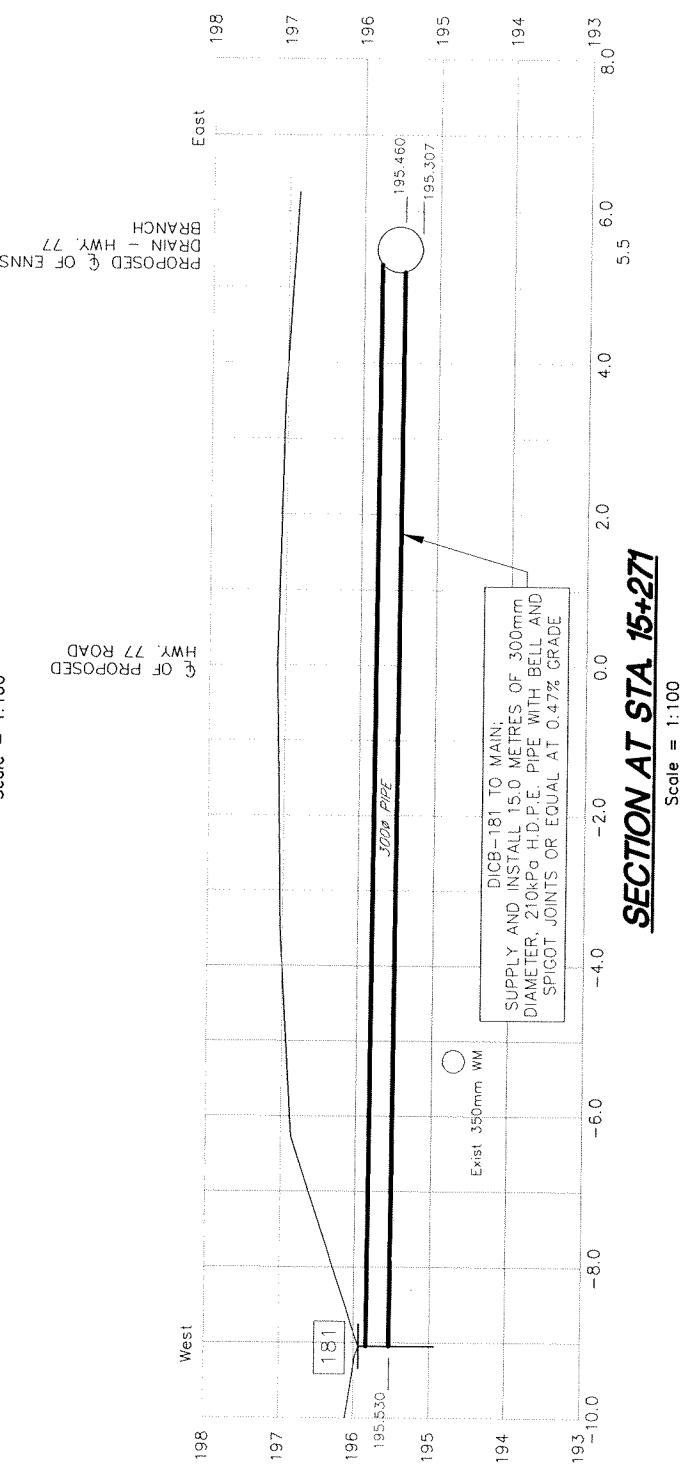
SECTION AT STA 15+150

Scale = 1:100



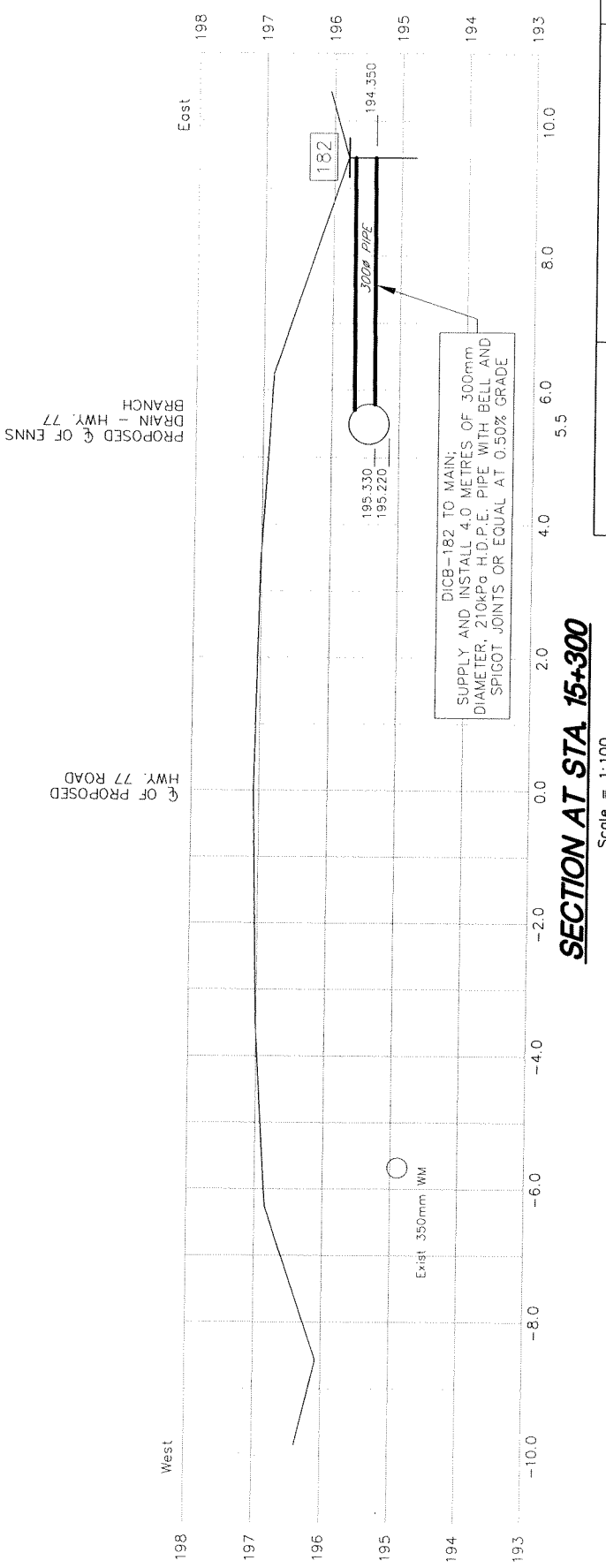
SECTION AT STA 15+230

Scale = 1:100



SECTION AT STA 15+271

Scale = 1:100



SECTION AT STA 15+300

Scale = 1:100

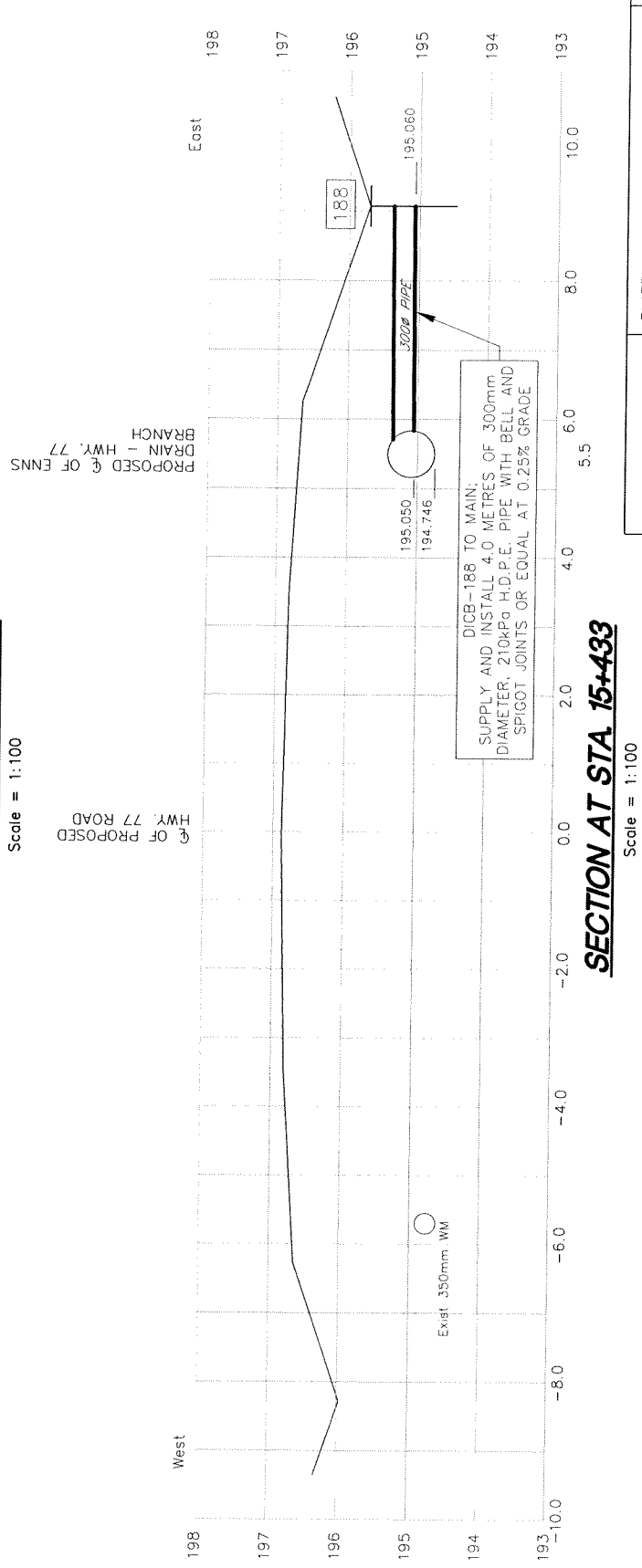
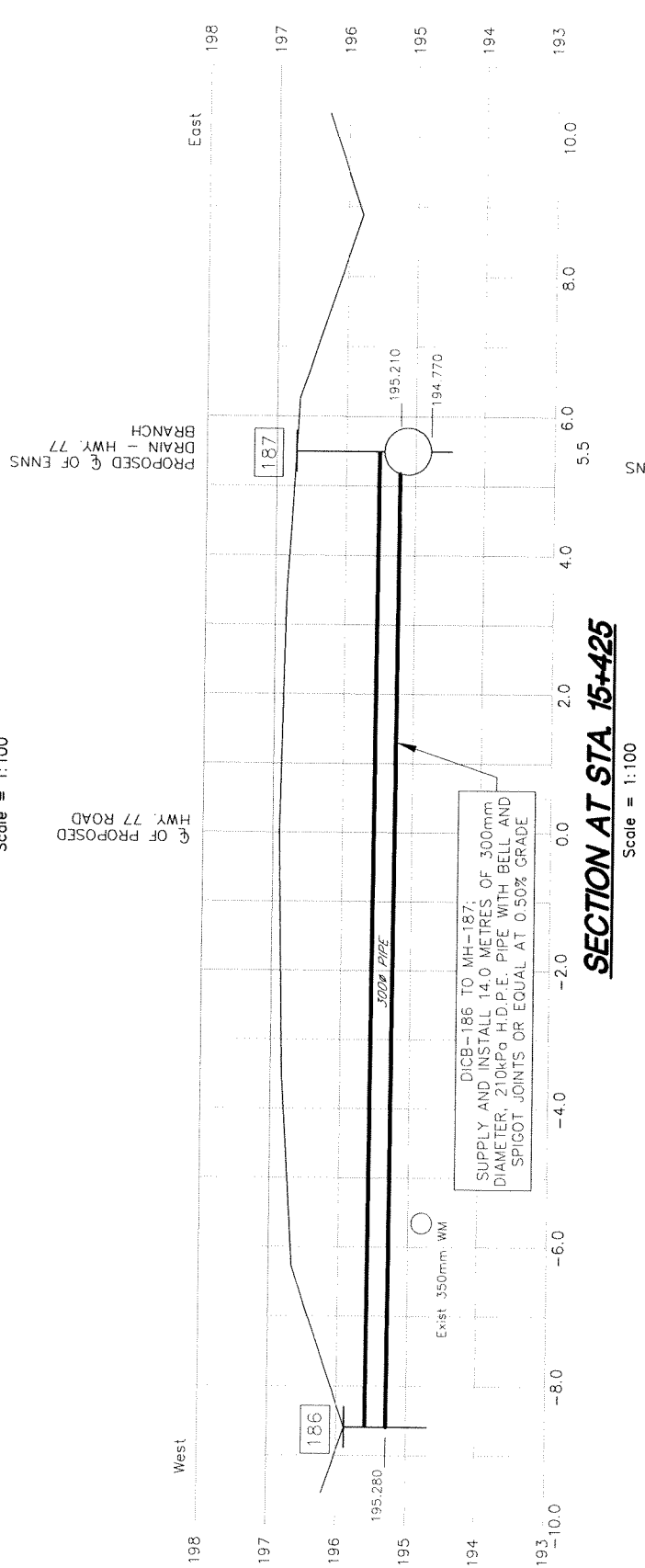
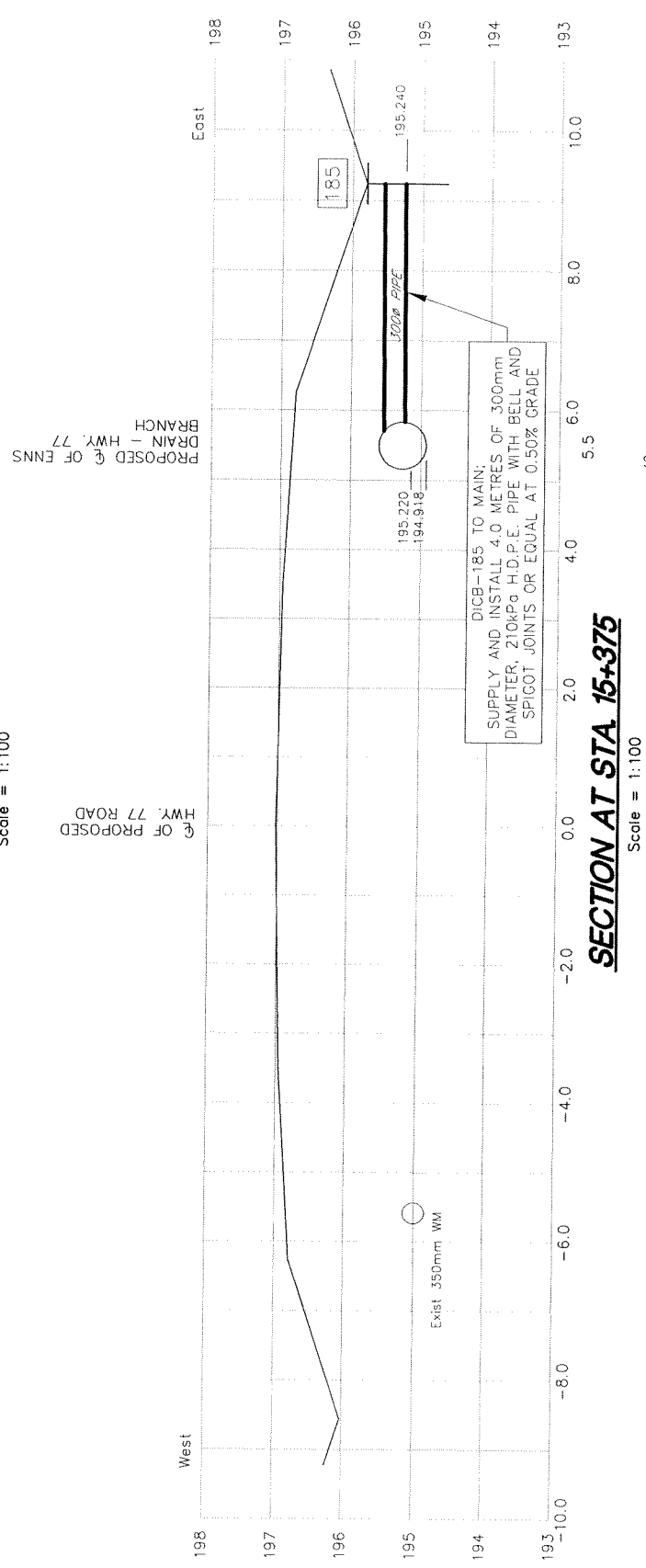
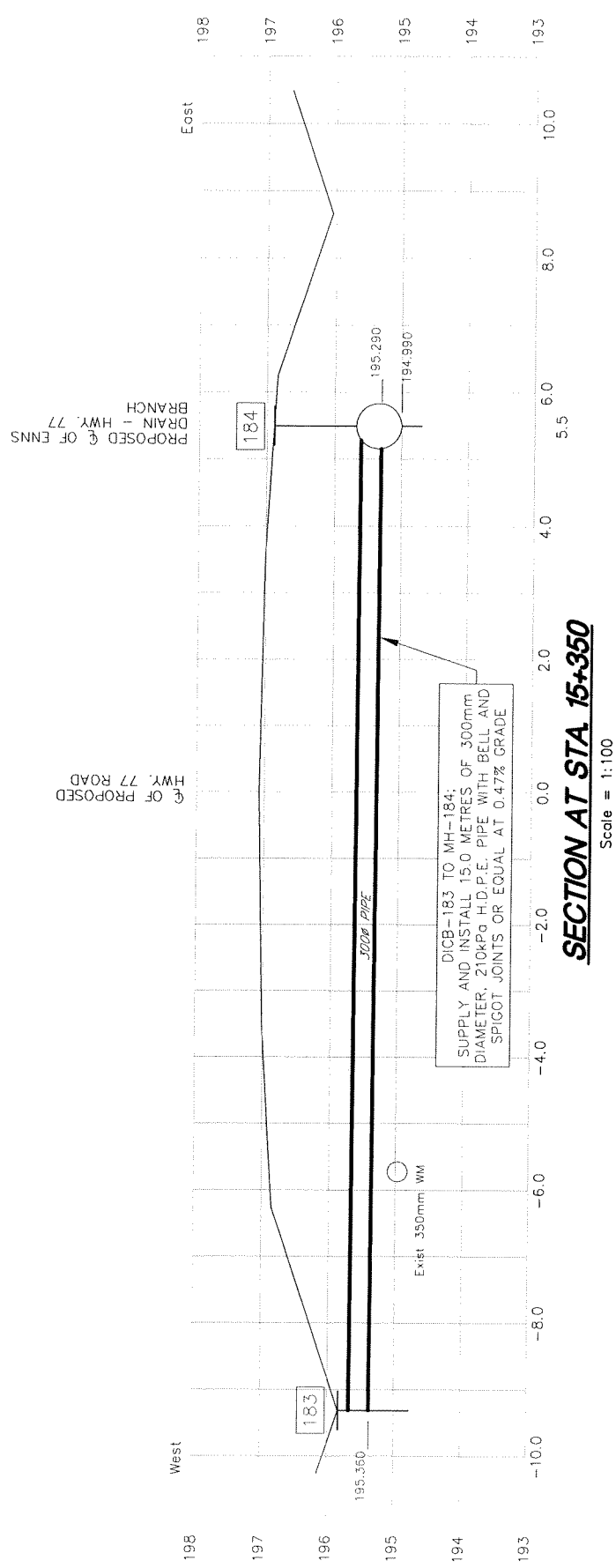
METRIC
DIMENSIONS ARE IN METRES
AND/OR MILLIMETRES
UNLESS OTHERWISE SHOWN



PLATE No
DRAWING No
CONT No 2008-3007
WP No 139-98-00

CROSS SECTIONS

SHEET
XX

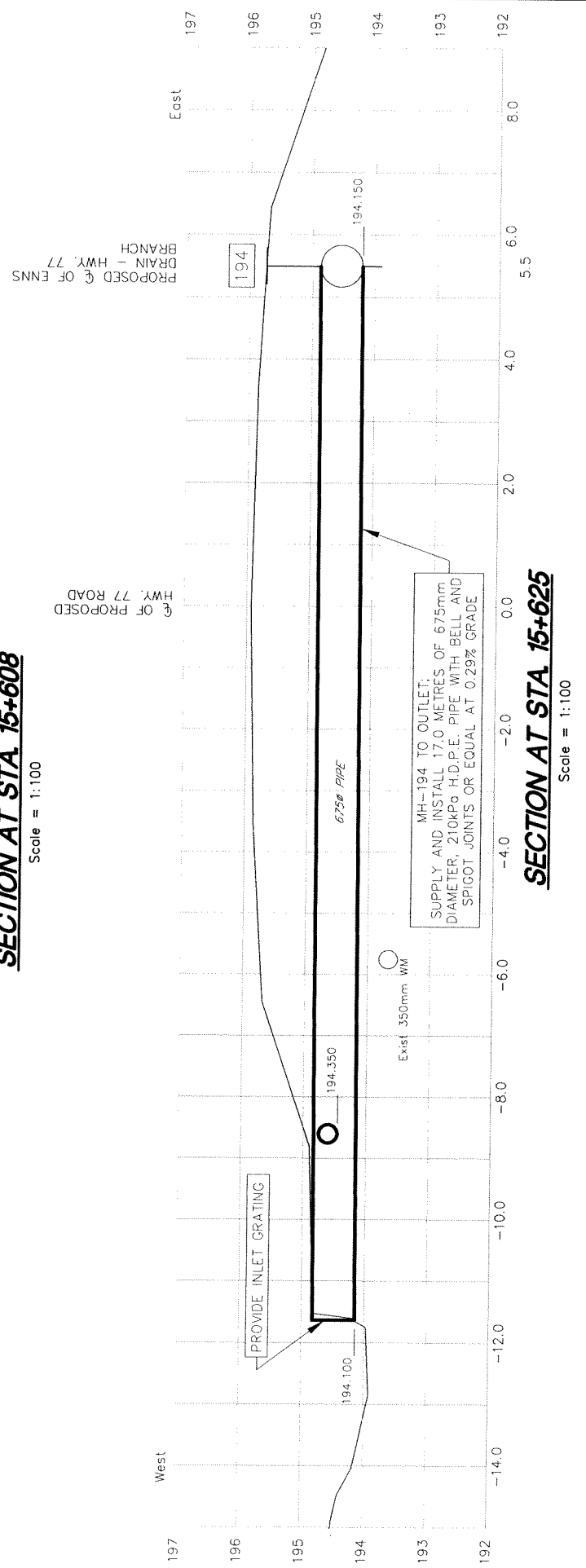
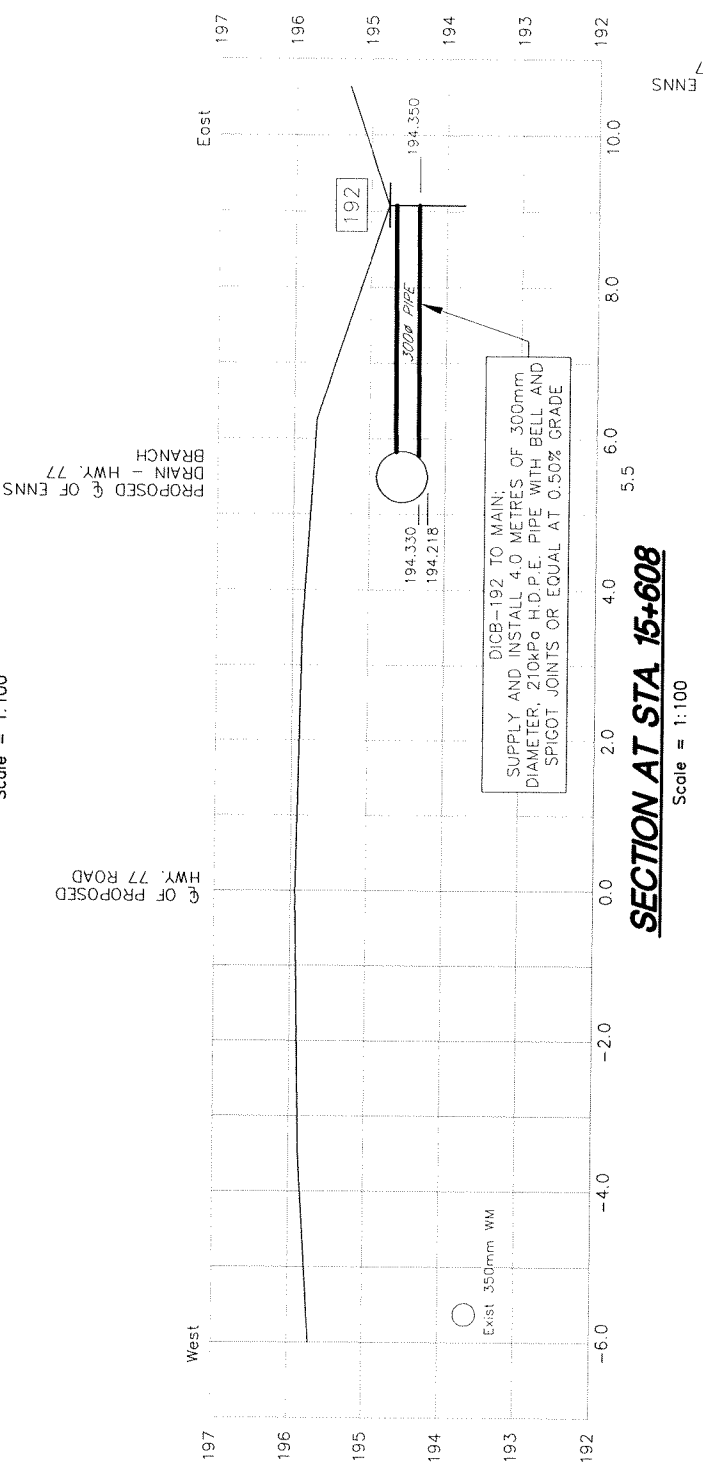
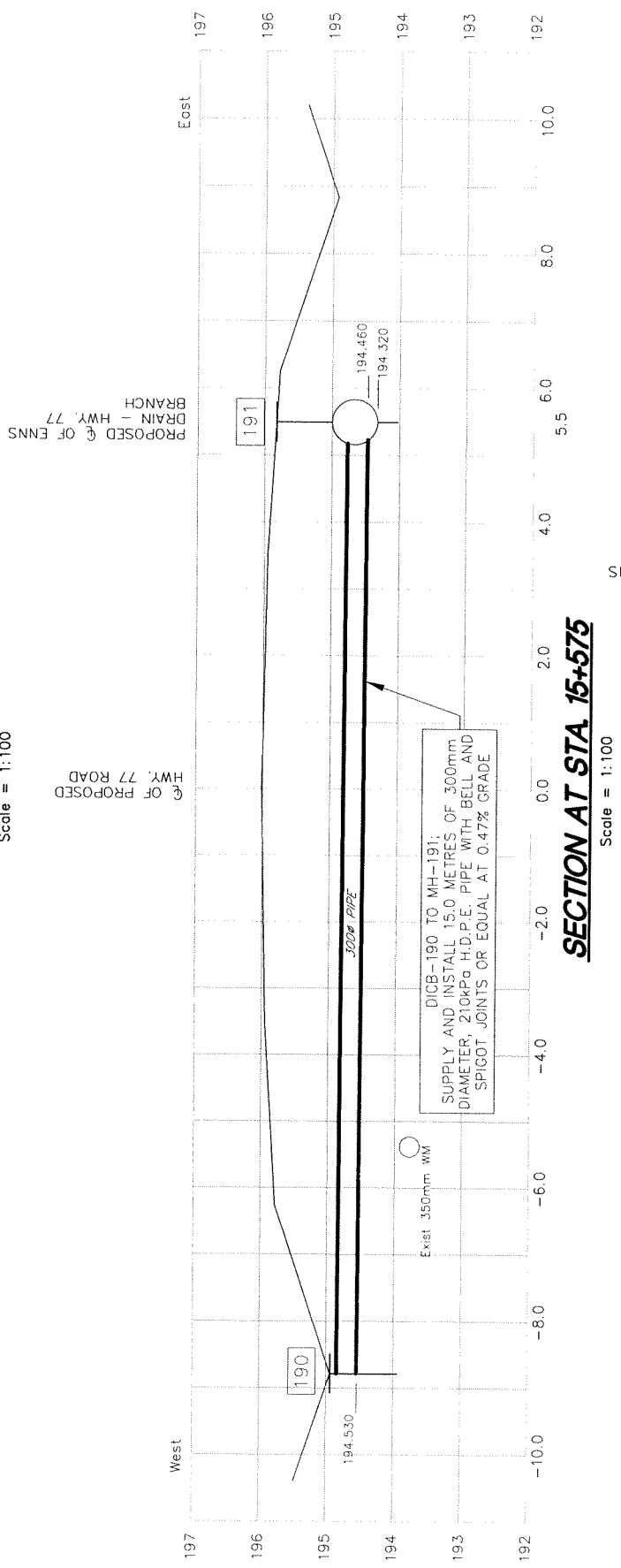
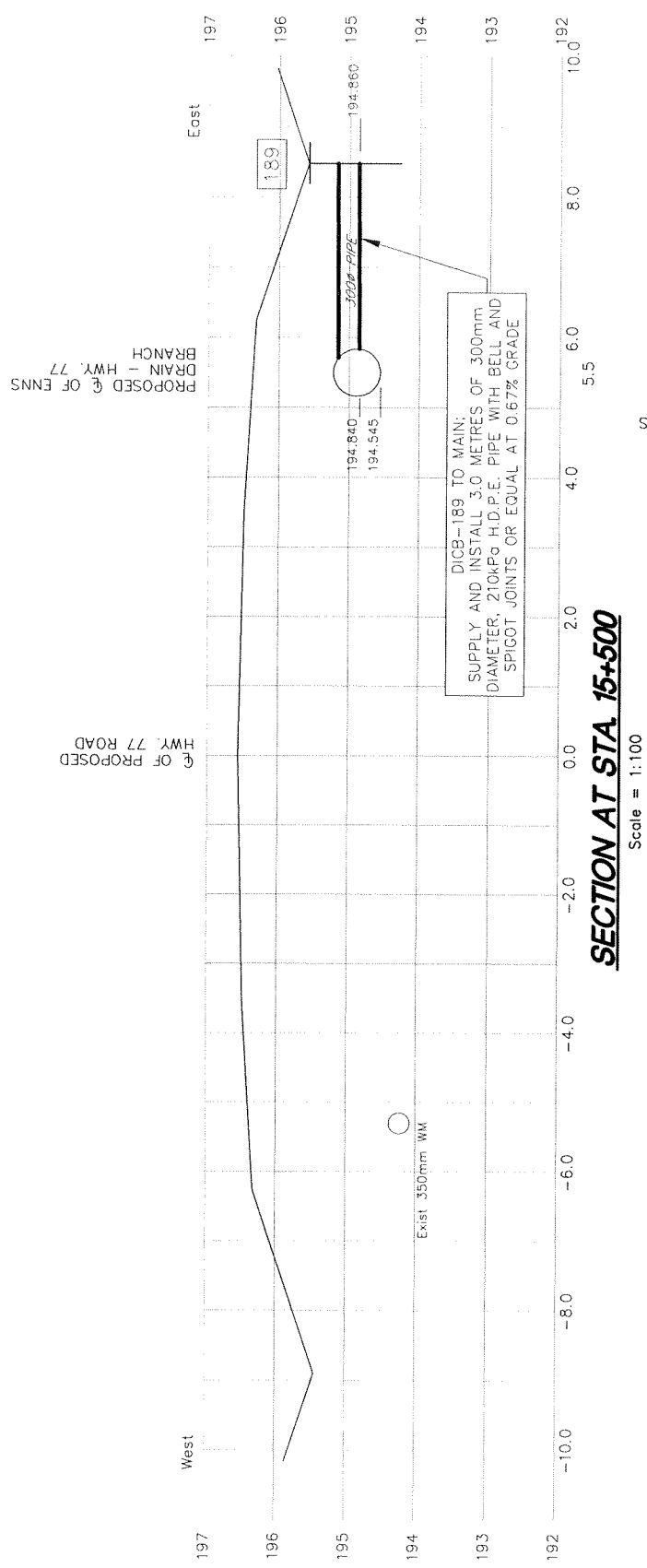


METRIC
DIMENSIONS ARE IN METRES
AND/OR MILLIMETRES
UNLESS OTHERWISE SHOWN

PLATE No
DRAWING No
CONT No 2008-3007
WP No 139-98-00

CROSS SECTIONS

SHEET
XX



15+625.00

PHILIPS ENGINEERING

METRIC
DIMENSIONS ARE IN METRES
AND/OR MILLIMETRES
UNLESS OTHERWISE SHOWN

PLATE No
DRAWING No
CONT No 2008-3007
WP No 139-98-00

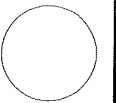
CROSS SECTIONS

SHEET XX

METRIC
 DIMENSIONS ARE IN METRES
 AND/OR MILLIMETRES
 UNLESS OTHERWISE SHOWN



PLATE No
 DRAWING No
 CONT No 2008-3007
 WP No 139-98-00



CROSS SECTIONS

SHEET
 XX

TABLE OF STRUCTURES

STRUCTURE NUMBER	STATION	OPSD STRUCTURE	STRUCTURE SIZE	OPSD GRATE	SLOPE OF GRATE	TOP OF GRATE ELEVATION	DEPTH OF STRUCTURE
172	14+986	701.011	1500mm	401.010	FLAT	197.020	1.7m
173	15+025	705.030	600mm	403.010	3:1	196.150	1.0m
174	15+075	705.030	600mm	403.010	3:1	196.240	1.0m
175	15+075	701.011	1500mm	401.010	FLAT	197.150	1.8m
176	15+075	705.030	600mm	403.010	3:1	196.160	1.0m
177	15+130	701.011	1500mm	401.010	FLAT	197.070	1.8m
178	15+150	705.030	600mm	403.010	3:1	196.190	1.0m
179	15+230	705.030	600mm	403.010	3:1	195.930	1.0m
180	15+230	701.011	1500mm	401.010	FLAT	196.930	1.8m
181	15+271	705.030	600mm	403.010	3:1	195.930	1.0m
182	15+300	705.030	600mm	403.010	3:1	195.750	1.0m
183	15+350	705.030	600mm	403.010	3:1	195.820	1.1m
184	15+350	701.012	1800mm	401.010	FLAT	196.890	2.2m
185	15+375	705.030	600mm	403.010	3:1	195.790	1.2m
186	15+425	705.030	600mm	403.010	3:1	195.880	1.2m
187	15+425	701.012	1800mm	401.010	FLAT	196.710	2.2m
188	15+433	705.030	600mm	403.010	3:1	195.700	1.2m
189	15+500	705.030	600mm	403.010	3:1	195.570	1.3m
190	15+575	705.030	600mm	403.010	3:1	194.930	1.0m
191	15+575	701.012	1800mm	401.010	FLAT	195.820	1.8m
192	15+608	705.030	600mm	403.010	3:1	194.750	1.0m
193	15+617	705.030	600mm	403.010	3:1	195.020	1.1m
194	15+630	701.012	1800mm	401.010	FLAT	195.730	1.9m