

PLANS, PROFILE & SECTIONS

OF THE

4TH CONCESSION ROAD DRAIN RELOCATION

(For Domenic & Rima Mastronardi (650-08320), Part of Lot 6, Concession 3)
(Geographic Township of Mersea)

IN THE
MUNICIPALITY OF LEAMINGTON
IN THE
COUNTY OF ESSEX • ONTARIO

Gerard Road
GERARD ROAD, P. ENG.



N. J. PERALTA ENGINEERING LTD.

45 DIVISION STREET NORTH
KINGSHILL, ONTARIO
N9Y 1E1

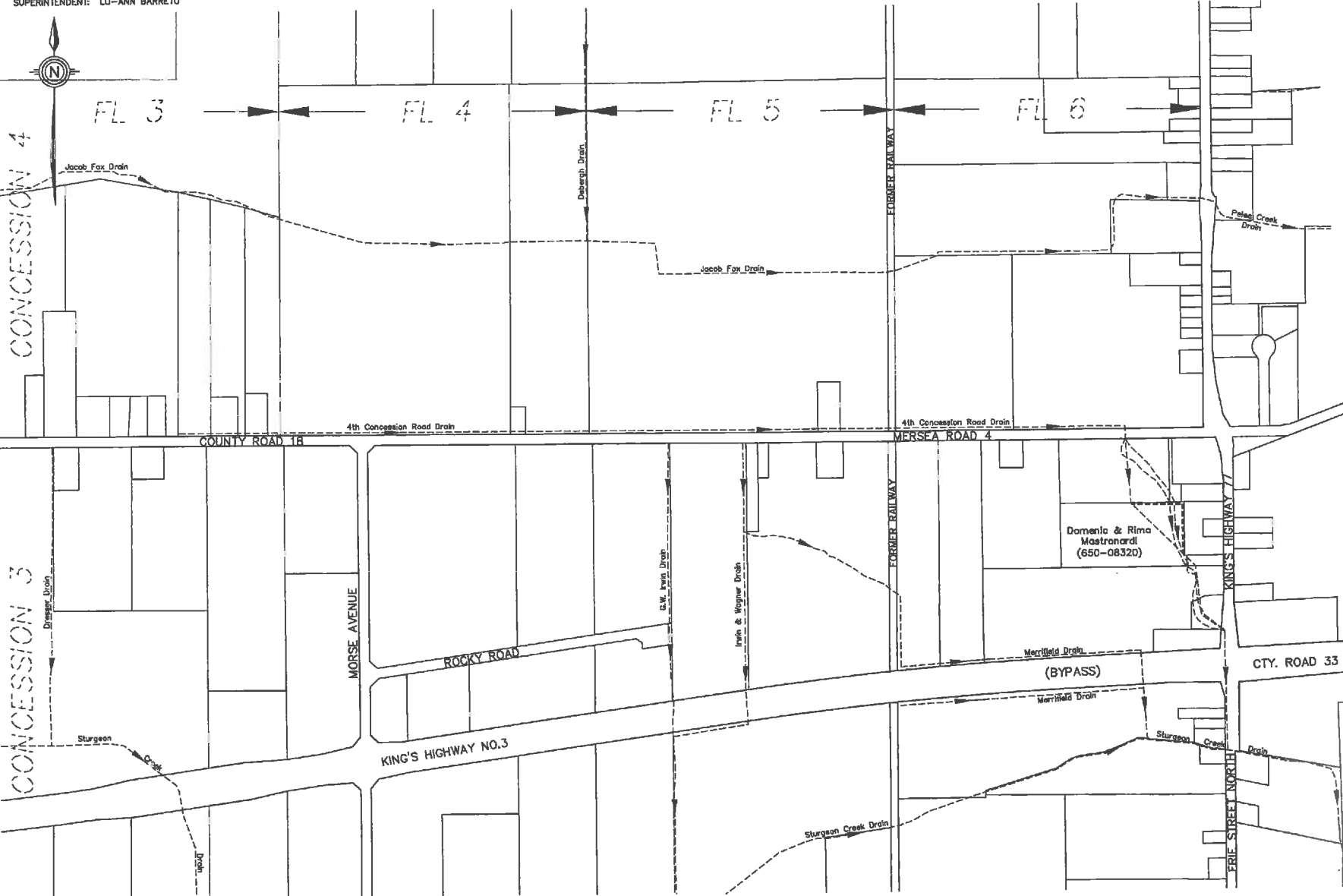
DATE: JULY 16th, 2010

MUNICIPALITY OF LEAMINGTON

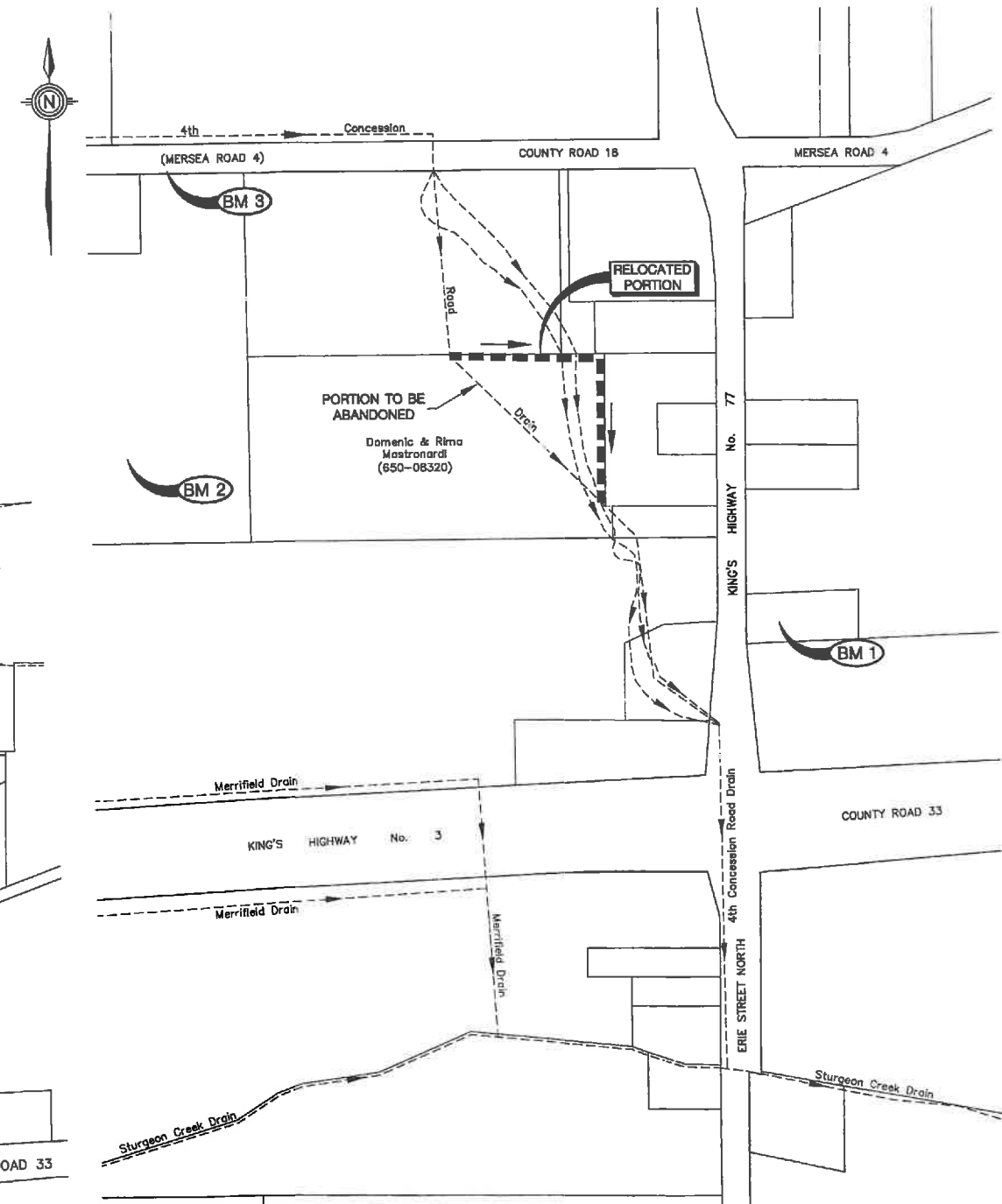
MAYOR: JOHN ADAMS
CLERK: BRIAN SWEET
DRAINAGE SUPERINTENDENT: LU-ANN BARRETO

BENCHMARKS:

1. NORTHWEST CORNER OF THE FIRST CONCRETE STEP ON THE 1-1/2 STORY FRAME HOUSE NAL 354 ON THE EAST SIDE OF KING'S HIGHWAY No. 77. **ELEV. 190.012m**
2. TOP OF CONCRETE WELL LOCATED ON THE HANSEN PROPERTY (MN.814), SOUTH OF THE EXISTING GREENHOUSES, APPROXIMATELY 84m NORTH OF THE PROPOSED PHASE 3 GREENHOUSES. **ELEV. 190.807m**
3. TOP OF NAIL SET IN SOUTH FACE OF HYDRO POLE ON THE SOUTH SIDE OF COUNTY ROAD 18, AT MN 814. **ELEV. 191.392m**



KEY PLAN
Scale = 1:5,000



PLAN
Scale = 1:2,000

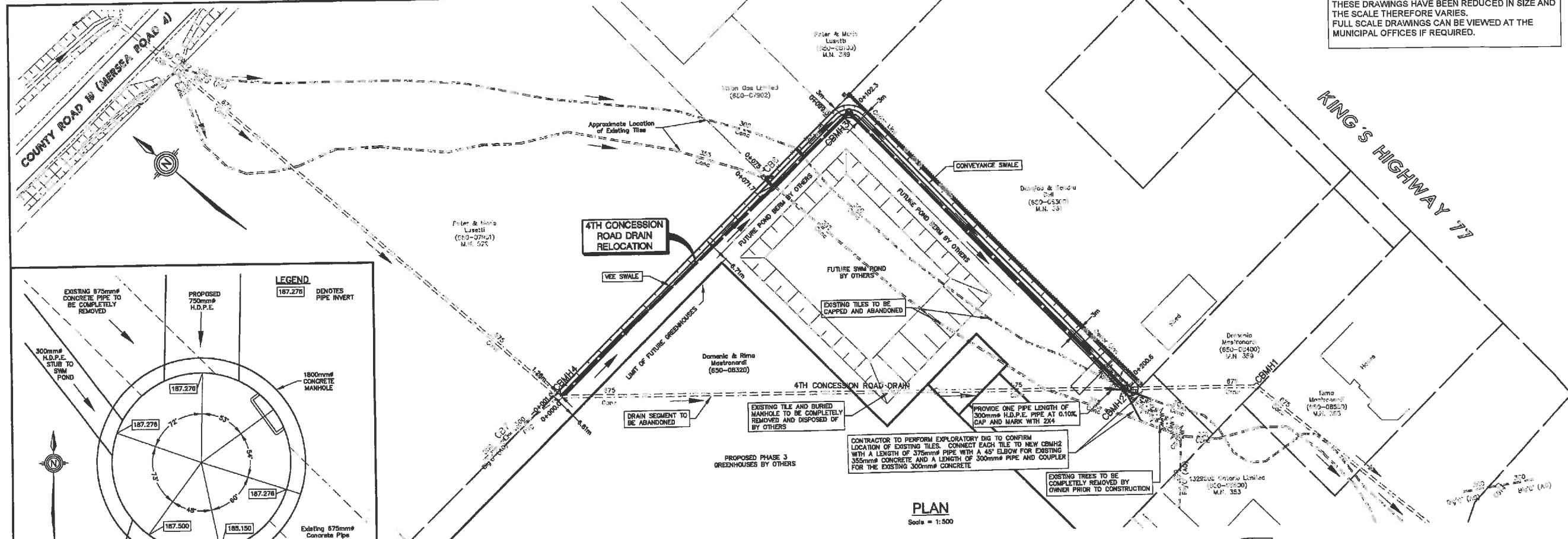
THESE DRAWINGS HAVE BEEN REDUCED IN SIZE AND THE SCALE THEREFORE VARIES. FULL SCALE DRAWINGS CAN BE VIEWED AT THE MUNICIPAL OFFICES IF REQUIRED.

DRAWN BY: H.C.H./M.V.
PLOT CODE: 1:1
COMPUTER FILE: D1000551.dwg
FILE No.: D10-005 (E07-008)
SHEET No.: 1 OF 3

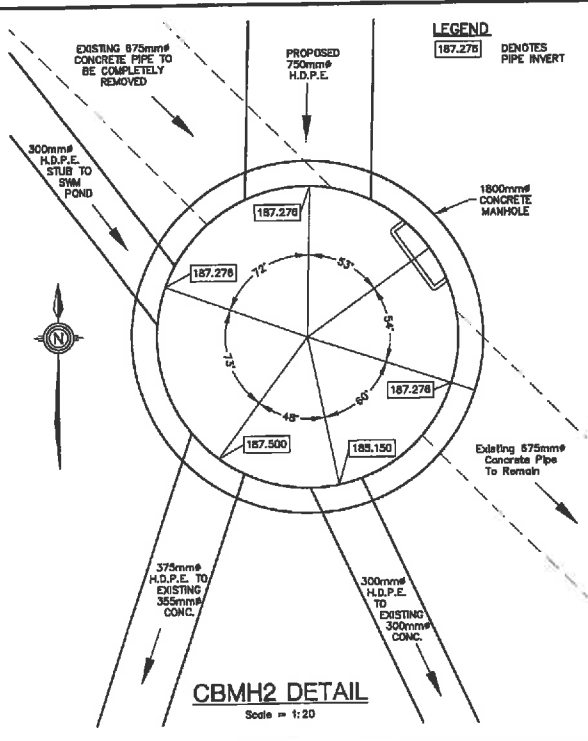
\\lan2a\view\4\projects\lan\proj\192\CD7008\view\1100051.dwg 2010-07-21 8:08:48 AM EDT

THESE DRAWINGS HAVE BEEN REDUCED IN SIZE AND THE SCALE THEREFORE VARIES. FULL SCALE DRAWINGS CAN BE VIEWED AT THE MUNICIPAL OFFICES IF REQUIRED.

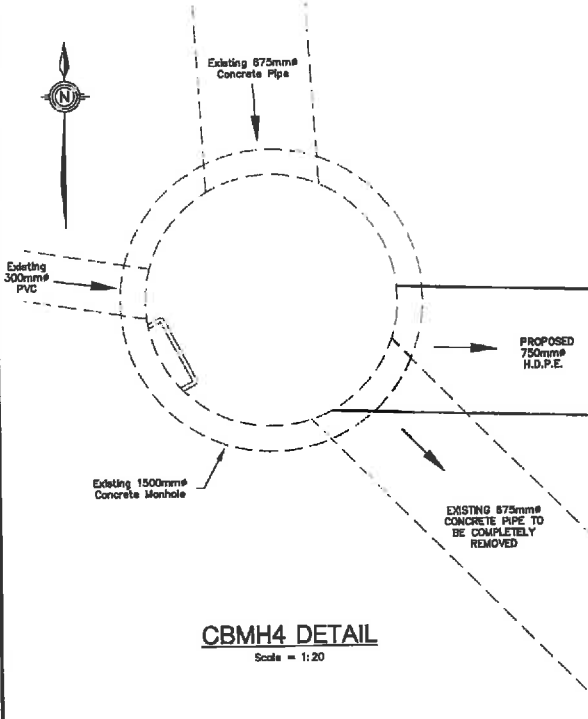
- NOTES:**
1. THE ACCURACY OF THE UTILITIES SHOWN ON THESE DRAWINGS ARE NOT GUARANTEED BY THE ENGINEER OR N.J. PERALTA ENGINEERING LTD. OTHER UTILITIES MAY BE PRESENT OR THE UTILITIES SHOWN MAY VARY IN SIZE OR LOCATION SHOWN.
 2. ALL ELEVATIONS SHOWN IN METERS.
 3. LOCATION OF EXISTING COVERED DRAIN IS APPROXIMATE BASED ON OLD PLANS.



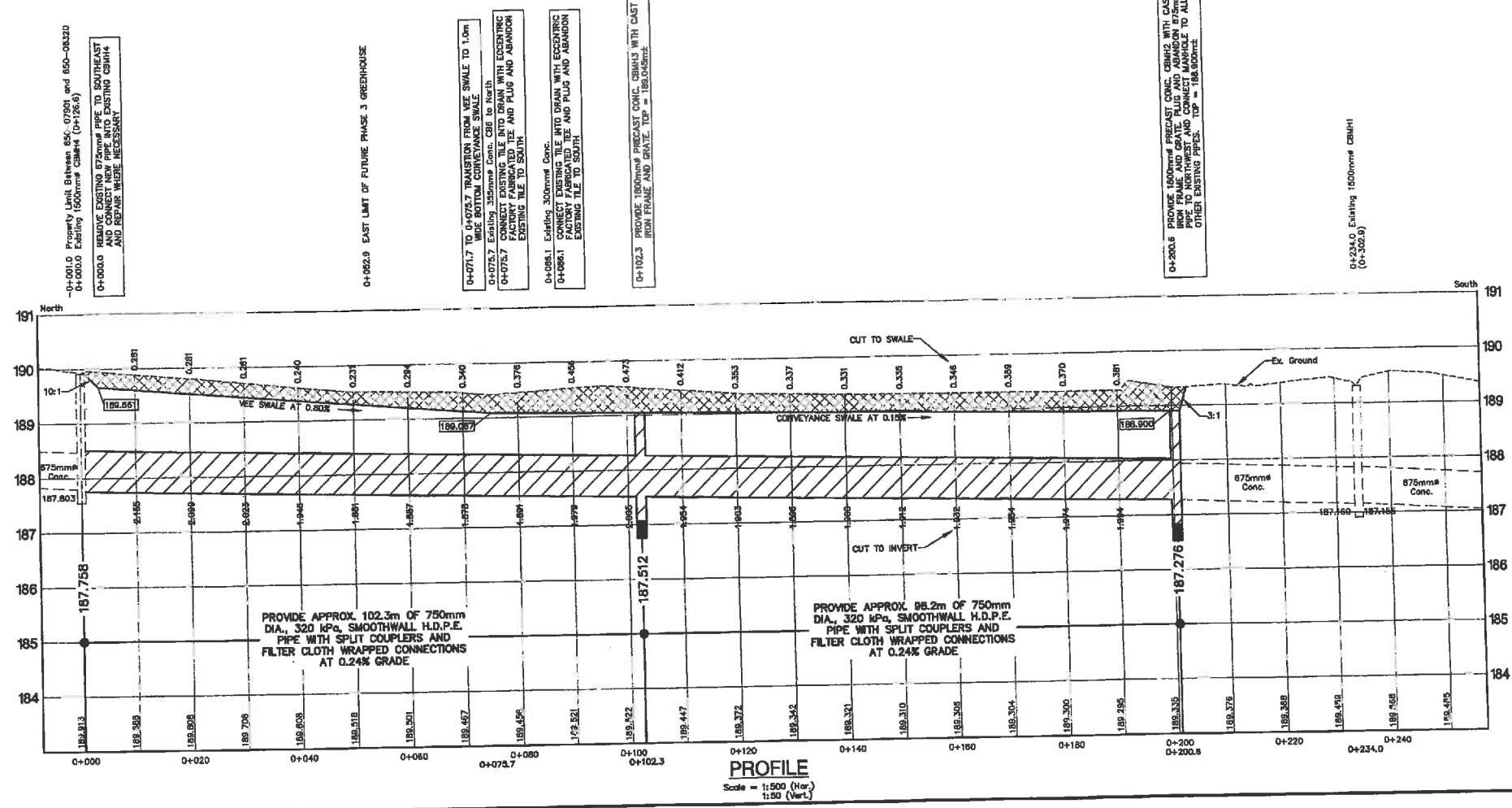
PLAN
Scale = 1:500



CBM2 DETAIL
Scale = 1:20



CBM4 DETAIL
Scale = 1:20



PROFILE
Scale = 1:500 (Hor.)
1:50 (Ver.)

- BENCHMARKS:**
1. NORTHWEST CORNER OF THE FIRST CONCRETE STEP ON THE 1-1/2" BERRY FRAME HOUSE NO. 77. ELEV. 190.012m
 2. TOP OF CONCRETE WALL LOCATED ON THE MASTRONARDO PROPERTY (M.A.10), SOUTH OF THE EXISTING GREENHOUSES, APPROXIMATELY 50m NORTH OF THE PROPOSED PHASE 3 GREENHOUSES. ELEV. 190.807m
 3. TOP OF NAIL SET IN SOUTH FACE OF HYDRO POLE ON THE SOUTH SIDE OF COUNTY ROAD 16, AT 0+174. ELEV. 191.392m

ISSUED FOR	BY	DATE

N. J. Peralta Engineering Ltd.
Consulting Engineers
Kingville Ontario

4th CONCESSION ROAD DRAIN RELOCATION
(FOR DOMENICO MASTRONARDO)
MUNICIPALITY OF LEAMINGTON, ONTARIO

SHEET TITLE	
PLAN AND PROFILE AND CBM DETAILS	
DESIGNED BY	DATE
H.C.M.	JULY 16, 2010
DRAWN BY	SCALE
H.C.M./M.V.	1:500
SHEET No.	OF
2	3
PROJECT No.	
D10-005 (ED7-008)	

\\shimizu\share\4_projects\leamington\ed7\005\plan\10000501.dwg 2010-07-21 8:08:49 AM EDT

