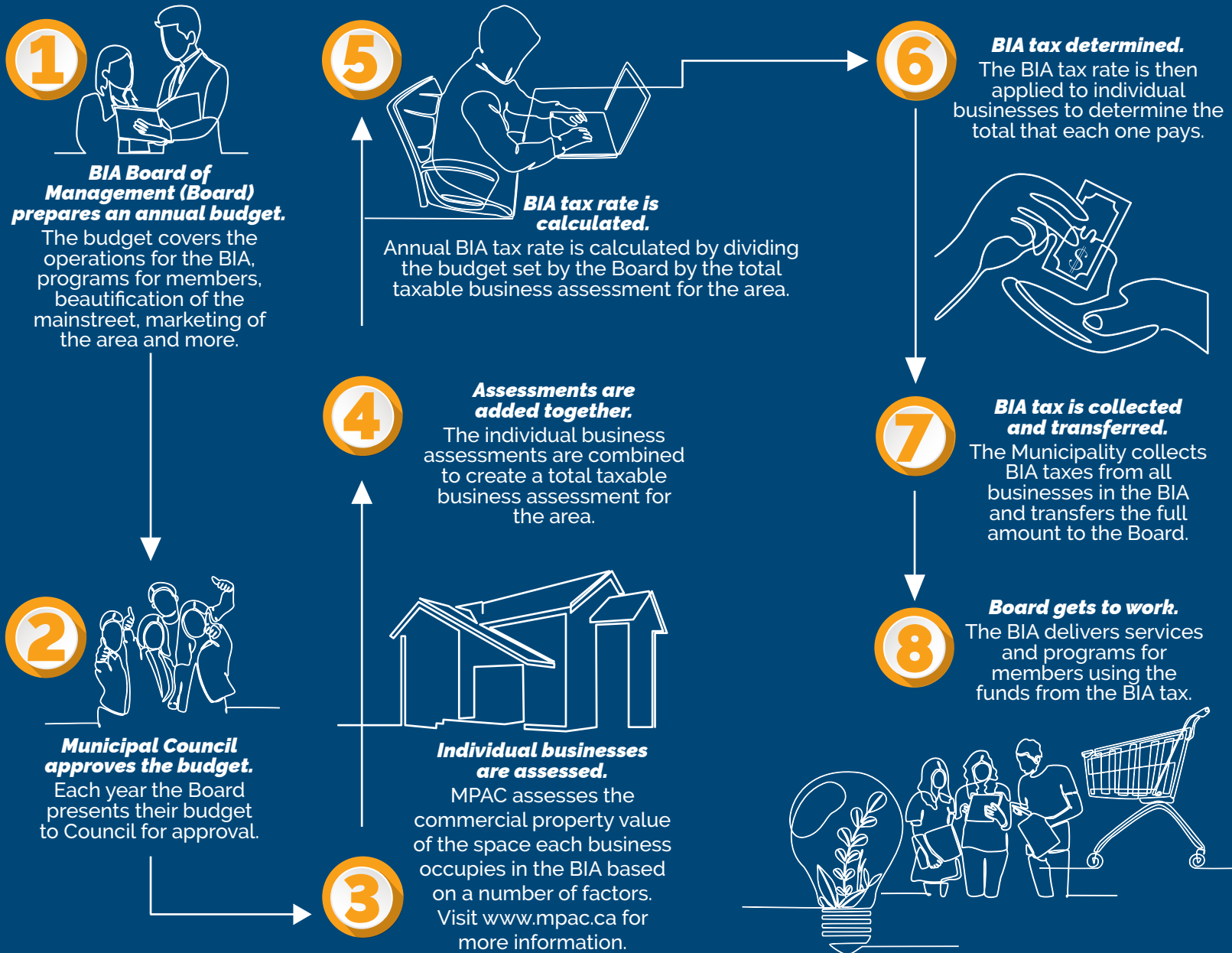


A step-by-step guide to the Business Improvement Area (BIA)

Tax Process



Municipality of
Leamington
live | play | work



Example

Bob's Pizza is located in a BIA



Calculating BIA tax rate

BIA annual budget		Total taxable business area
\$200,000	$\frac{\circ}{\circ}$	\$10M
= 2%		
BIA tax rate		

Calculating individual business assessment

Bob's Pizza

business operation area:		net annual rental rate:
2500 ft ²	X	\$10 ft ²
= \$25,000		

Calculating the BIA tax

Bob's business assessment		BIA tax rate
\$25,000	X	2%
= \$500		

Bob's Pizza owes \$500 in BIA taxes