

APPENDIX "E"

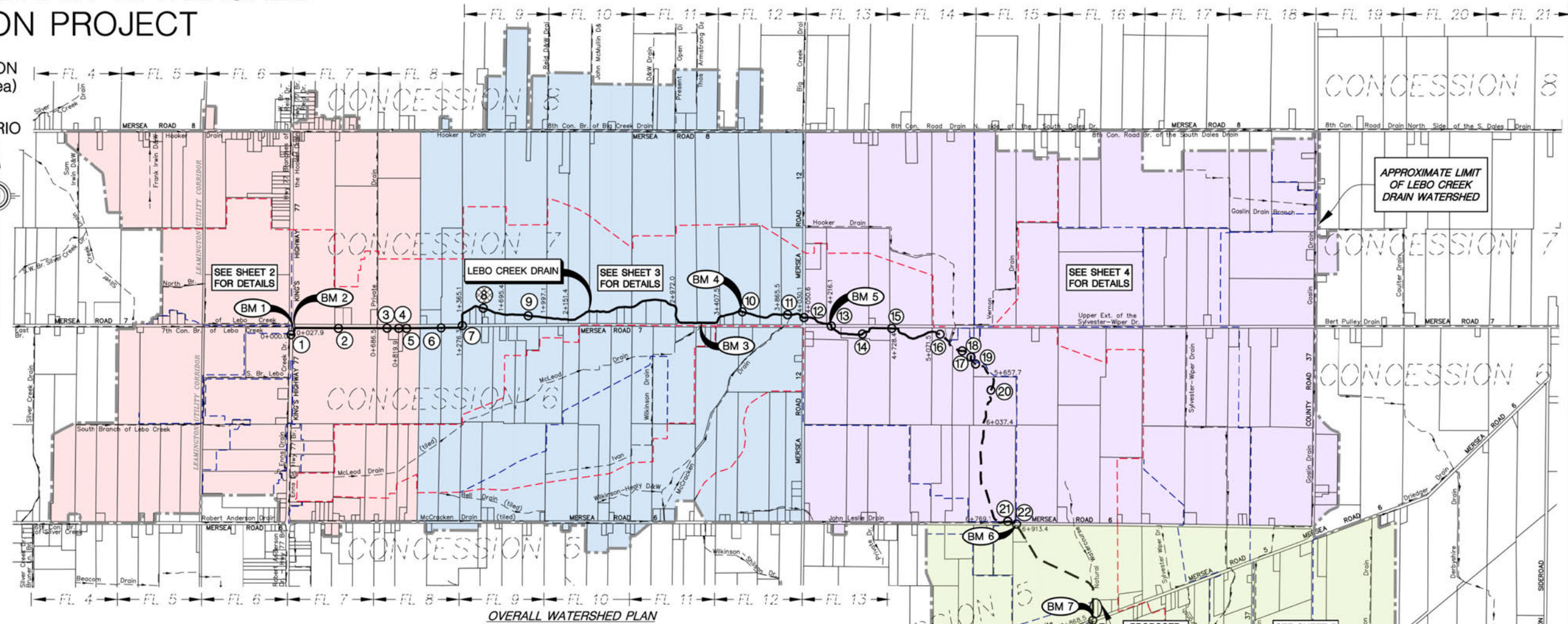
This page has been intentionally left blank

LEBO CREEK DRAIN WATERSHED REHABILITATION PROJECT

IN THE
MUNICIPALITY OF LEAMINGTON
(Geographic Township of Mersea)
IN THE
COUNTY OF ESSEX • ONTARIO

MUNICIPALITY OF LEAMINGTON
MAYOR: HILDA MacDONALD
CLERK: RUTH ORTON
DRAINAGE SUPERINTENDENT: LU-ANN MARENETTE

Peralta Engineering
N.J. Peralta Engineering Ltd.
Consulting Engineers
45 Division Street North
Kingsville, ON
N9Y 1E1 Canada
P: 519-733-6587
F: 519-733-6588
peraltaengineering.com



OVERALL WATERSHED PLAN
Scale = 1:115,000

SHEET INDEX	
SHT. No.	DESCRIPTION
1	COVER AND OVERALL WATERSHED PLAN
WATERSHED PLAN & DETAILS	
2	WATERSHED PLAN DETAILS & PARCEL INFORMATION
3	WATERSHED PLAN DETAILS & PARCEL INFORMATION
4	WATERSHED PLAN DETAILS & PARCEL INFORMATION
5	WATERSHED PLAN DETAILS & PARCEL INFORMATION
PROFILE & DETAILS	
6	LEBO CREEK DRAIN PROFILE - (STA. 4+030.1 TO STA. 13+212.1)
7	REPAIR DETAILS
CROSS SECTIONS	
8	CROSS SECTIONS
9	CROSS SECTIONS
10	CROSS SECTIONS
11	IMPROVEMENTS DETAILS
WETLAND PLANS	
W1	WETLAND PLAN & PROFILE
W2	WETLAND CROSS SECTIONS & DETAILS
PROJECT NO. D15-029	

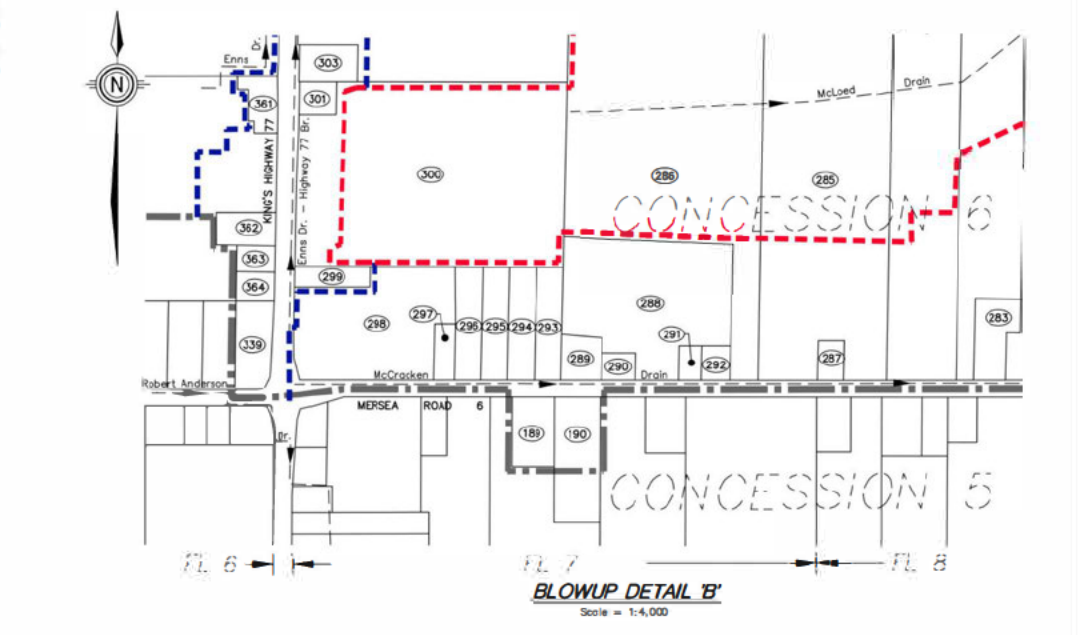
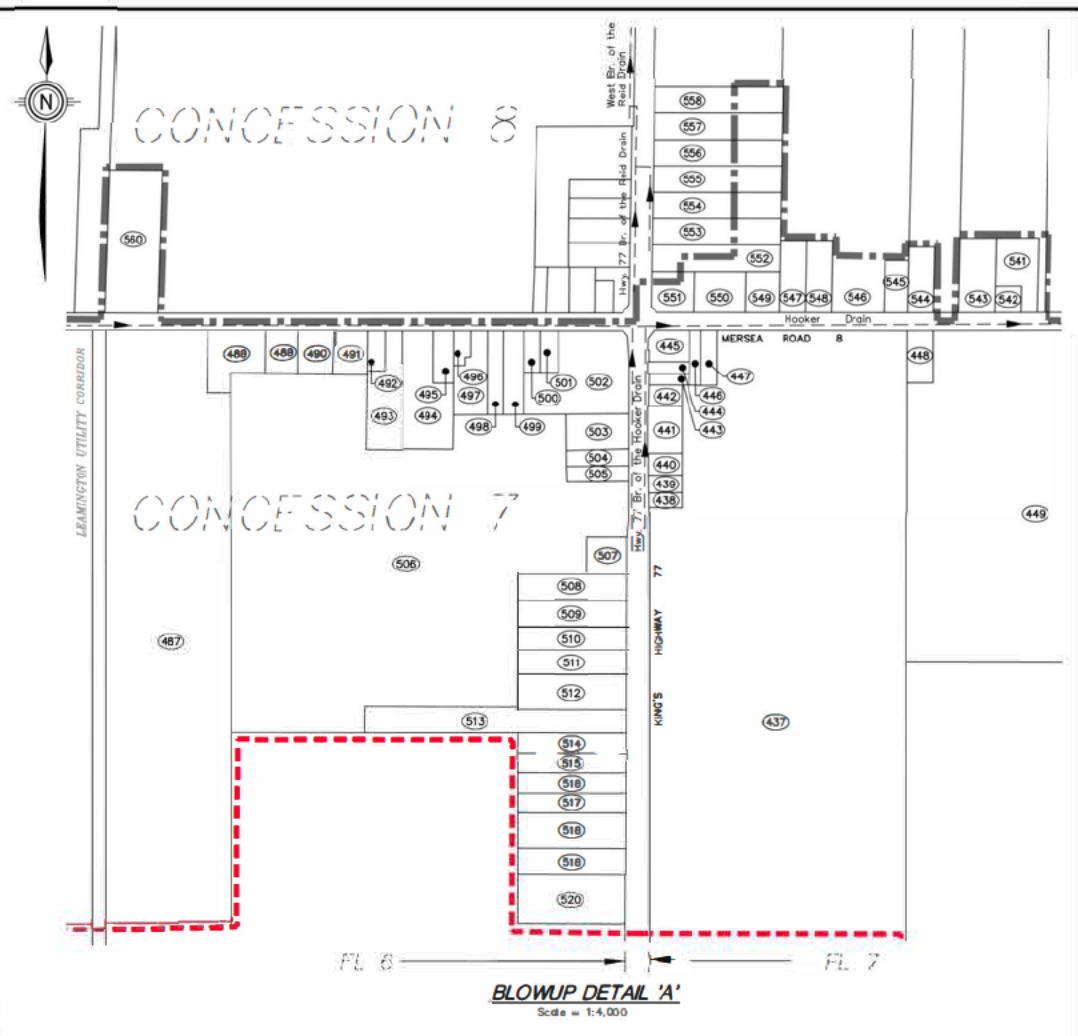
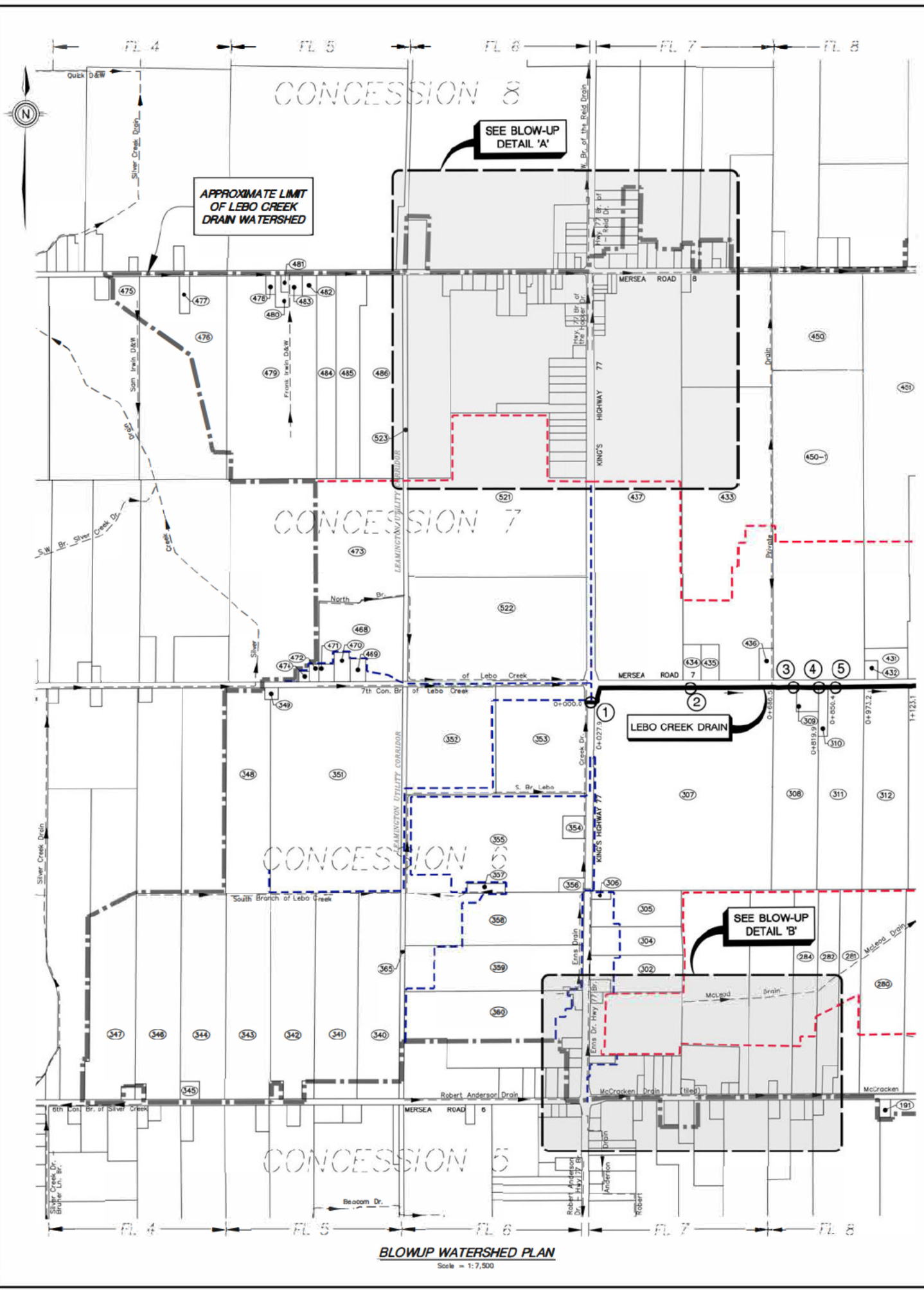
- LEGEND**
- DENOTES EXISTING MUNICIPAL DRAIN PORTION
 - - - DENOTES EXISTING NATURAL WATERCOURSE PORTION (TO BE CONVERTED TO MUNICIPAL DRAIN)
 - DENOTES OVERALL WATERSHED LIMITS
 - - - DENOTES TRIBUTARY WATERSHED LIMITS
 - - - DENOTES SUB-TRIBUTARY WATERSHED LIMITS
 - ⊙ DENOTES BRIDGE NUMBER AND LOCATION
 - ⊙ DENOTES BRIDGE TO BE REMOVED AND ABANDONED

- BENCHMARKS:**
- TOP CENTRELINE OF EAST CURB OF CONCRETE BRIDGE NO. 1 LOCATED APPROXIMATELY 66.0m SOUTH OF INTERSECTION OF KING'S HIGHWAY NO. 77 AND MERSEA ROAD 7.
ELEV. = 194.913m
 - TOP NUT OF FIRE HYDRANT LOCATED AT THE SOUTHEAST CORNER OF THE INTERSECTION OF KING'S HIGHWAY NO. 77 AND MERSEA ROAD 7.
ELEV. = 195.785m
 - TOP CENTRELINE OF NORTH CONCRETE CURB OVER THE MERSEA ROAD 7 ROAD CROSSING FRONTING MN 1132.
ELEV. = 191.112m
 - TOP CENTRELINE OF WEST CONCRETE CURB OF BRIDGE NO. 10 WITHIN PROPERTY MN 1211, MERSEA ROAD 7.
ELEV. = 190.256m
 - TOP CENTRELINE OF WEST CONCRETE CURB OF BRIDGE NO. 12 APPROX. 60.0m NORTH OF INTERSECTION AT MERSEA ROAD 12 AND MERSEA ROAD 7.
ELEV. = 190.405m
 - TOP WEST END OF NORTH WALL OF BRIDGE NO. 13 APPROX. 190.0m EAST OF MERSEA ROAD 12 AND MERSEA ROAD 7 INTERSECTION.
ELEV. = 189.900m
 - TOP WEST END OF SOUTH CURB OF BRIDGE NO. 22 OVER MERSEA ROAD 6.
ELEV. = 184.697m
 - TOP EAST END OF NORTH CURB OF BRIDGE NO. 23 OVER MERSEA ROAD 5.
ELEV. = 183.336m
 - TOP CENTRELINE OF NORTH CURB OF BRIDGE NO. 26 OVER COUNTY ROAD 34.
ELEV. = 180.565m
 - TOP WEST END OF THE SOUTH CURB OF BRIDGE NO. 32 OVER THE LEBO CREEK DRAIN ON DEER RUN ROAD.
ELEV. = 177.399m



THESE DRAWINGS HAVE BEEN REDUCED IN SIZE AND THE SCALE THEREFORE VARIES. FULL SCALE DRAWINGS CAN BE VIEWED AT THE MUNICIPAL OFFICES IF REQUIRED.

Parcel ID	Owner Name
189	
190	
282	
283	
284	
285	
286	
287	
288	
289	
290	
291	
292	
293	
294	
295	
296	
297	
298	
299	
300	
301	
302	
303	
304	
305	
306	
307	
308	
309	
310	
311	
339	
340	
341	
342	
343	
344	
345	
346	
347	
348	
349	
351	
352	
353	
354	
355	
356	
357	
358	
359	
360	
361	
362	
363	
364	
365	
433	
434	
435	
436	
437	
438	
439	
440	
441	
442	
443	
444	
445	
446	
447	
448	
449	
450	
451	
452	
453	
454	
455	
456	
457	
458	
459	
460	
461	
462	
463	
464	
465	
466	
467	
468	
469	
470	
471	
472	
473	
474	
475	
476	
477	
478	
479	
480	
481	
482	
483	
484	
485	
486	
487	
488	
489	
490	
491	
492	
493	
494	
495	
496	
497	
498	
499	
500	
501	
502	
503	
504	
505	
506	
507	
508	
509	
510	
511	
512	
513	
514	
515	
516	
517	
518	
519	
520	
521	
522	
523	
524	
525	
526	
527	
528	
529	
530	
531	
532	
533	
534	
535	
536	
537	
538	
539	
540	
541	
542	
543	
544	
545	
546	
547	
548	
549	
550	
551	
552	
553	
554	
555	
556	
557	
558	
559	
560	



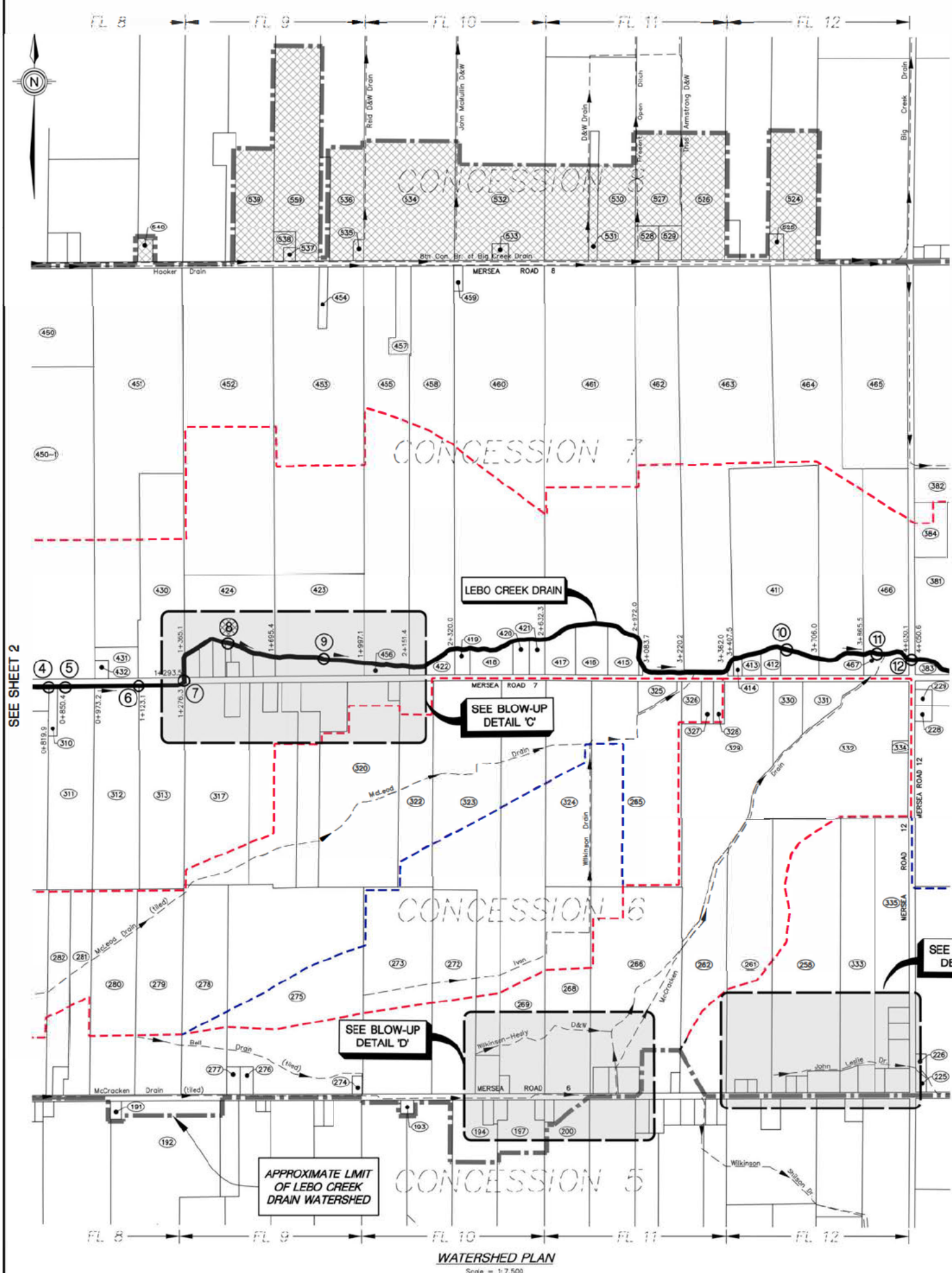
THESE DRAWINGS HAVE BEEN REDUCED IN SIZE AND THE SCALE THEREFORE VARIES. FULL SCALE DRAWINGS CAN BE VIEWED AT THE MUNICIPAL OFFICES IF REQUIRED.

LEGEND

- DENOTES OVERALL WATERSHED LIMITS
- - - DENOTES TRIBUTARY WATERSHED LIMITS
- - - DENOTES SUB-TRIBUTARY WATERSHED LIMITS
- XX - DENOTES BRIDGE IDENTIFICATION NUMBER AND LOCATION
- XXX - DENOTES PARCEL ID# NUMBER

		Peralta Engineering Consulting Engineers N.J. Peralta Engineering Ltd. 45 Division Street North Kitchener, ON N2Y 1E1, Canada peraltaengineering.com	
DATE: APR 28, 2023	DESIGNED BY: A.B.P.	DRAWN BY: K.D.S./M.J.S.	CHECKED BY: A.B.P.
PROJECT No: D15-029	SHEET No: 2 OF 11		

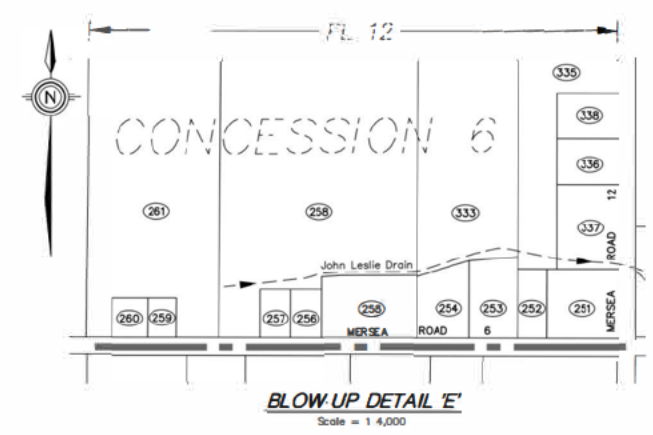
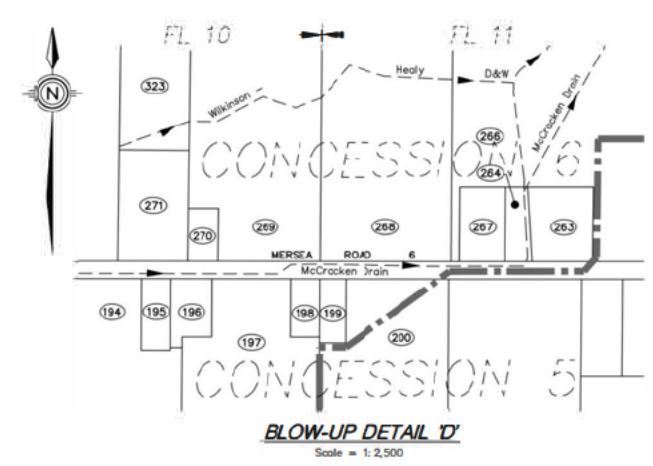
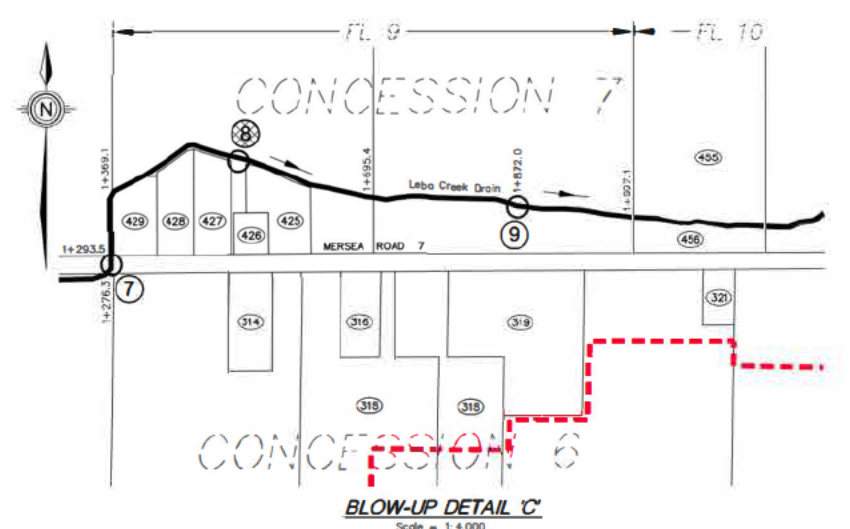
Parcel ID	Owner Name
191	
192	
193	
194	
195	
196	
197	
198	
199	
200	
251	
252	
253	
254	
255	
256	
257	
258	
259	
260	
261	
262	
263	
264	
265	
266	
267	
268	
269	
270	
271	
272	
273	
274	
275	
276	
277	
278	
279	
280	
281	
312	
313	
314	
315	
316	
317	
318	
319	
320	
321	
322	
323	
324	
325	
326	
327	
328	
329	
330	
331	
332	
333	
334	
335	
336	
337	
338	
411	
412	
413	
414	
415	
416	
417	
418	
419	
420	
421	
422	
423	
424	
425	
426	
427	
428	
429	
430	
431	
432	
433	
434	
435	
436	
437	
438	
439	
440	
441	
442	
443	
444	
445	
446	
447	
448	
449	
450	
451	
452	
453	
454	
455	
456	
457	
458	
459	
460	
461	
462	
463	
464	
465	
466	
467	
468	
469	
470	
471	
472	
473	
474	
475	
476	
477	
478	
479	
480	
481	
482	
483	
484	
485	
486	
487	
488	
489	
490	
491	
492	
493	
494	
495	



SEE SHEET 2

SEE SHEET 4

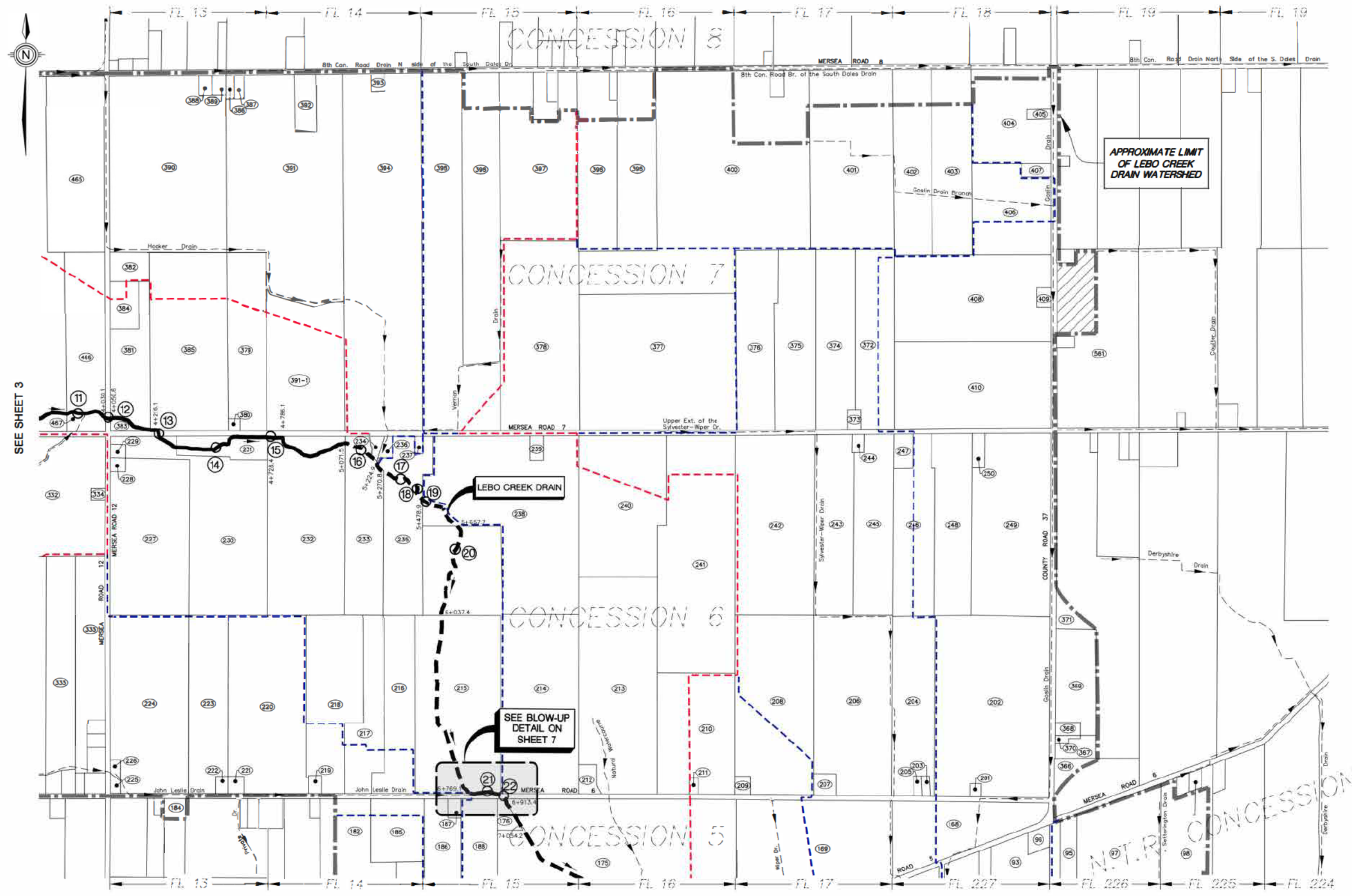
- LEGEND**
- DENOTES OVERALL WATERSHED LIMITS
 - - - DENOTES TRIBUTARY WATERSHED LIMITS
 - - - DENOTES SUB-TRIBUTARY WATERSHED LIMITS
 - ▨ DENOTES TILE DRAINAGE ONLY
 - XX DENOTES BRIDGE IDENTIFICATION NUMBER AND LOCATION
 - ⊗ DENOTES BRIDGE TO BE REMOVED AND ABANDONED
 - XXX DENOTES PARCEL ID# NUMBER



THESE DRAWINGS HAVE BEEN REDUCED IN SIZE AND THE SCALE THEREFORE VARIES. FULL SCALE DRAWINGS CAN BE VIEWED AT THE MUNICIPAL OFFICES IF REQUIRED.

	Peralta Engineering N.J. Peralta Engineering Ltd. Consulting Engineers 45 Division Street North Kingville, ON M9Y 1E1, Canada pengineer@peraltaengineering.com	
	DATE: APR 28, 2023 DESIGNED BY: A.B.P. DRAWN BY: K.S./M.J.S. CHECKED BY: A.B.P.	PROJECT No.: D15-029 SHEET No.: 3 OF 11

Parcel ID	Owner Name
184	
201	
202	
203	
204	
205	
208	
207	
208	
209	
210	
211	
212	
213	
214	
215	
216	
217	
219	
220	
221	
222	
223	
224	
225	
226	
227	
228	
229	
230	
231	
232	
233	
234	
235	
236	
237	
238	
239	
240	
241	
242	
243	
244	
245	
246	
247	
248	
249	
250	
251	
252	
253	
254	
255	
256	
257	
258	
259	
260	
261	
262	
263	
264	
265	
266	
267	
268	
269	
270	
271	
272	
273	
274	
275	
276	
277	
278	
279	
280	
281	
282	
283	
284	
285	
286	
287	
288	
289	
290	
291	
292	
293	
294	
295	
296	
297	
298	
299	
300	
301	
302	
303	
304	
305	
306	
307	
308	
309	
310	
311	
312	
313	
314	
315	
316	
317	
318	
319	
320	
321	
322	
323	
324	
325	
326	
327	
328	
329	
330	
331	
332	
333	
334	
335	
336	
337	
338	
339	
340	
341	
342	
343	
344	
345	
346	
347	
348	
349	
350	
351	

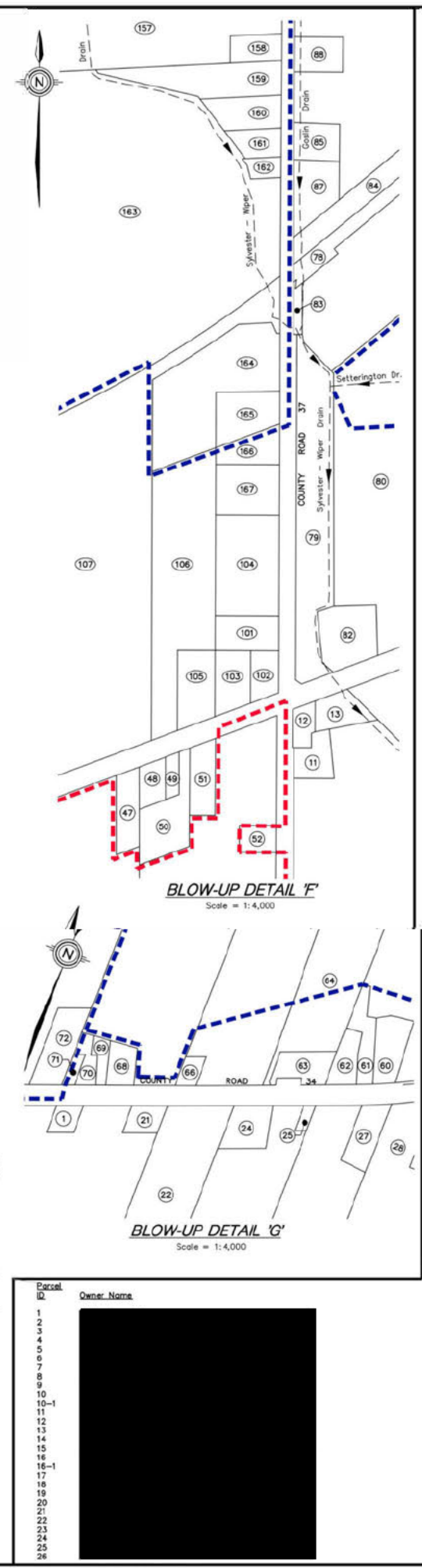
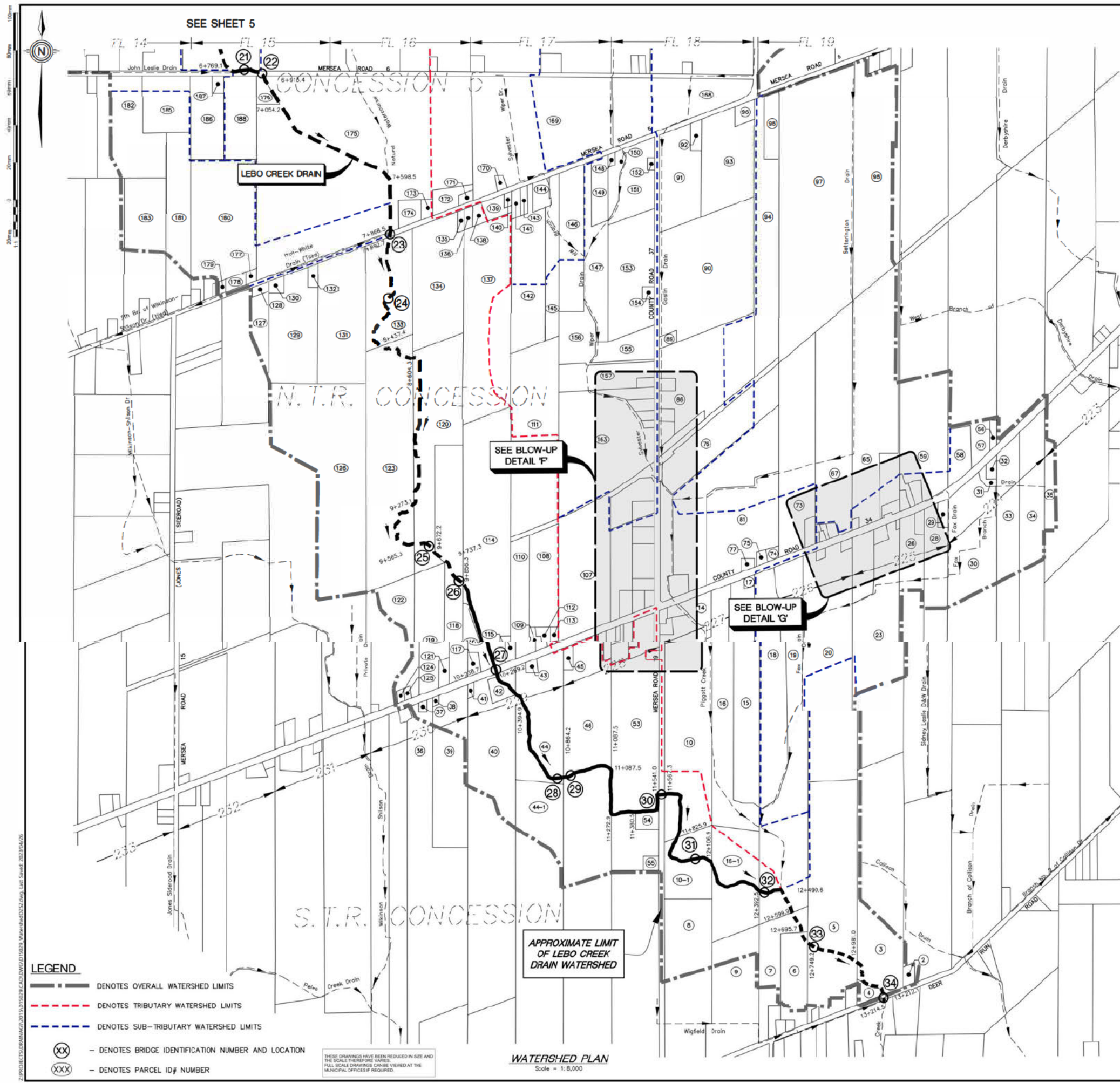


SEE SHEET 5 **WATERSHED PLAN**
Scale = 1:7,500

- LEGEND**
- DENOTES OVERALL WATERSHED LIMITS
 - - - - - DENOTES TRIBUTARY WATERSHED LIMITS
 - - - - - DENOTES SUB-TRIBUTARY WATERSHED LIMITS
 - DENOTES NATURAL WATERCOURSE PORTION OF THE LEBO CREEK
 - ▨ DENOTES SURFACE RUNOFF ONLY
 - XX - DENOTES BRIDGE IDENTIFICATION NUMBER AND LOCATION
 - XXX - DENOTES PARCEL ID# NUMBER

THESE DRAWINGS HAVE BEEN REDUCED IN SIZE AND THE SCALE THEREFORE VARIES. FULL SCALE DRAWINGS CAN BE VIEWED AT THE MUNICIPAL OFFICES IF REQUIRED.

	Peralta Engineering N. J. Peralta Engineering Ltd. Consulting Engineers 45 Division Street North Kingville, ON M9Y 1E1, Canada peraltaengineering.com	
	DATE: APR 28, 2023 DESIGNED BY: A.B.P. DRAWN BY: K.D.S./M.J.S. CHECKED BY: A.B.P.	PROJECT No.: D15-029 SHEET No.: 4 OF 11



Parcel ID	Owner Name
1	
2	
3	
4	
5	
6	
7	
8	
9	
10	
10-1	
11	
12	
13	
14	
15	
16	
16-1	
17	
18	
19	
20	
21	
22	
23	
24	
25	
26	

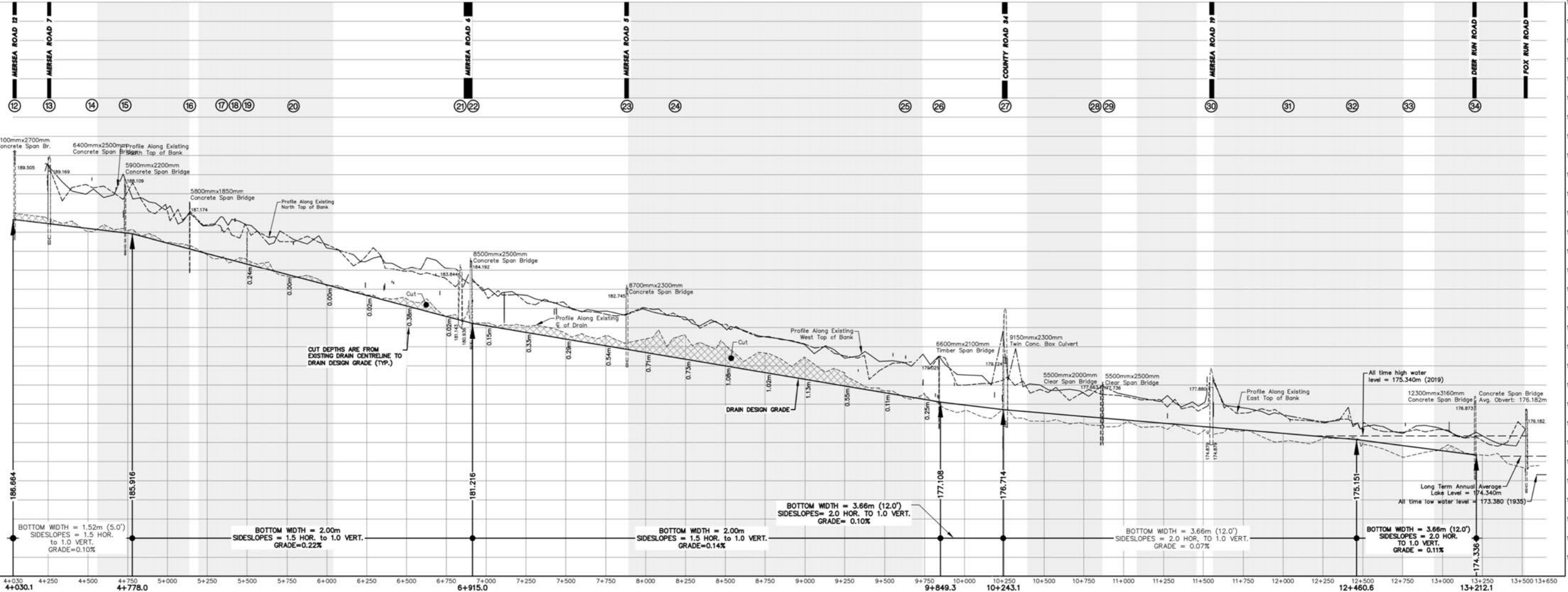
Parcel ID: 27, 28, 29, 30, 31, 32, 33, 34, 35, 36, 37, 38, 39, 40, 41, 42, 43, 44, 45, 46, 47, 48, 49, 50, 51, 52, 53, 54, 55, 56, 57, 58, 59, 60, 61, 62, 63, 64, 65, 66, 67, 68, 69, 70, 71, 72, 73, 74, 75, 76, 77, 78, 79, 80, 81, 82, 83, 84, 85, 86, 87, 88, 89, 90, 91, 92, 93, 94, 95, 96, 97, 98, 99, 100, 101, 102, 103, 104, 105, 106, 107, 108, 109, 110, 111, 112, 113, 114, 115, 116, 117, 118, 119, 120, 121, 122, 123, 124, 125, 126, 127, 128, 129, 130, 131, 132, 133, 134, 135, 136, 137, 138, 139, 140, 141, 142, 143, 144, 145, 146, 147, 148, 149, 150, 151, 152, 153, 154, 155, 156, 157, 158, 159, 160, 161, 162, 163, 164, 165, 166, 167, 168, 169, 170, 171, 172, 173, 174, 175, 176, 177, 178, 179, 180, 181, 182, 183, 184, 185, 186, 187, 188

APR 28, 2023
PROJECT No: D15-029
SHEET No: 5 OF 11

LICENSED PROFESSIONAL ENGINEER
A. B. PERALTA
100138683
PROVINCE OF ONTARIO



- 4+030.1 to 4+046.2: Existing Concrete Span Bridge (Bridge 12)
- 4+050.6 to 4+062.0: Existing Concrete Span Bridge (Bridge 13)
- 4+247.0 North R.O.W. Limit Mersea Road 7
- 4+248.2 to 4+253.6: Existing Concrete Span Bridge (Bridge 13)
- 4+260.1 South R.O.W. Limit Mersea Road 7
- 4+524.0 to 4+525.1: Existing Wooden Pedestrian Bridge (Bridge 14)
- 4+529.3 START OF WOODLOT AREA
- 4+730.1 to 4+736.9: Existing Concrete Span Bridge (Bridge 15)
- 4+736.9 START OF DRAIN IMPROVEMENTS
- 6+071.5 Start of Existing Lebo Creek Natural Watercourse Portion
- 6+224.9 Hooker Creek Enters From North
- 6+137.0 END OF WOODLOT AREA
- 6+198.7 to 6+199.7: Existing Concrete Span Bridge (Bridge 16)
- 6+198.7 START OF WOODLOT AREA
- 5+339.5 to 5+341.0: Existing Wooden Pedestrian Bridge (Bridge 17)
- 5+420.9 to 5+425.9: Existing Wooden Pedestrian Bridge (Bridge 18)
- 5+493.1 Existing Steel Pipe Pedestrian Bridge with Rolling (Bridge 19)
- 5+789.8 to 5+792.0: Existing Wooden Pedestrian Bridge (Bridge 20)
- 6+037.6 END OF WOODLOT AREA
- 6+770.5 John Leslie Drain Enters From West
- 6+881.6 to 6+891.7: Existing Concrete Span Bridge (Bridge 21)
- 6+891.6 North R.O.W. Limit Mersea Road 6
- 6+891.7 to 6+910.7: Existing Concrete Span Bridge (Bridge 22)
- 6+910.7 to 6+915.2: Existing Concrete Span Bridge (Bridge 22)
- 6+915.2 100mm HDPE Enters From SW (Inv.=182.329)
- 7+112.7 1600mm CSP Enters From E (Inv.=181.249)
- 7+868.5 North R.O.W. Limit Mersea Road 5
- 7+873.9 Hog-White Drain Enters From West
- 7+873.9 to 7+883.3: Existing Concrete Span Bridge (Bridge 23)
- 7+883.3 to 7+892.7: Existing Concrete Span Bridge (Bridge 23)
- 7+892.7 South R.O.W. Limit Mersea Road 5
- 7+892.7 START OF WOODLOT AREA
- 8+110.4 to 8+112.4: Existing Prefabricated Steel Span Pedestrian Bridge (Bridge 24)
- 9+429.7 to 9+431.9: Existing Wooden Pedestrian Bridge (Bridge 25)
- 9+432.0 END OF DRAIN IMPROVEMENTS
- 9+737.3 END OF WOODLOT AREA
- 9+751.4 LAKE WATER CROSSING
- 9+751.4 to 9+752.9: Existing Concrete Span Bridge (Bridge 26)
- 9+752.9 to 9+754.9: Existing Concrete Span Bridge (Bridge 26)
- 9+754.9 End of Existing Lebo Creek Natural Watercourse Portion
- 10+238.7 North R.O.W. Limit County Road 34
- 10+238.7 to 10+252.2: Existing Concrete Span Bridge (Bridge 27)
- 10+252.2 South R.O.W. Limit County Road 34
- 10+349.9 START OF WOODLOT AREA
- 10+852.4 to 10+857.7: Existing Clear Span Bridge on Steel I-Beams (Bridge 28)
- 10+857.7 to 10+860.7: Existing Clear Span Bridge on Steel I-Beams (Bridge 28)
- 10+860.7 to 10+875.2: Existing Clear Span Bridge on Steel I-Beams (Bridge 28)
- 10+875.2 LAKE WATER CROSSING
- 11+082.1 START OF WOODLOT AREA
- 11+458.6 END OF WOODLOT AREA
- 11+441.0 North R.O.W. Limit Mersea Road 19
- 11+441.0 to 11+458.6: Existing Concrete Span Bridge (Bridge 29)
- 11+458.6 to 11+462.0: Existing Concrete Span Bridge (Bridge 29)
- 11+462.0 to 11+463.4: Existing Concrete Span Bridge (Bridge 29)
- 11+463.4 to 11+465.4: Existing Concrete Span Bridge (Bridge 29)
- 11+465.4 750mm CSP Enters From N (Inv.=176.348)
- 12+019.2 to 12+029.2: Existing 6m Wide, 450mm Deep Vernal Pool
- 12+035.0 Existing Low Level Crossing (Bridge 31)
- 12+144.2 to 12+154.2: Existing 6m Wide, 450mm Deep Vernal Pool
- 12+354.2 to 12+394.2: Existing 6m Wide, 450mm Deep Vernal Pool
- 12+426.7 Existing Log Pedestrian Bridge (Bridge 32)
- 12+490.6 Piggett Creek Drain Enters From North
- 12+749.2 END OF WOODLOT AREA
- 12+756.9 to 12+766.6: Existing Pedestrian Bridge (Bridge 33)
- 12+949.0 START OF WOODLOT AREA
- 13+041.6 to 13+041.9: Existing 300mm HDPE From East
- 13+190.3 North R.O.W. Limit Deer Run Road
- 13+190.3 to 13+212.1: Existing Concrete Span Bridge (Bridge 34)
- 13+212.1 South R.O.W. Limit Deer Run Road
- 13+212.1 to 13+213.4: Existing Concrete Span Bridge (Bridge 34)
- 13+213.4 to 13+215.4: Existing Concrete Span Bridge (Bridge 34)
- 13+215.4 750mm CSP Enters From West
- 13+512.7 North R.O.W. Limit Fox Run Road
- 13+512.7 to 13+535.9: Existing Concrete Span Bridge (Bridge 35)
- 13+535.9 South R.O.W. Limit Fox Run Road



PROFILE - LEBO CREEK DRAIN
 Scale = 1:12,000 Hor.
 1:100 Vert.

- LEGEND**
- DENOTES FORESTED AREAS ALONG DRAIN
 - DENOTES BRIDGE IDENTIFICATION NUMBER

THESE DRAWINGS HAVE BEEN REDUCED IN SIZE AND THE SCALE THEREFORE VARIES. FULL SCALE DRAWINGS CAN BE VIEWED AT THE MUNICIPAL OFFICES IF REQUIRED.

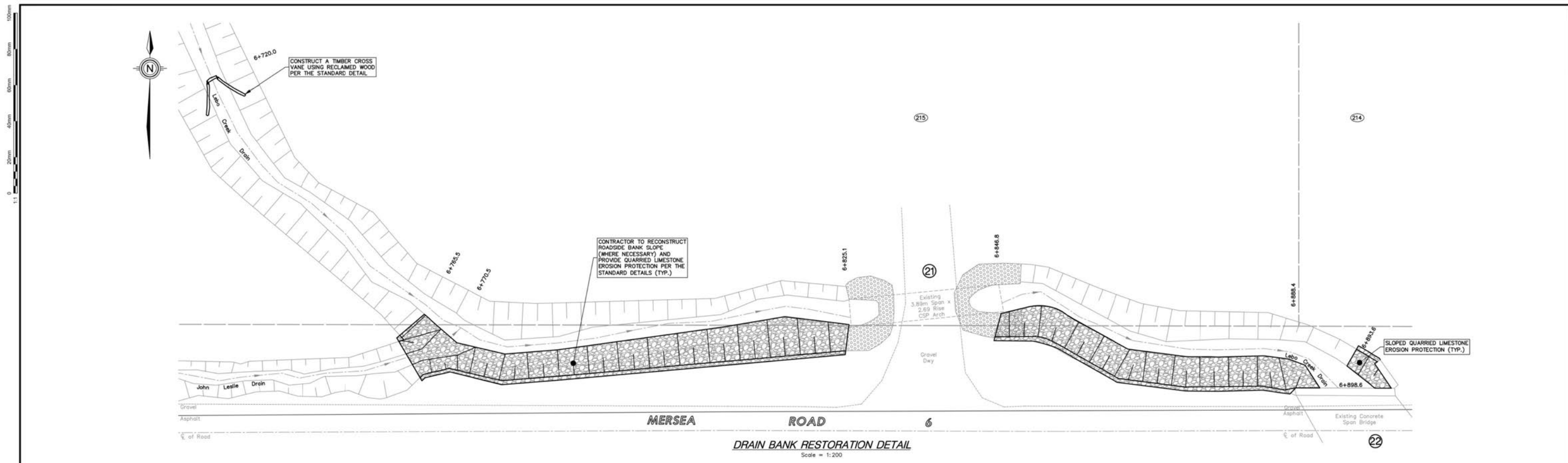
A.B. PERALTA
100138083
PROVINCE OF ONTARIO

Peralta Engineering

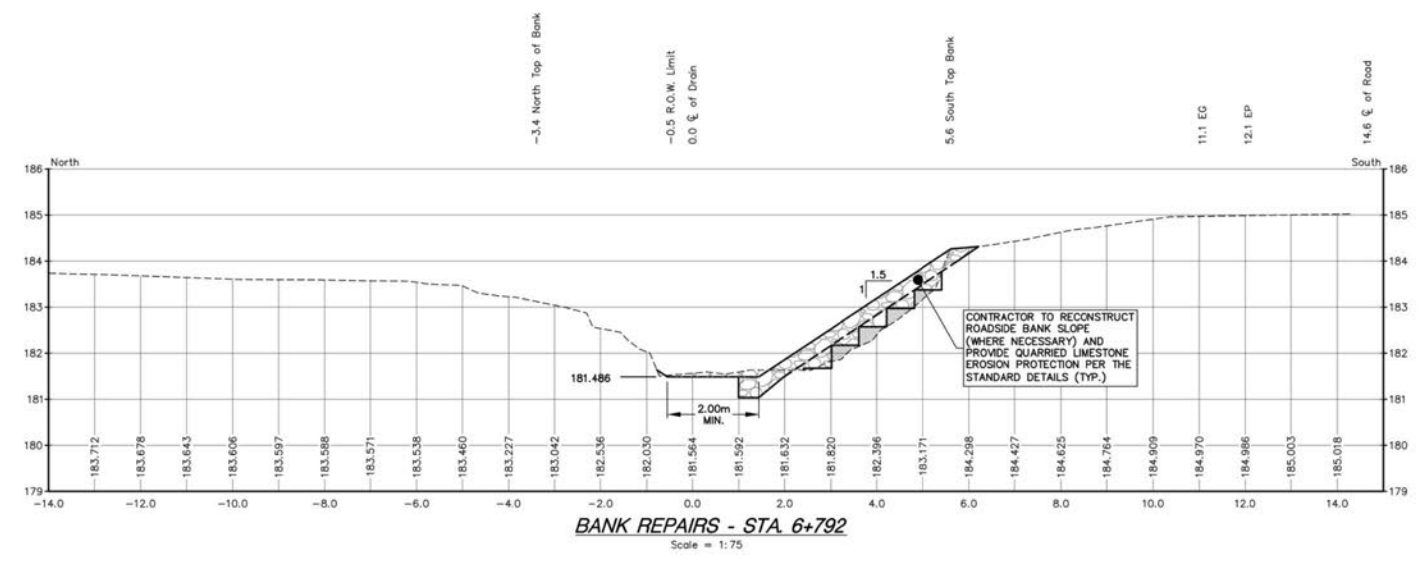
N.J. Peralta Engineering Ltd.
Consulting Engineers

45 Division Street North
Kingville, ON
N0Y 1E7, Canada
peraltaengineering.com

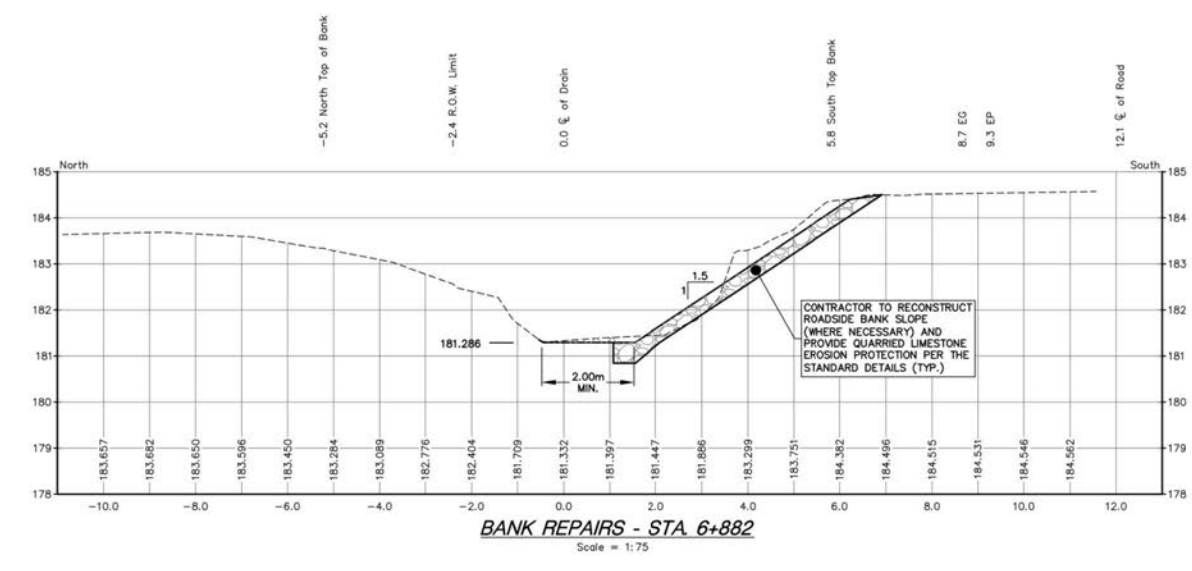
DATE: APR 28, 2023				
DESIGNED BY:	DRAWN BY:	CHECKED BY:	PROJECT No.:	SHEET No.:
A.B.P.	M.J.S.	A.B.P.	D15-029	6 OF 11



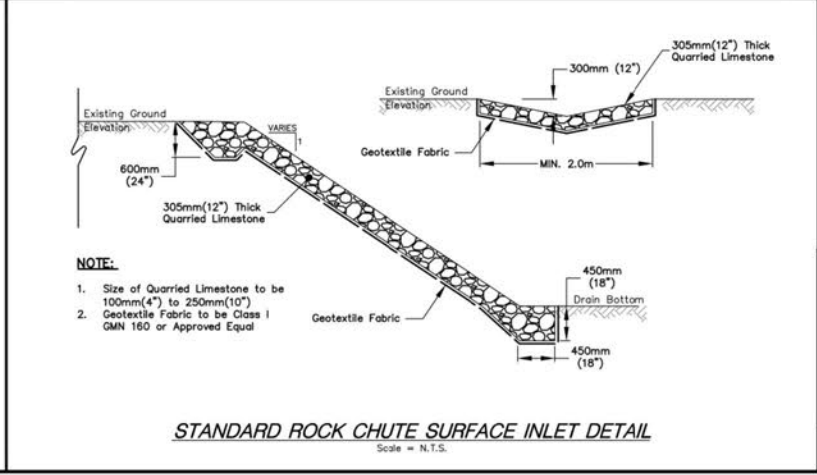
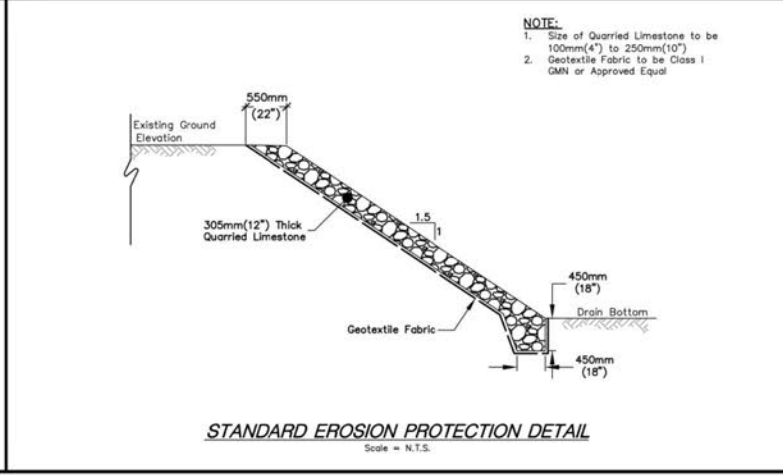
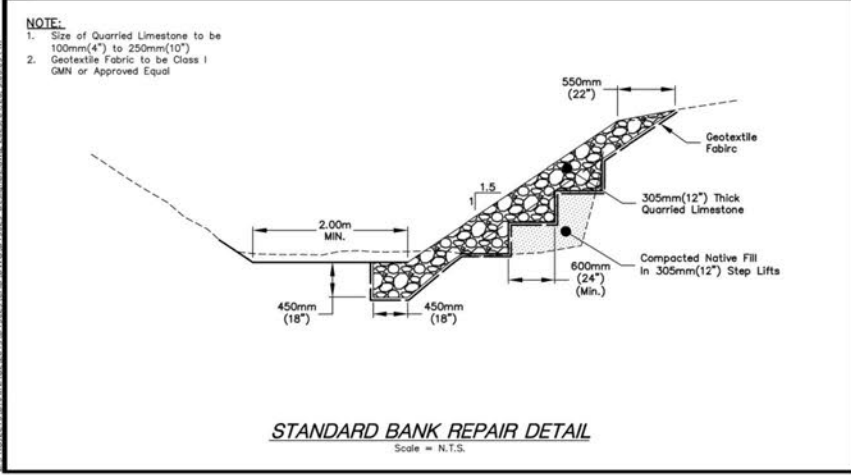
DRAIN BANK RESTORATION DETAIL
Scale = 1:200



BANK REPAIRS - STA. 6+792
Scale = 1:75



BANK REPAIRS - STA. 6+882
Scale = 1:75



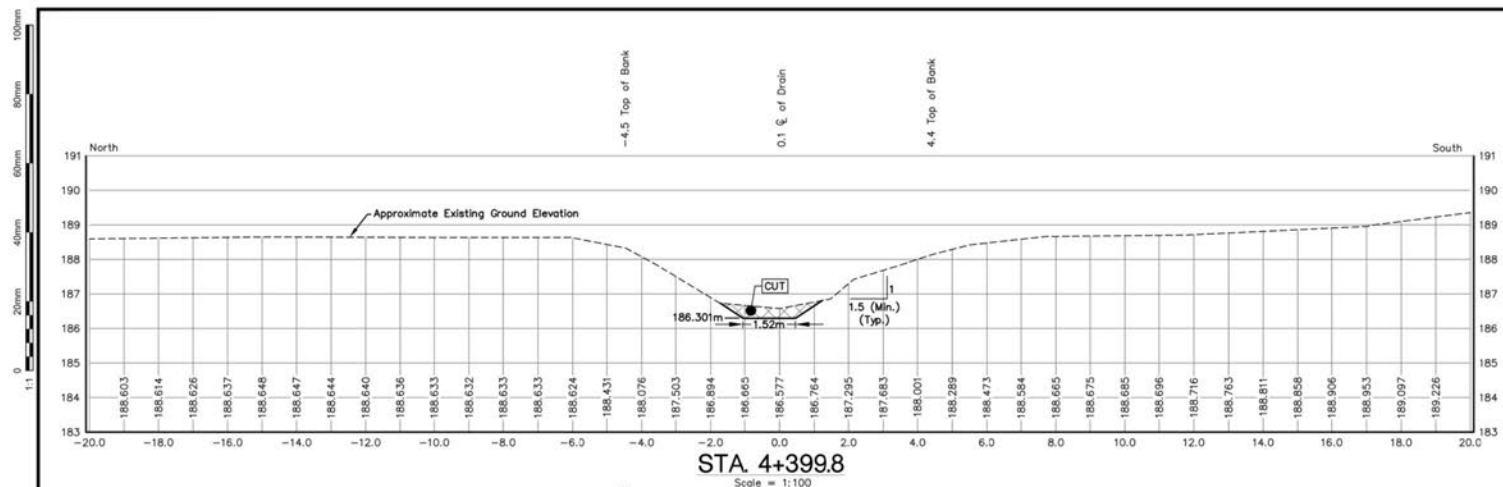
THESE DRAWINGS HAVE BEEN REDUCED IN SIZE AND THE SCALE THEREFORE VARIES. FULL SCALE DRAWINGS CAN BE VIEWED AT THE MUNICIPAL OFFICES IF REQUIRED.

LICENSED PROFESSIONAL ENGINEER
A. B. PERALTA
100138683
PROVINCE OF ONTARIO

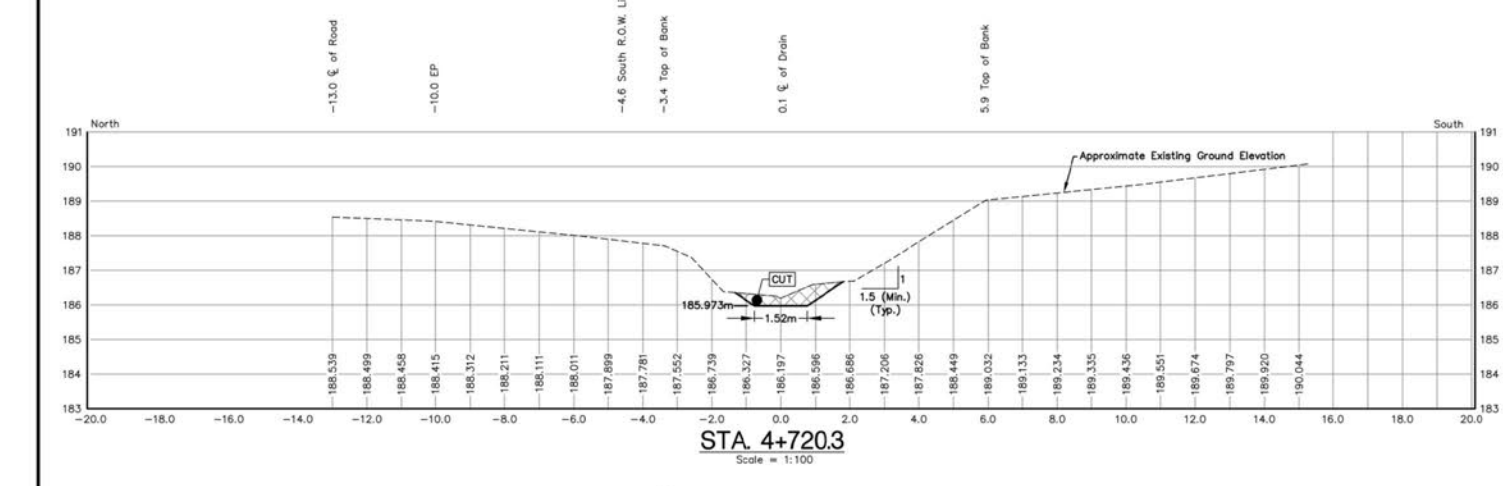
Peralta Engineering
N.J. Peralta Engineering Ltd.
Consulting Engineers
45 Division Street North
Kingville, ON
N0Y 1E7, Canada
P: 519-733-6587
F: 519-733-6588
peraltaengineering.com

DATE: APR 28, 2023

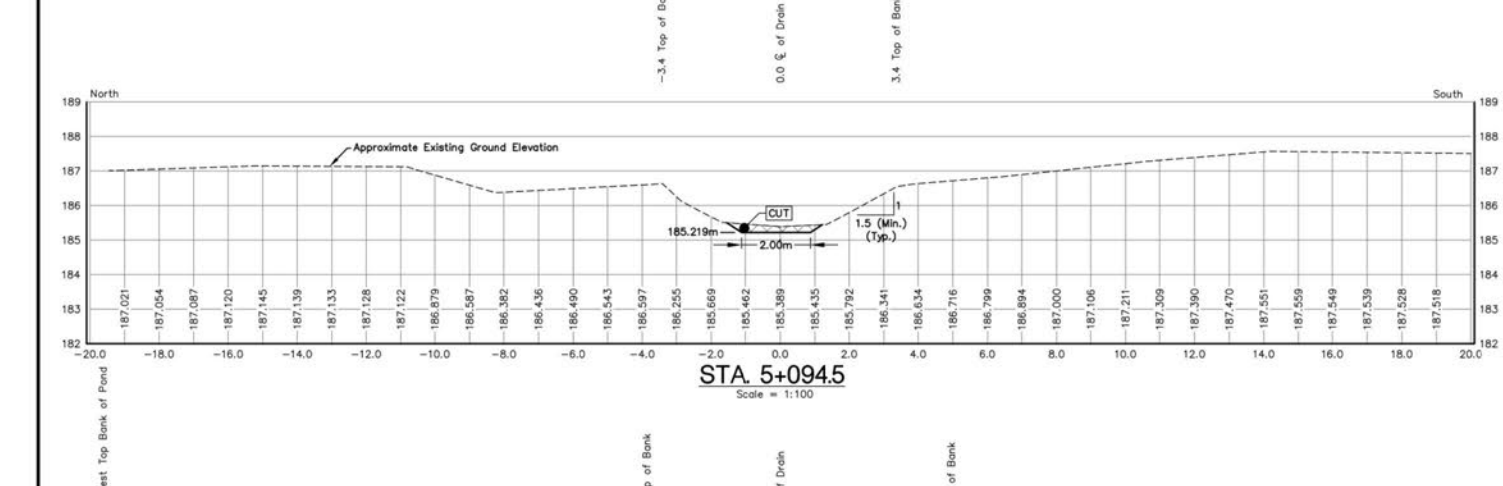
DESIGNED BY: A.B.P.	DRAWN BY: M.J.S.	CHECKED BY: A.B.P.	PROJECT No.: D15-029	SHEET No.: 7 OF 11
------------------------	---------------------	-----------------------	-------------------------	-----------------------



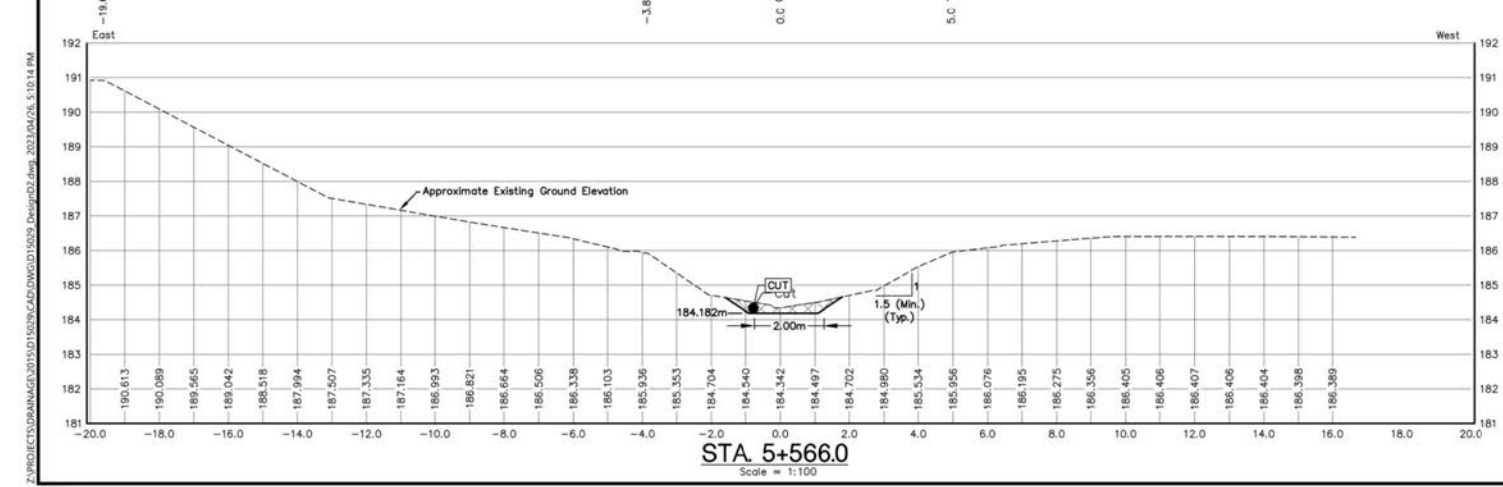
STA 4+399.8
Scale = 1:100



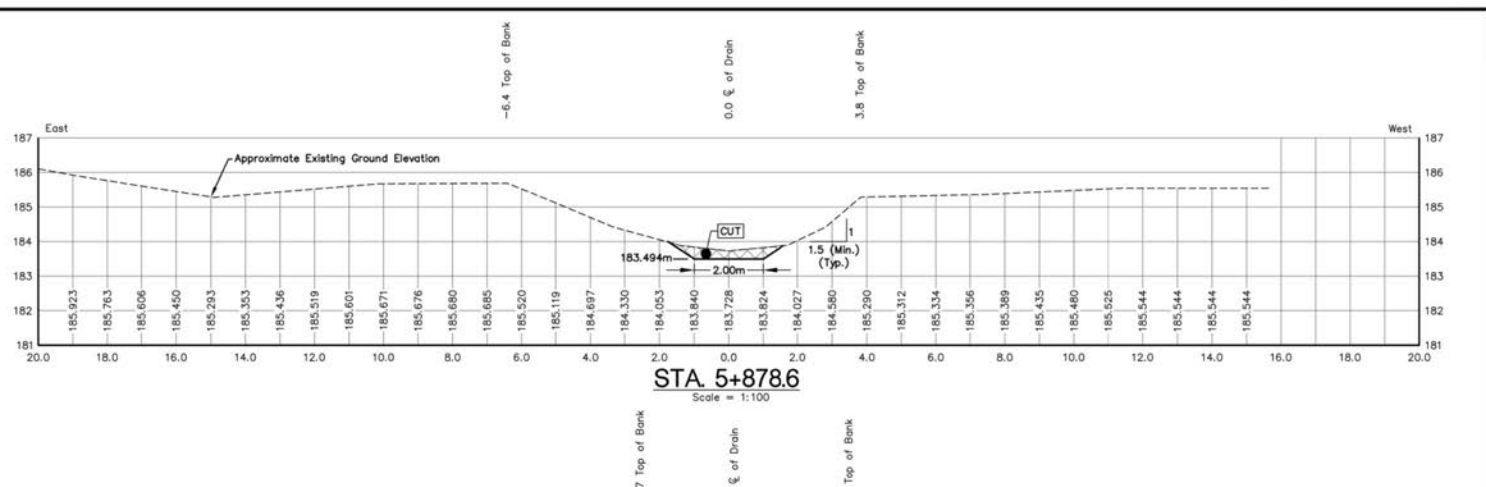
STA 4+720.3
Scale = 1:100



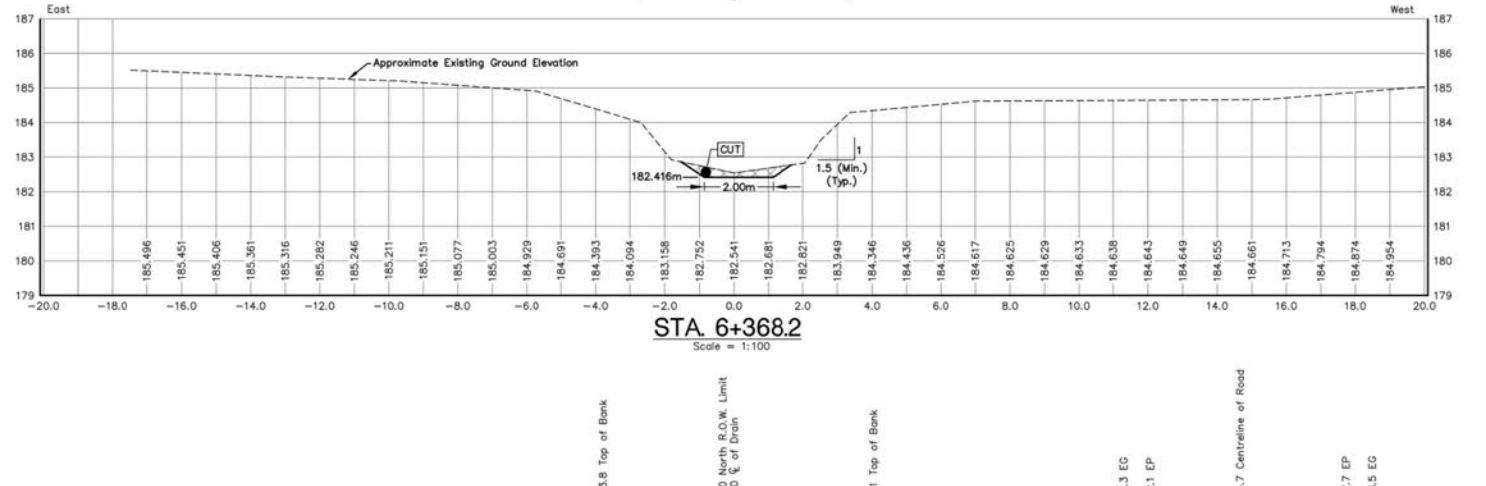
STA 5+094.5
Scale = 1:100



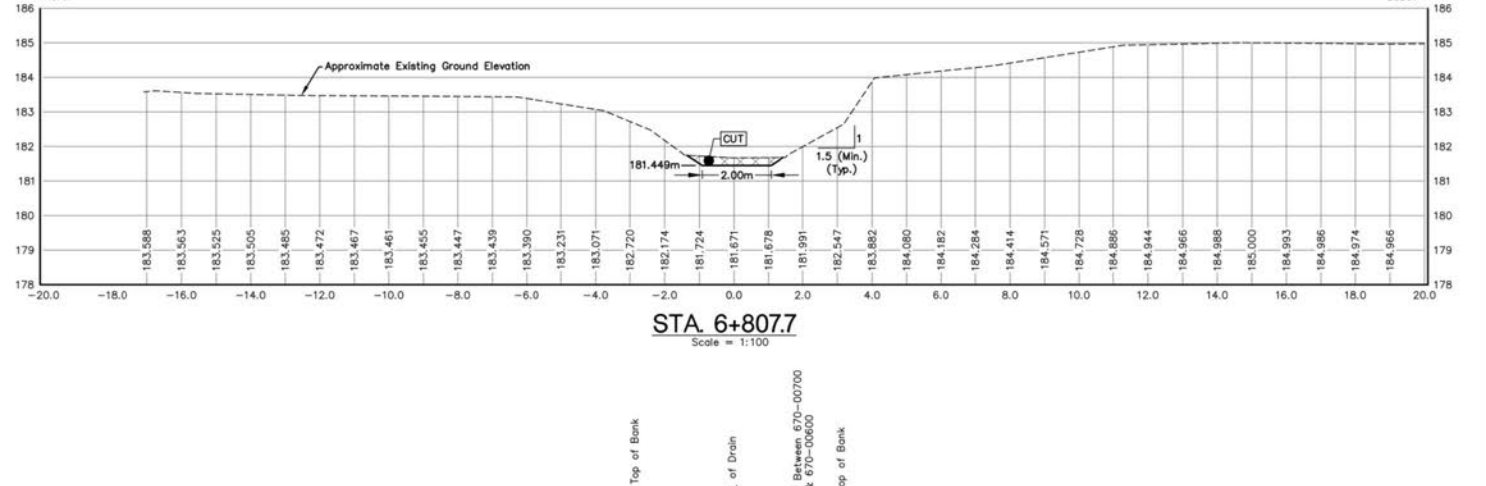
STA 5+566.0
Scale = 1:100



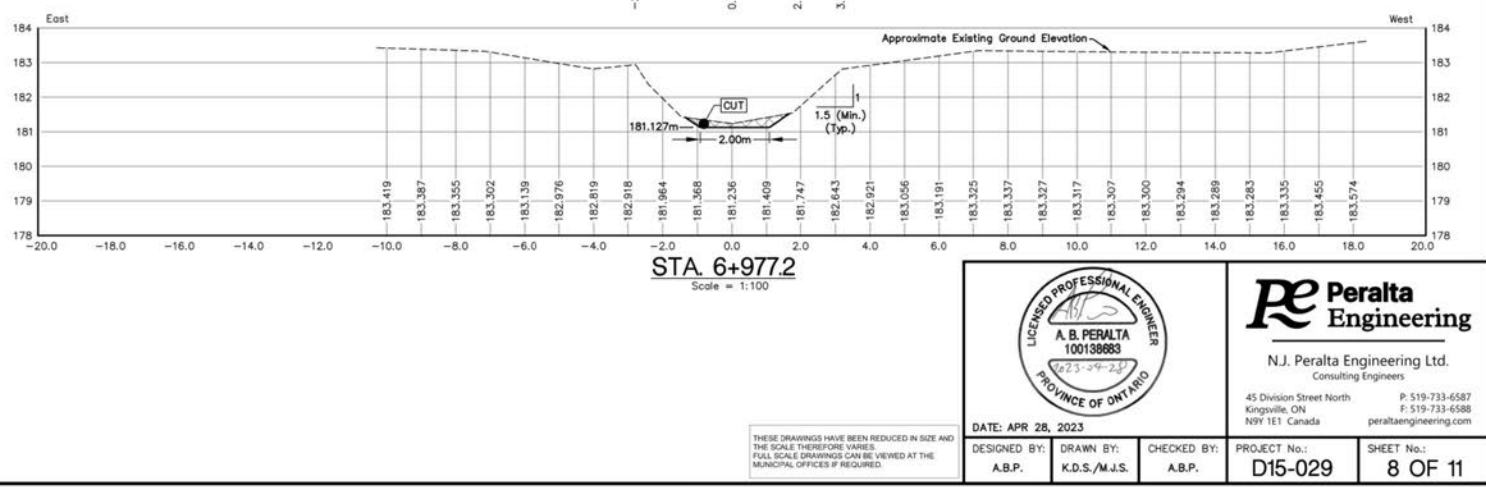
STA 5+878.6
Scale = 1:100



STA 6+368.2
Scale = 1:100



STA 6+807.7
Scale = 1:100



STA 6+977.2
Scale = 1:100

THESE DRAWINGS HAVE BEEN REDUCED IN SIZE AND THE SCALE THEREFORE VARIES. FULL SCALE DRAWINGS CAN BE VIEWED AT THE MUNICIPAL OFFICES IF REQUIRED.



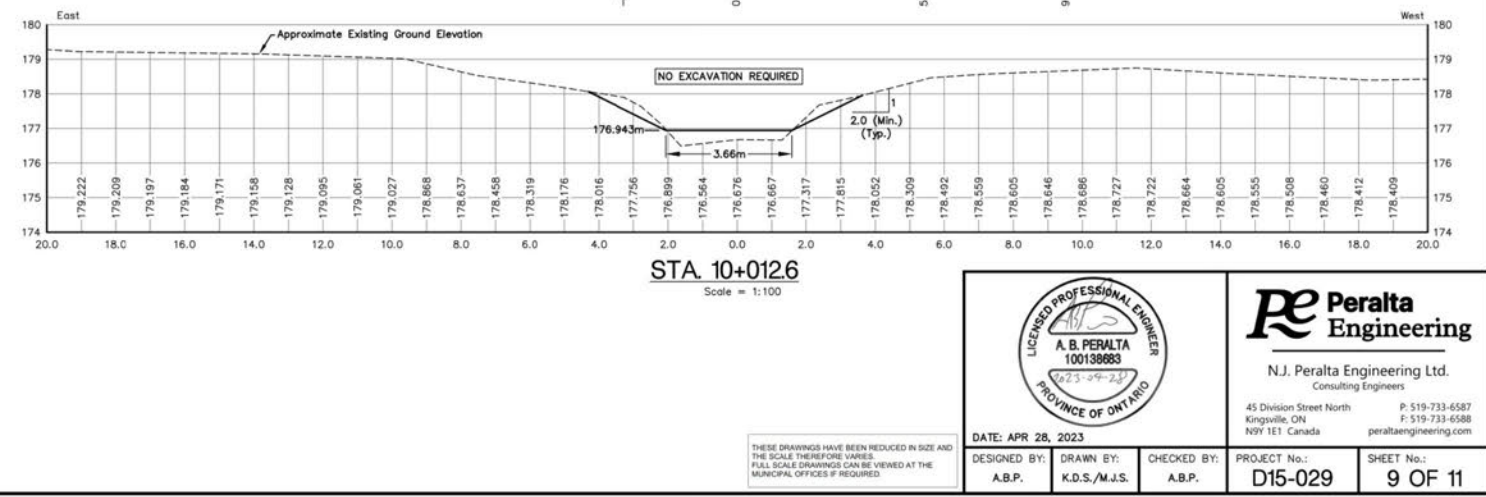
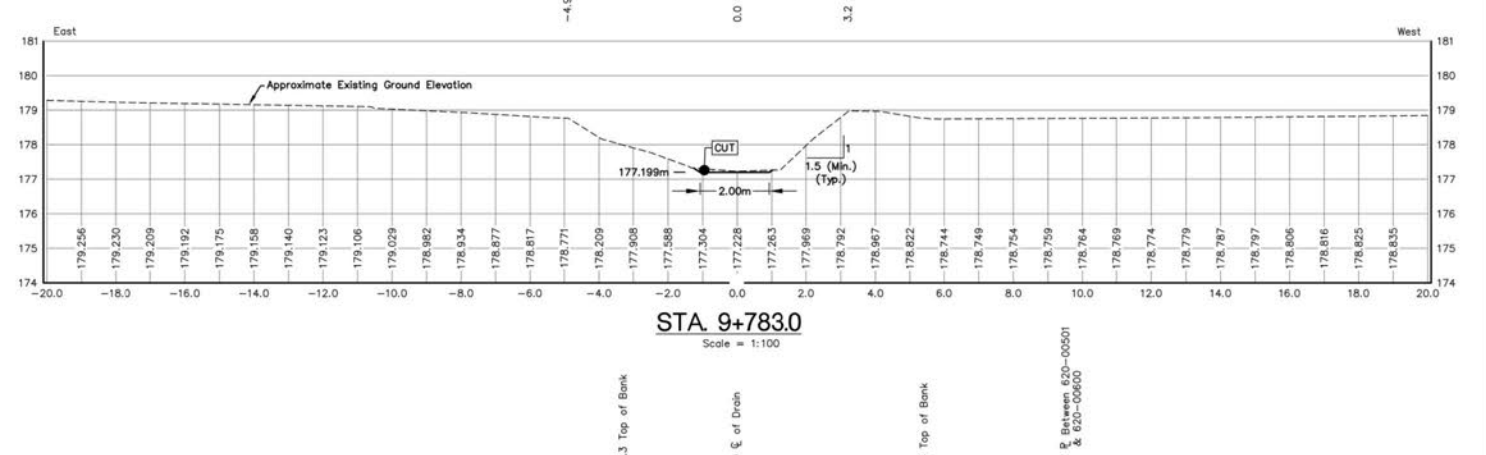
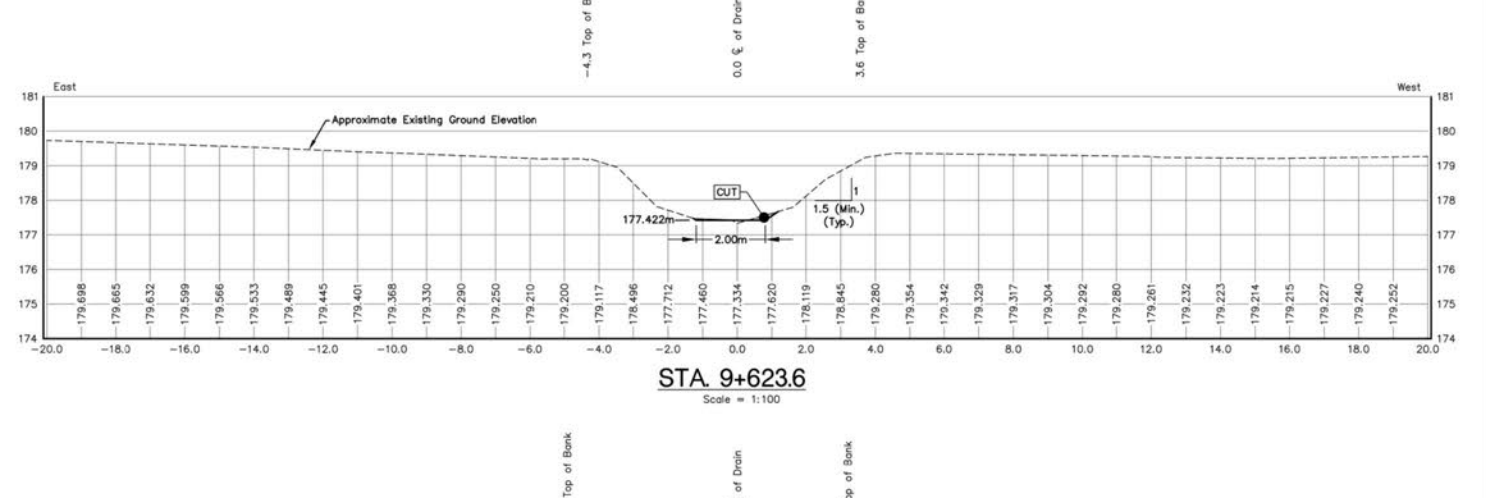
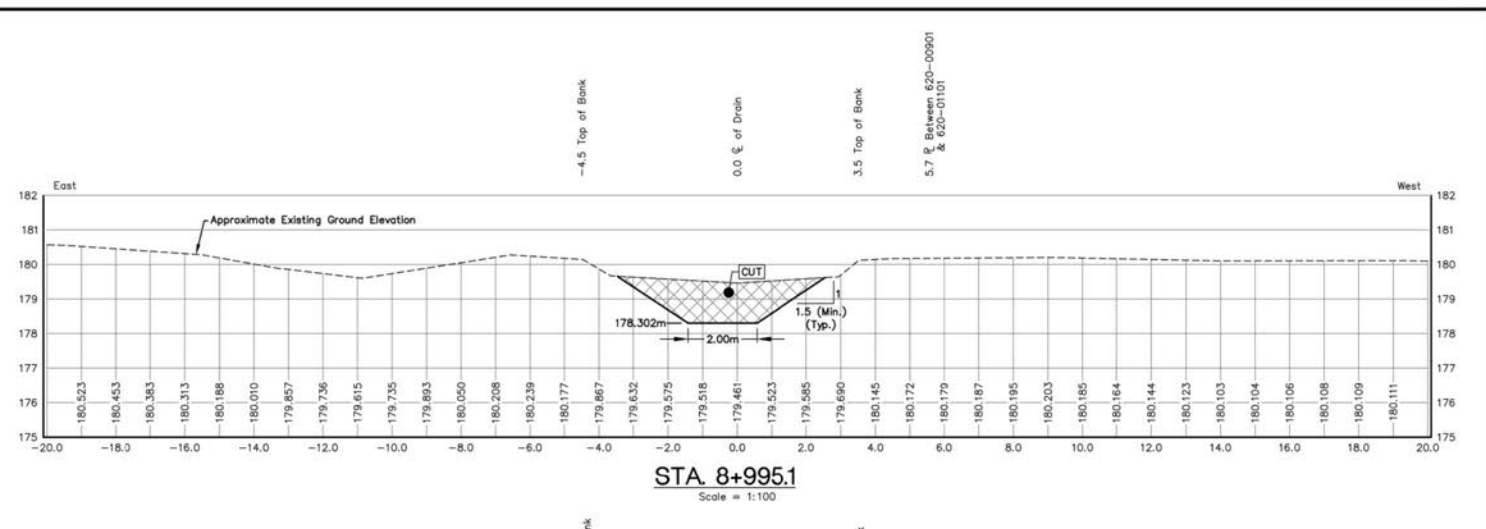
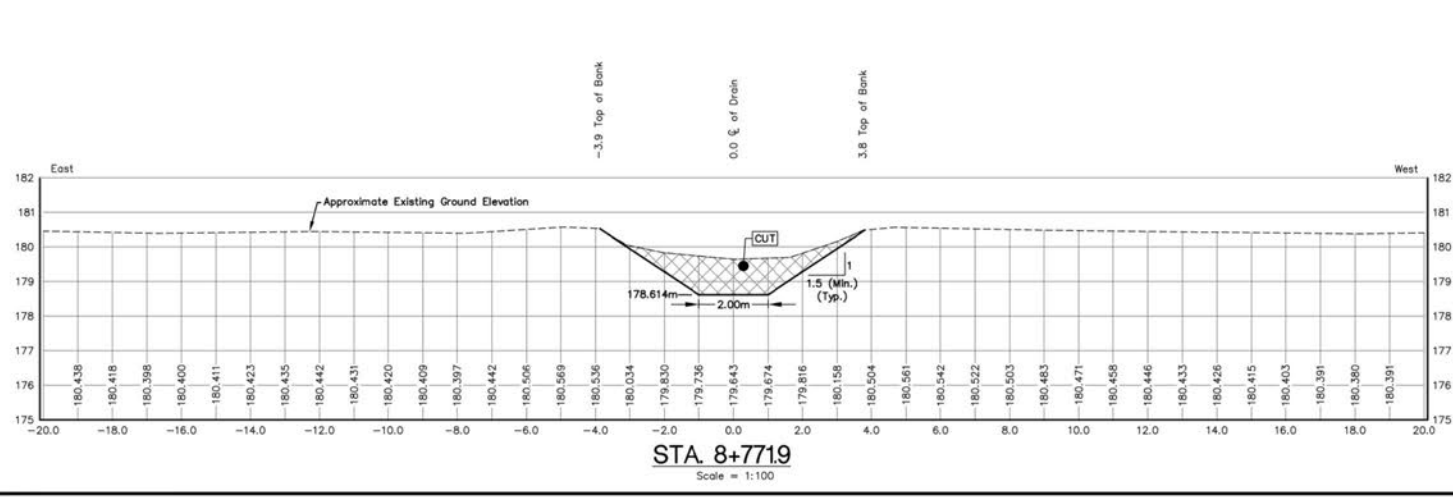
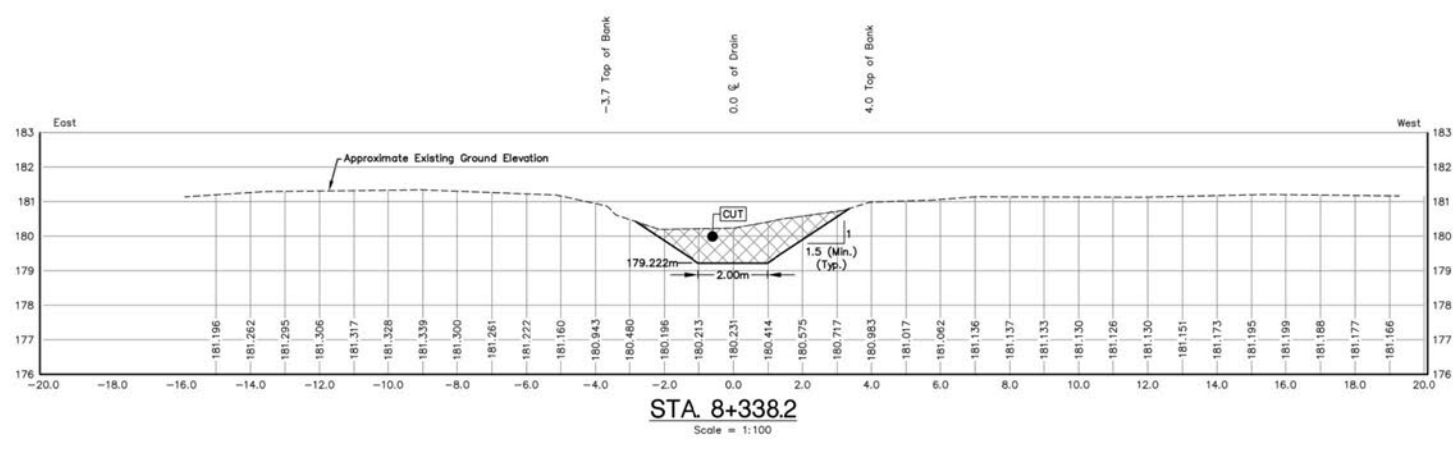
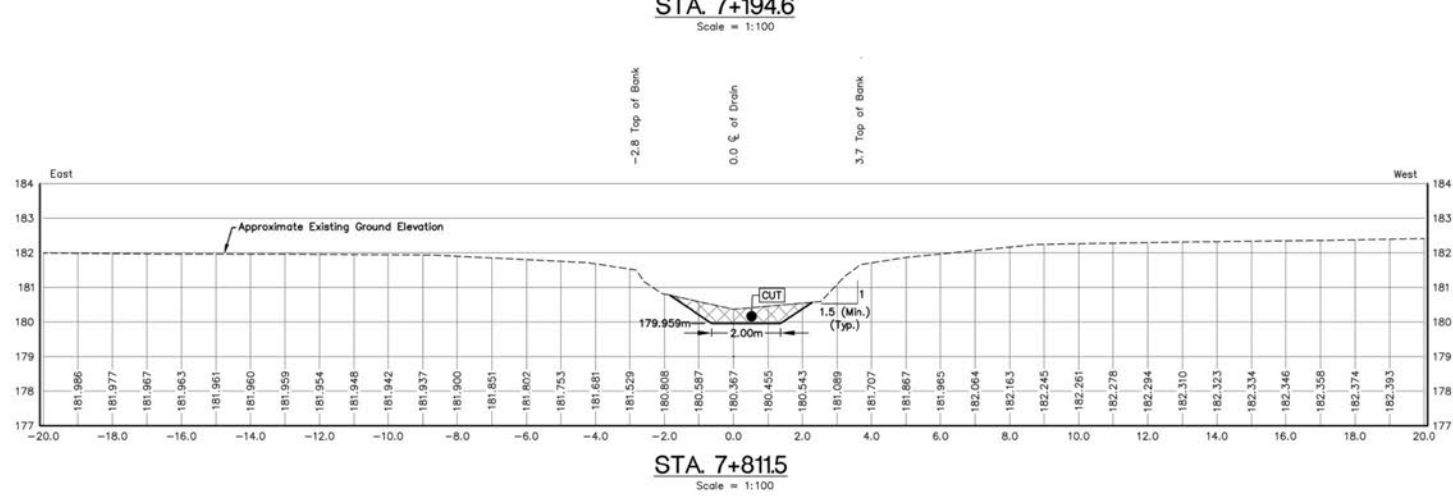
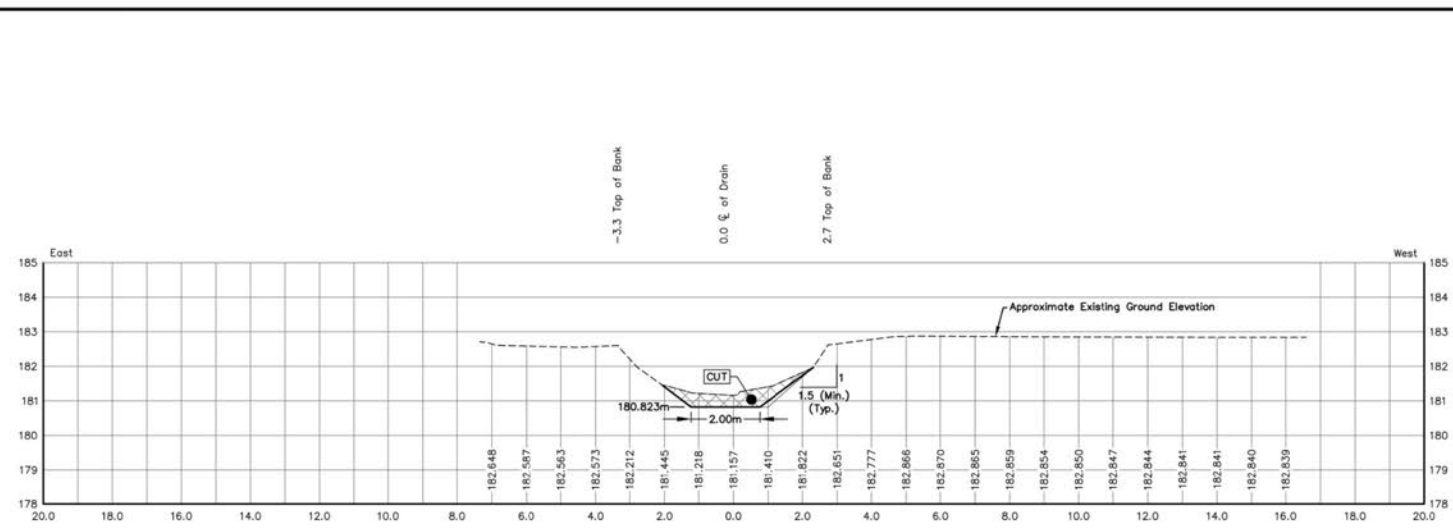
Peralta Engineering
N.J. Peralta Engineering Ltd.
Consulting Engineers

45 Division Street North
Kingville, ON
N0Y 1E1, Canada
P: 519-733-6587
F: 519-733-6588
www.peraltaengineering.com

DATE: APR 28, 2023	DESIGNED BY: A.B.P.	DRAWN BY: K.D.S./M.J.S.	CHECKED BY: A.B.P.	PROJECT No.: D15-029	SHEET No.: 8 OF 11
--------------------	---------------------	-------------------------	--------------------	----------------------	--------------------

Z:\PROJECTS\DRAINAGE\01\1\1\1\1\1\CAD\DWG\015809_Design\02.dwg, 2023/04/26, 5:10:14 PM

100mm
80mm
60mm
40mm
20mm
0
1:1
 Z:\PROJECTS\BANKMANAGEMENT\01\15029\CAD\DWG\0115029_DWG02.dwg 2023/04/26 5:14:38 PM

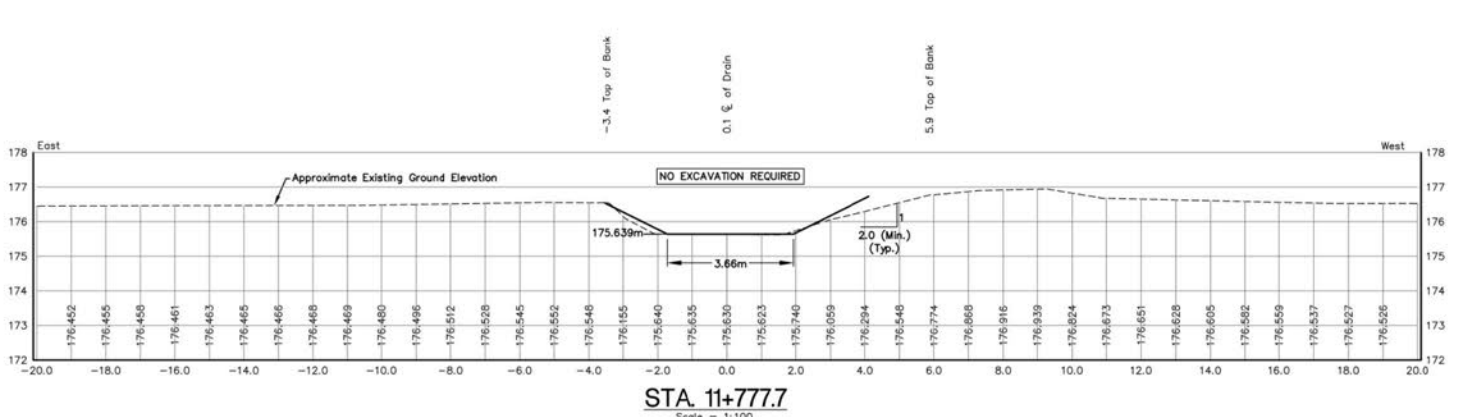
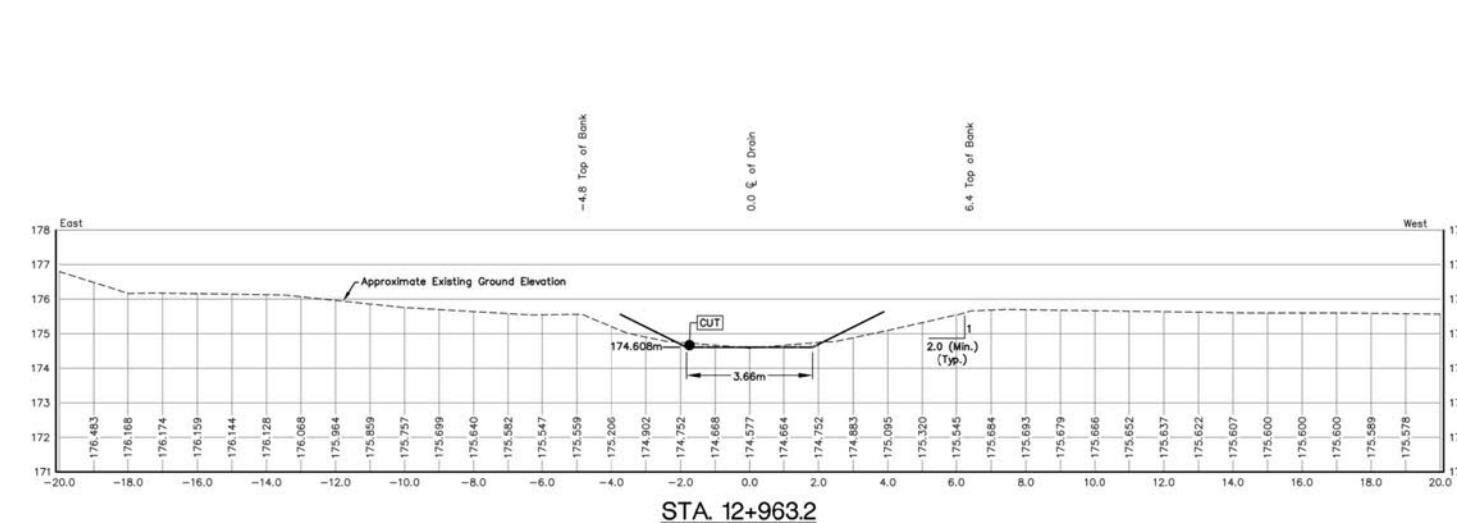
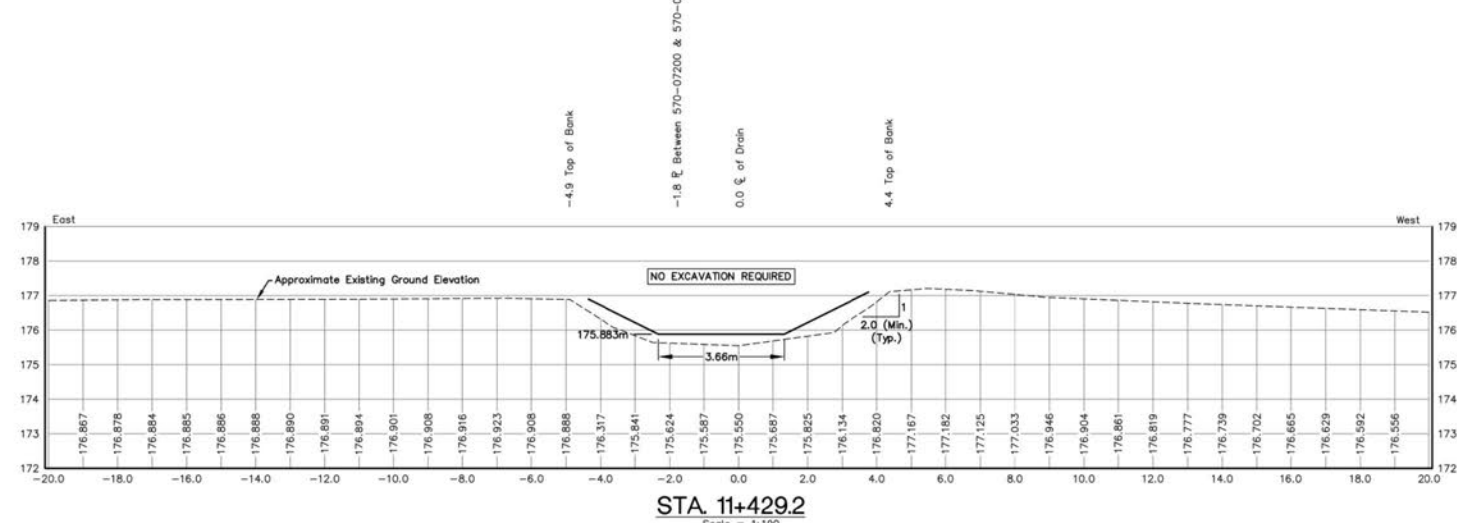
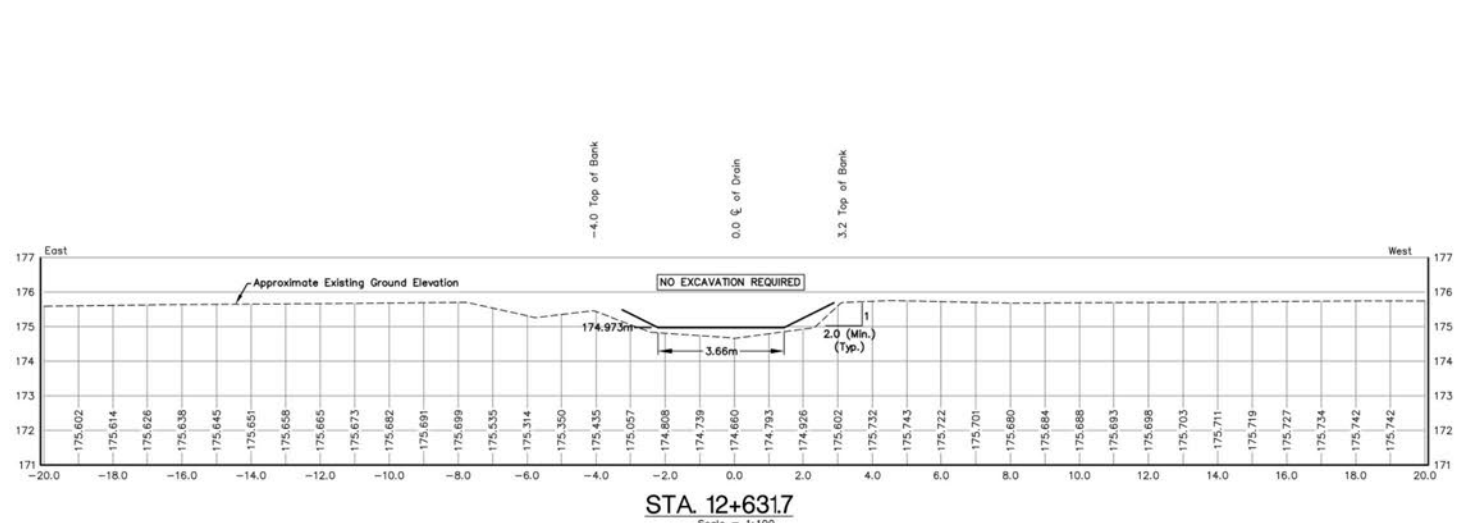
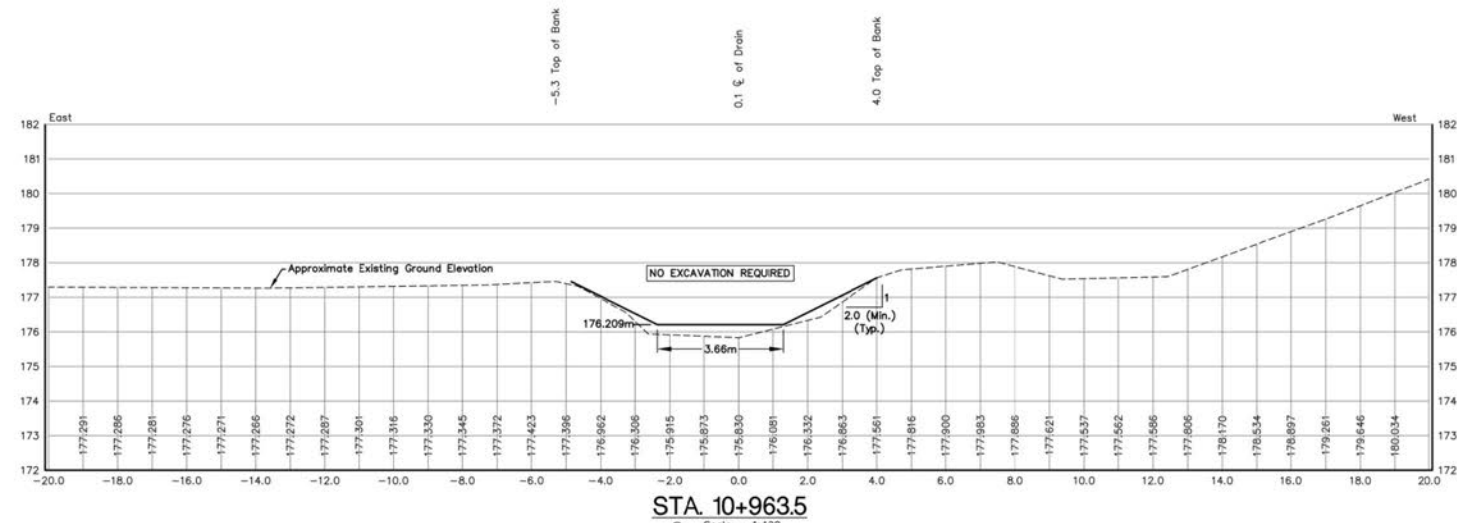
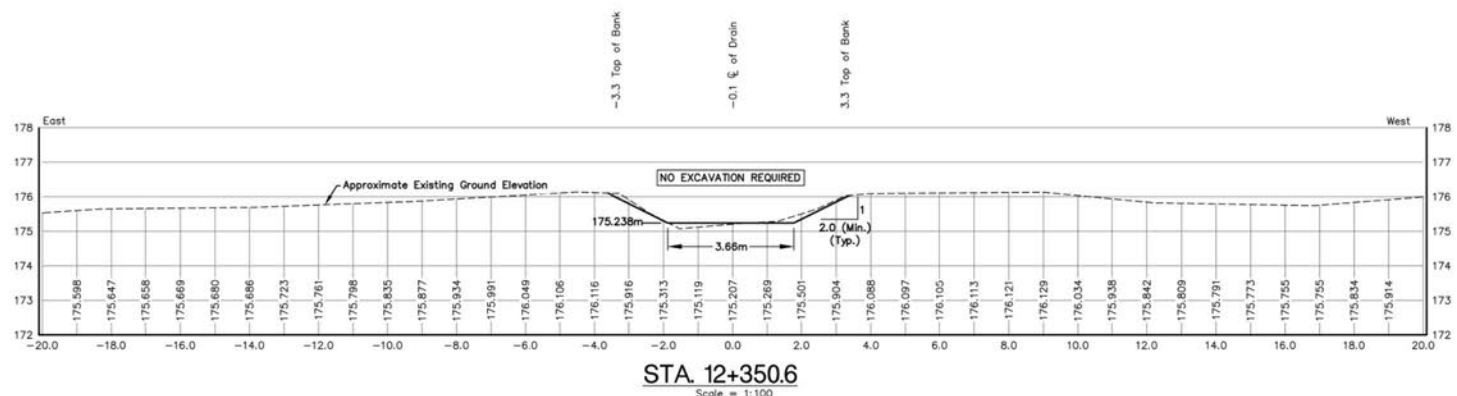
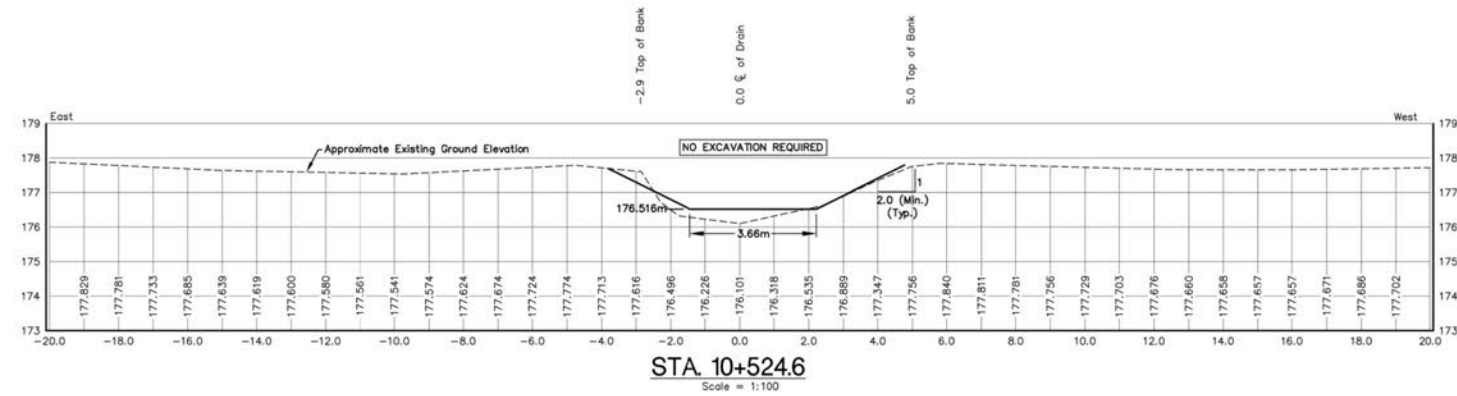


THESE DRAWINGS HAVE BEEN REDUCED IN SIZE AND THE SCALE THEREFORE VARIES. FULL SCALE DRAWINGS CAN BE VIEWED AT THE MUNICIPAL OFFICES IF REQUIRED.



Peralta Engineering
N.J. Peralta Engineering Ltd.
Consulting Engineers
45 Division Street North
Kingville, ON
N0Y 1E7, Canada
P: 519-733-6587
F: 519-733-6588
peraltaengineering.com

DATE: APR 28, 2023	DESIGNED BY: A.B.P.	DRAWN BY: K.D.S./M.J.S.	CHECKED BY: A.B.P.	PROJECT No.: D15-029	SHEET No.: 9 OF 11
--------------------	---------------------	-------------------------	--------------------	----------------------	--------------------



THESE DRAWINGS HAVE BEEN REDUCED IN SIZE AND THE SCALE THEREFORE VARIES. FULL SCALE DRAWINGS CAN BE VIEWED AT THE MUNICIPAL OFFICES IF REQUIRED.



Peralta Engineering

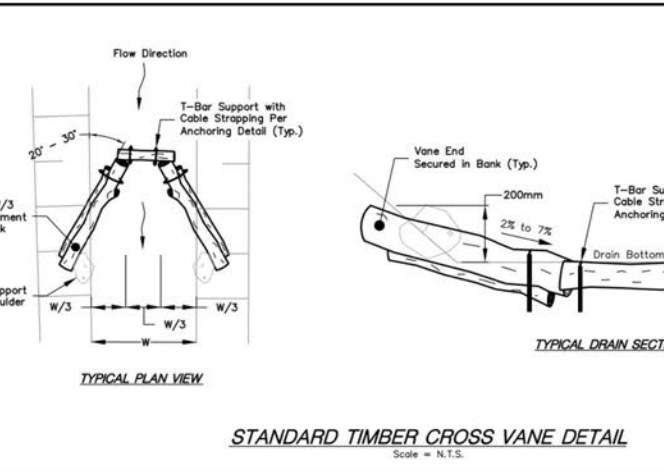
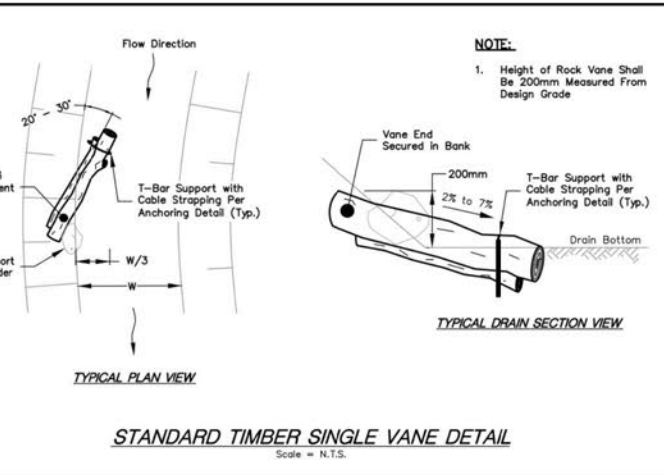
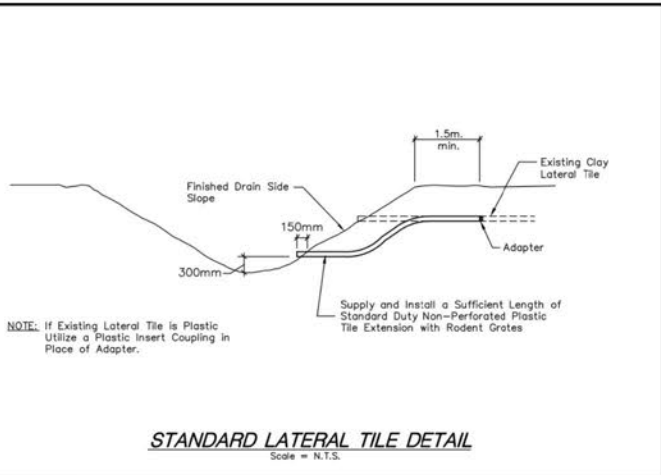
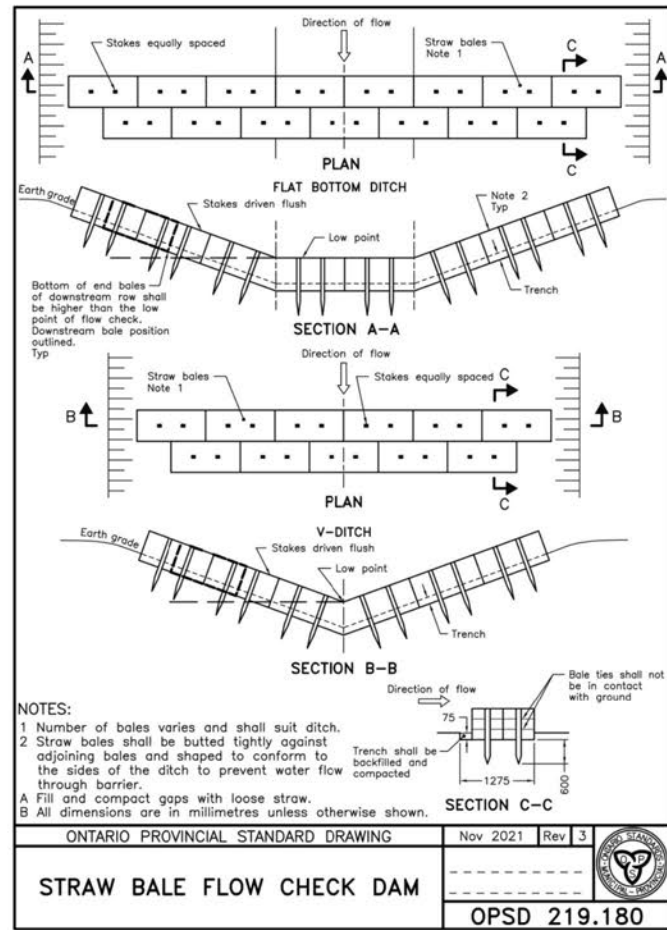
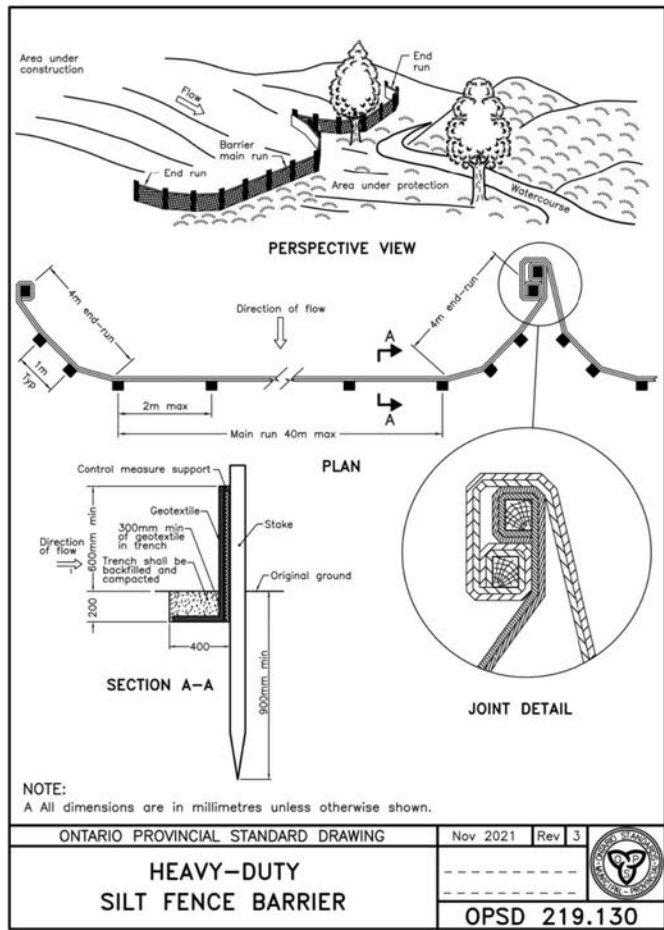
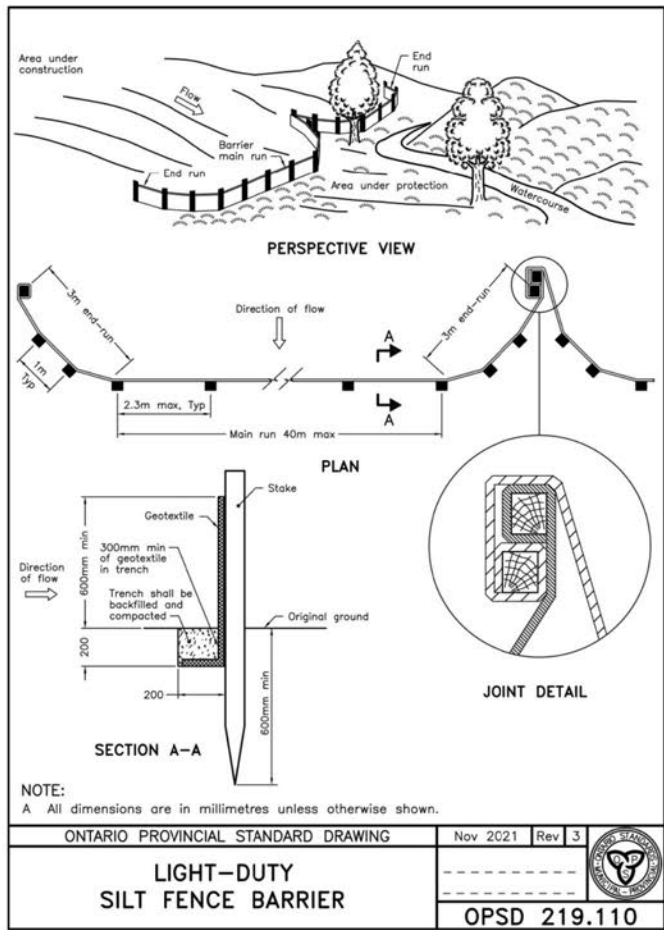
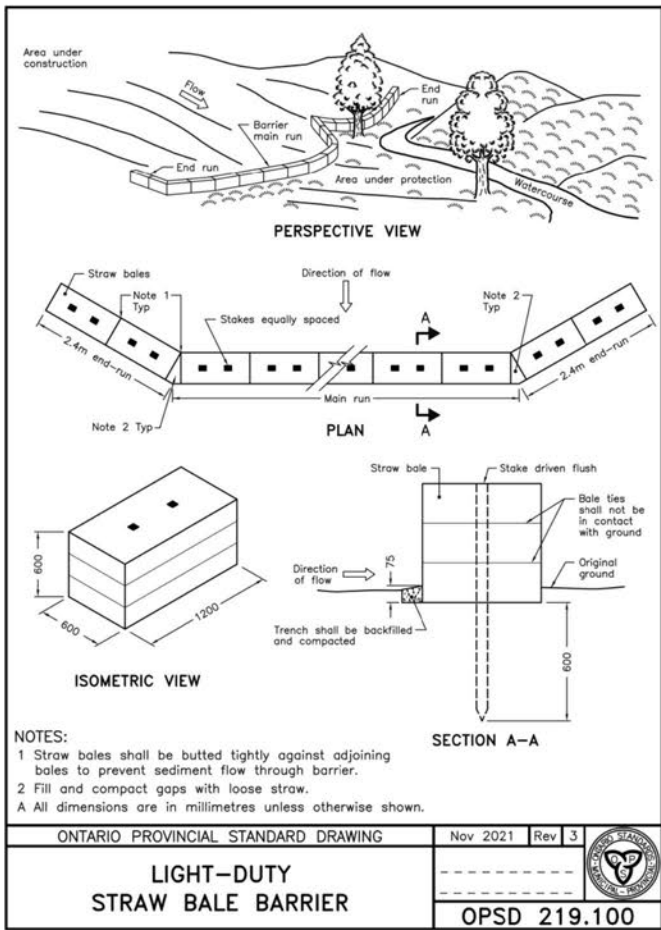
N.J. Peralta Engineering Ltd.
Consulting Engineers
45 Division Street North
Kingville, ON
N0Y 1E7, Canada
P: 519-733-6587
F: 519-733-6588
peraltaengineering.com

DATE: APR 28, 2023	DESIGNED BY: A.B.P.	DRAWN BY: K.D.S./M.J.S.	CHECKED BY: A.B.P.	PROJECT No.: D15-029	SHEET No.: 10 OF 11
--------------------	---------------------	-------------------------	--------------------	----------------------	---------------------

Z:\PROJECTS\BARRAGE\01015029\CAD\DWG\015029_Design\02.dwg, 2023/04/26, 5:17:45 PM

100mm
80mm
60mm
40mm
20mm
0

THESE DRAWINGS HAVE BEEN REDUCED IN SIZE AND THE SCALE THEREFORE VARIES. FULL SCALE DRAWINGS CAN BE VIEWED AT THE MUNICIPAL OFFICES IF REQUIRED.



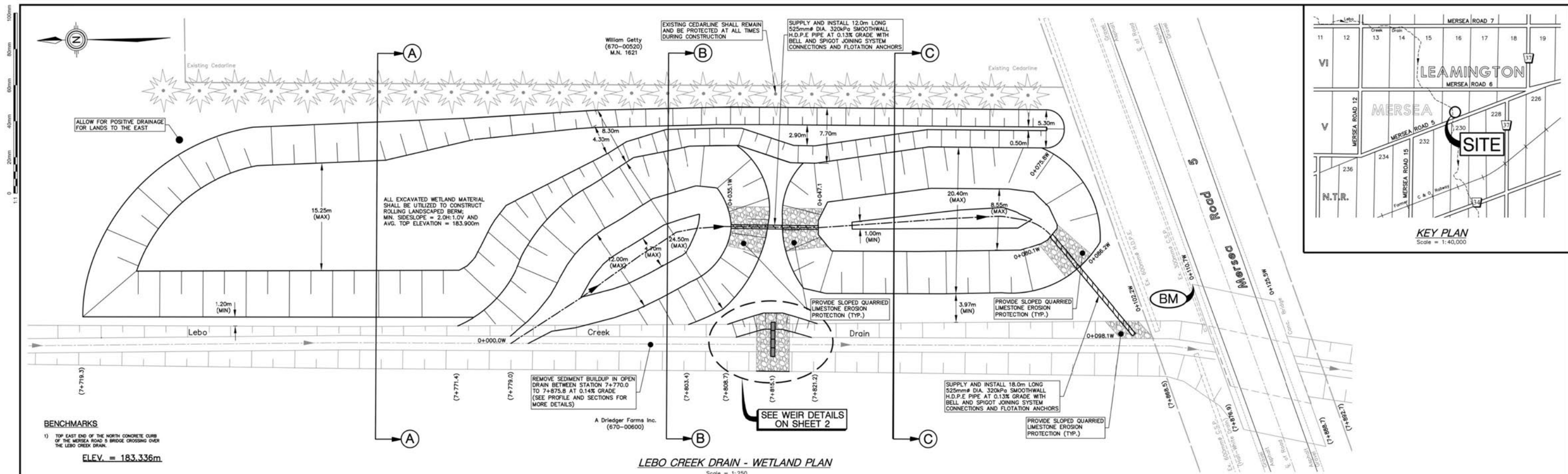
STANDARD T-BAR ANCHOR DETAIL
Scale = N.T.S.
Min. 1.20m (4.0') Long T-Bar Post, Set Top of Post Flush With Top of Log (Typ.), Stainless Steel Clamps and Cable to Suit, TYPICAL SECTION VIEW, TYPICAL PLAN VIEW.

LICENSED PROFESSIONAL ENGINEER
A. B. PERALTA
100138683
PROVINCE OF ONTARIO

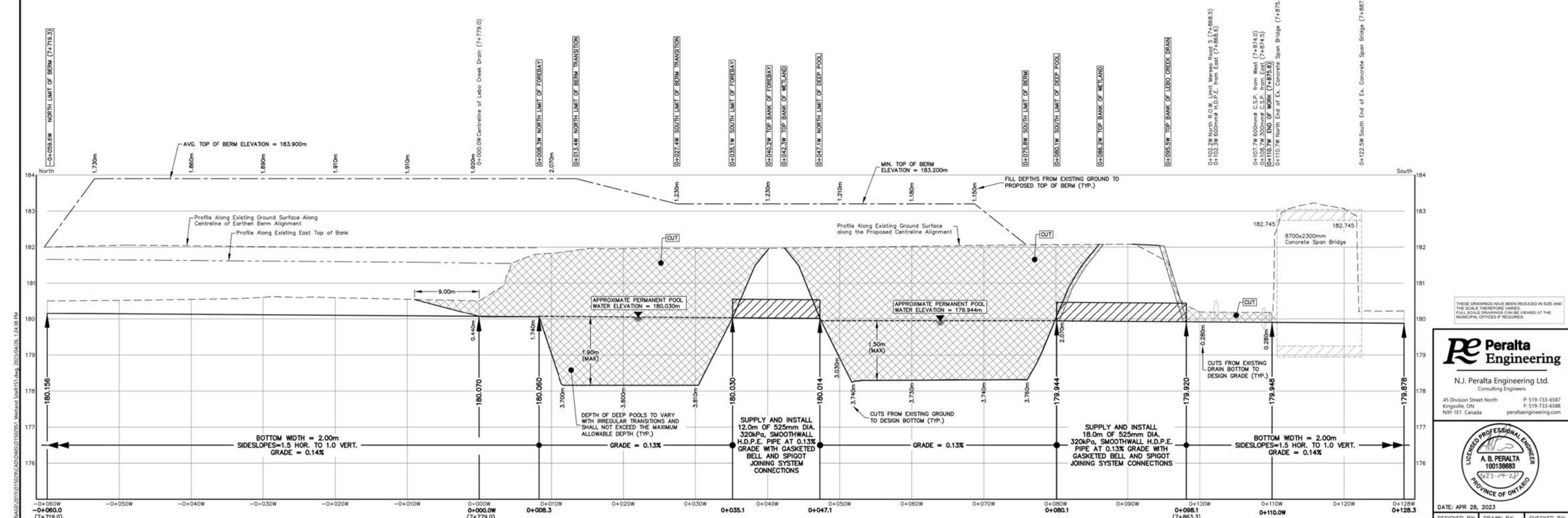
Peralta Engineering
N.J. Peralta Engineering Ltd.
Consulting Engineers
45 Division Street North
Kingville, ON
N0Y 1E7 Canada
peraltaengineering.com
P: 519-733-6587
F: 519-733-6588

DATE: APR 28, 2023
DESIGNED BY: A.B.P. DRAWN BY: M.J.S. CHECKED BY: A.B.P. PROJECT No.: D15-029 SHEET No.: 11 OF 11

Z:\PROJECTS\BARRIERS\01010101\DWG\01010101.dwg, 2023/04/28, 5:18:12 PM



LEBO CREEK DRAIN - WETLAND PLAN
Scale = 1:250



LEBO CREEK DRAIN - WETLAND PROFILE
Scale = 1:250 Hor.
Scale = 1:50 Ver.

THESE DRAWINGS HAVE BEEN REDUCED IN SIZE AND THE SCALE THEREFORE VARIES. FULL SCALE DRAWINGS CAN BE VIEWED AT THE MUNICIPAL OFFICES IF REQUIRED.

Peralta Engineering
N.J. Peralta Engineering Ltd.
Consulting Engineers

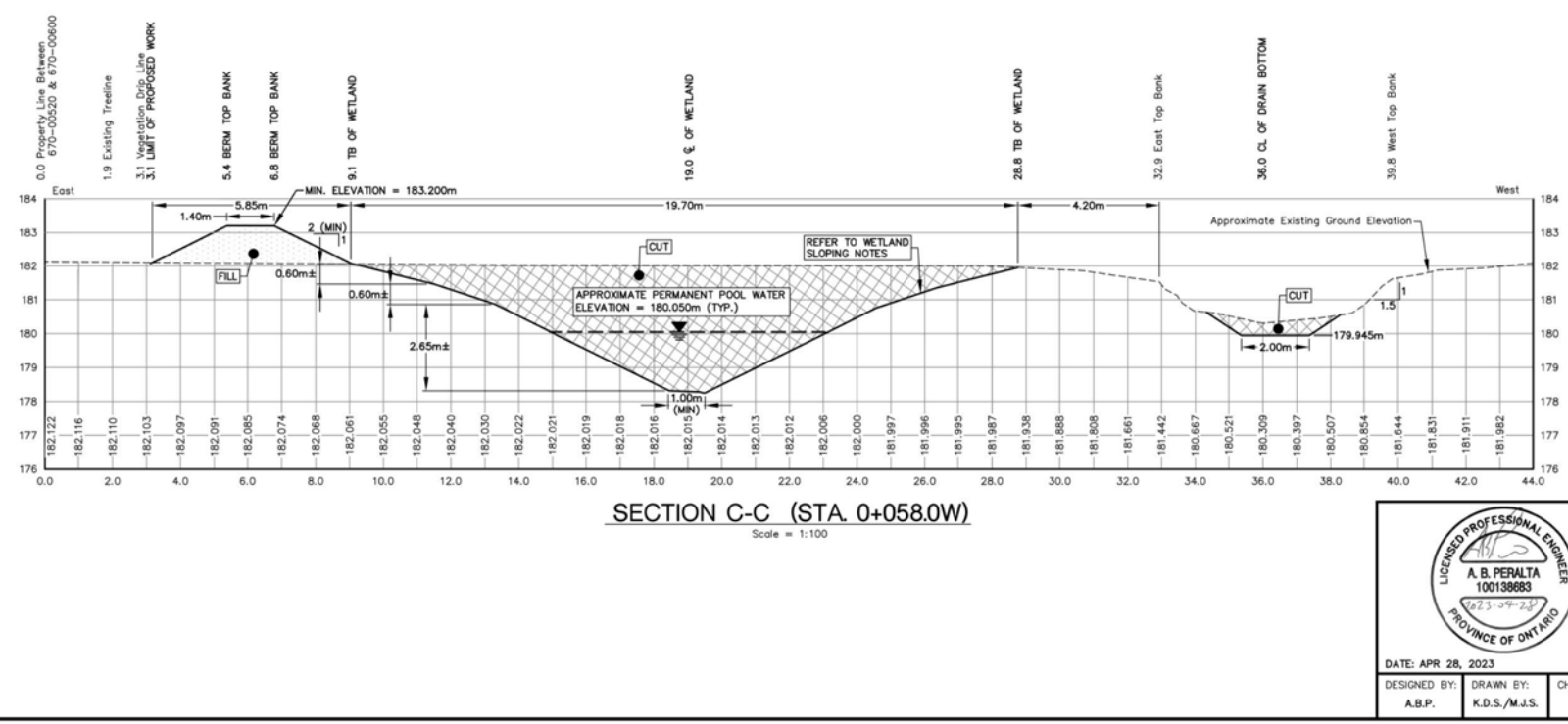
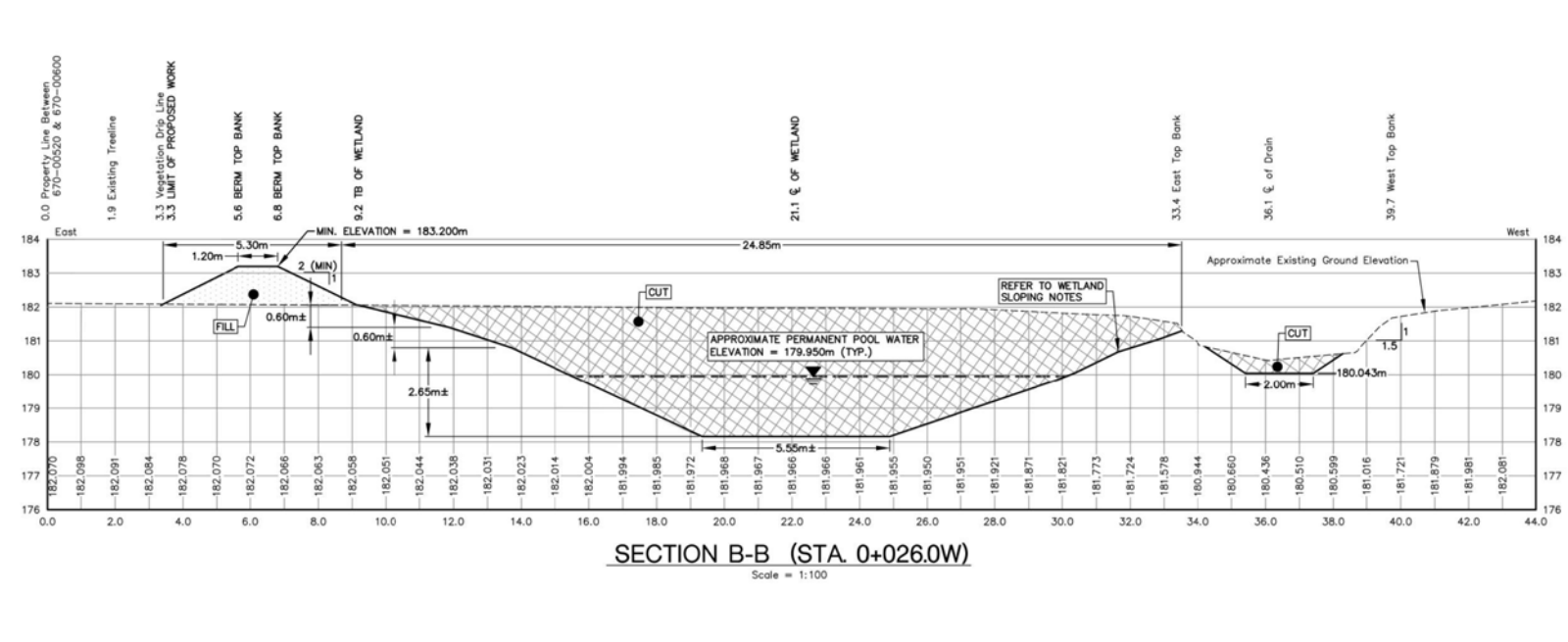
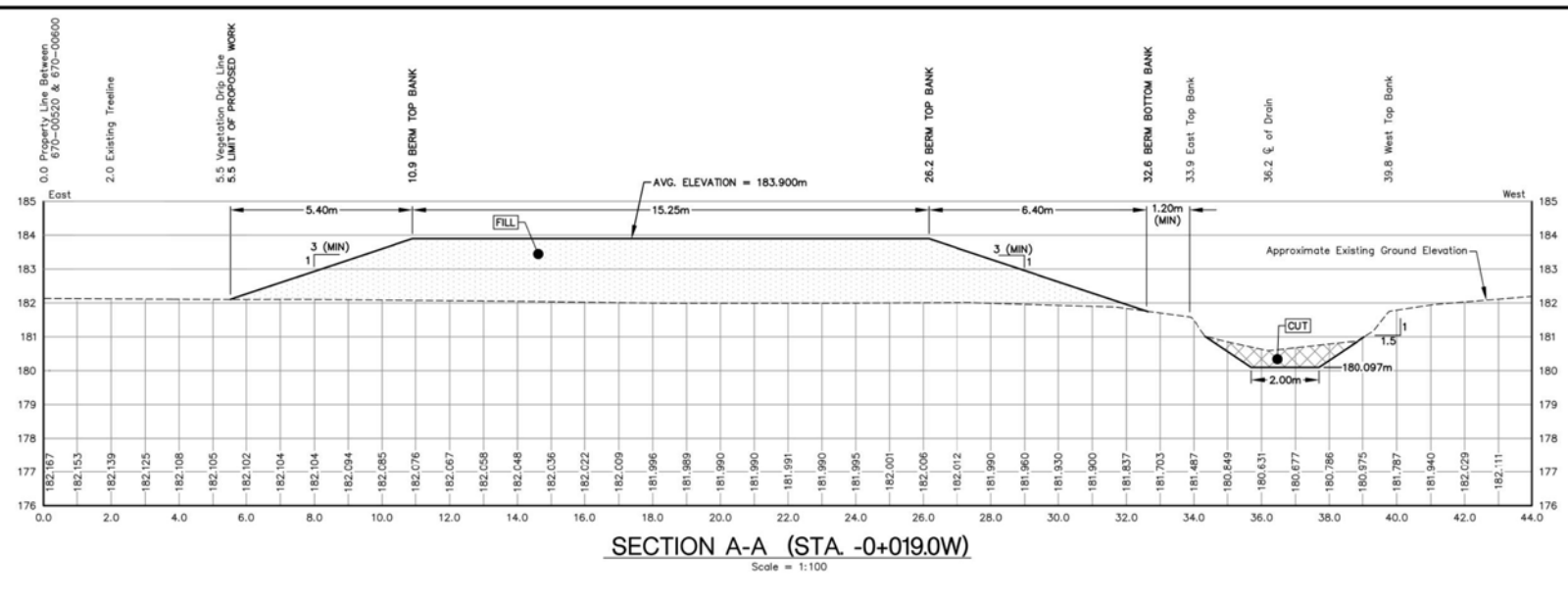
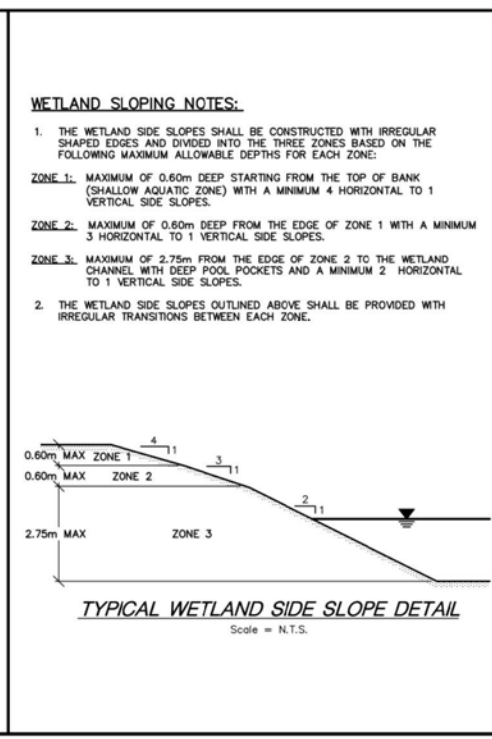
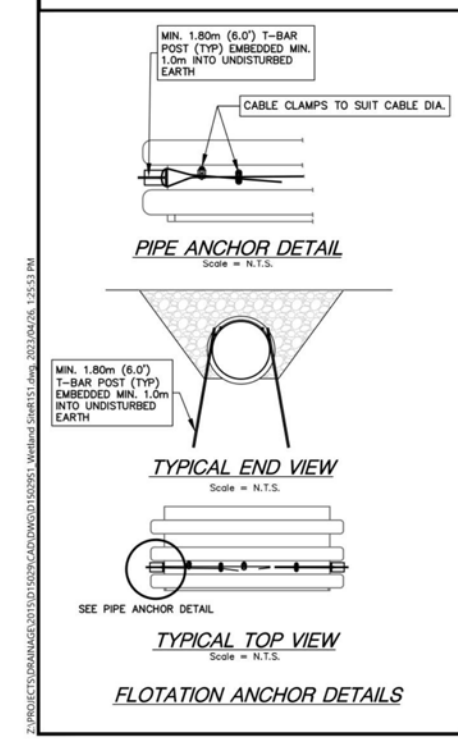
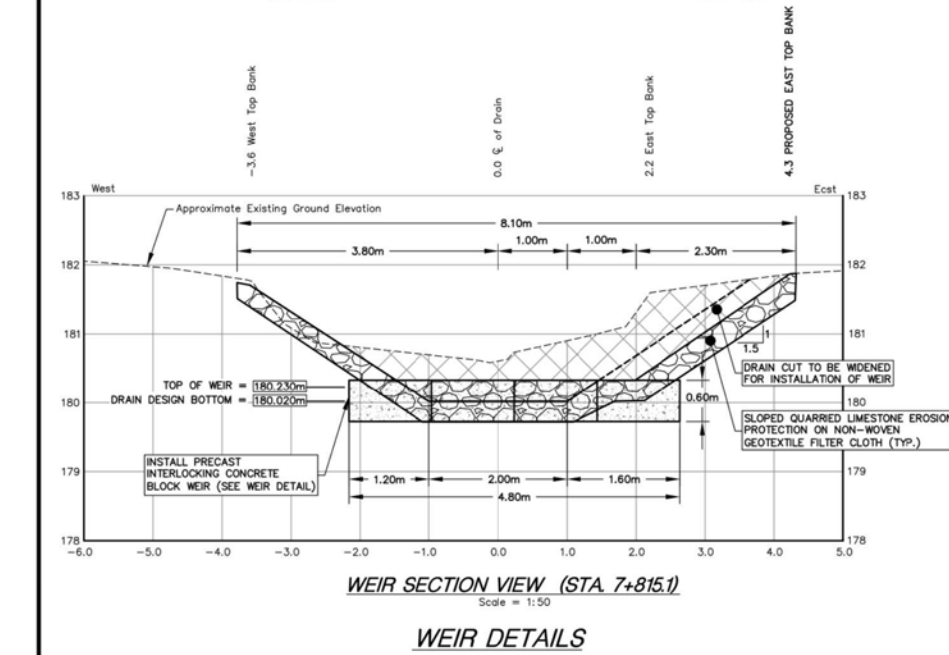
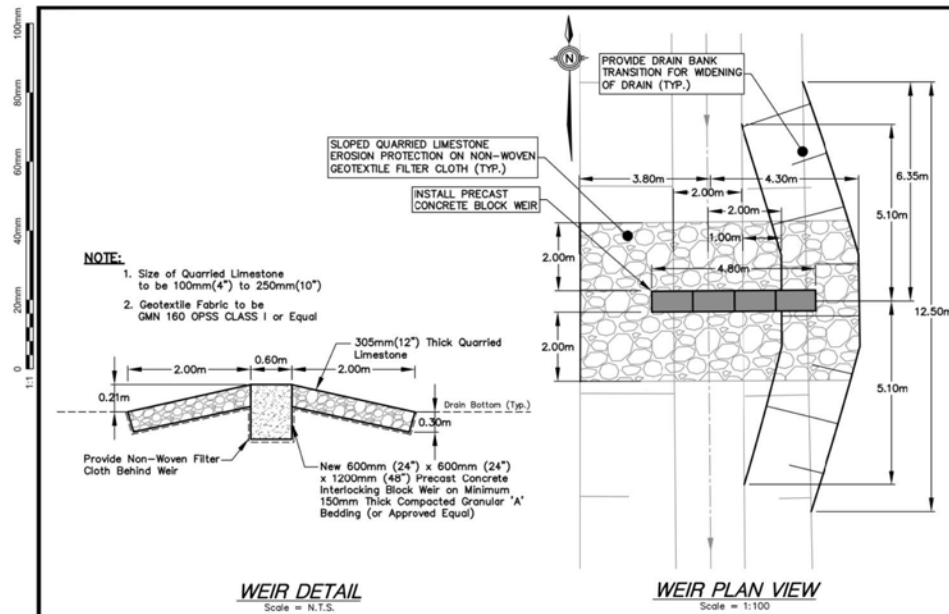
45 Division Street North
Kingville, ON
N9Y 1E1 Canada
P: 519-733-6587
F: 519-733-6588
peraltaengineering.com



DATE: APR 28, 2023

DESIGNED BY: A.B.P.
DRAWN BY: K.D.S./M.J.S.
CHECKED BY: A.B.P.

PROJECT No.: D15-029
SHEET No.: W1 OF W2



- GENERAL NOTES:**
- THE ACCURACY OF THE UTILITIES SHOWN ON THESE DRAWINGS ARE NOT GUARANTEED BY THE OWNER OR M. J. PERALTA ENGINEERING LTD. OTHER UTILITIES MAY BE PRESENT ON THE UTILITIES SHOWN MAY DIFFER IN SIZE OR LOCATION SHOWN.
 - ALL DIMENSIONS SHOWN IN METERS UNLESS NOTED OTHERWISE. PROPERTY LINES ARE BASED ON THE MUNICIPALITY OF LEAMINGTON GIS DATA.
 - CONTRACTOR WILL BE REQUIRED TO CONTACT AND IDENTIFY ANY INTERFERED LATERAL FLEES UPSTREAM OF THE NEW DRAINAGE SYSTEM.
 - TOPSOIL SHALL BE PLACED ON ALL NEWLY EXCAVATED SIDE SLOPES AND DISTURBED AREAS THAT SHALL BE SEEDED AND MULCHED.

BENCHMARKS

1) TOP EAST END OF THE NORTH CONCRETE CURB OF THE MERSEA ROAD 5 BRIDGE CROSSING OVER THE LEBEO CREEK DRAIN.
 ELEV. = 183.336m

Licensed Professional Engineer
 A. B. PERALTA
 100138683
 PROVINCE OF ONTARIO

Peralta Engineering
 N.J. Peralta Engineering Ltd.
 Consulting Engineers
 45 Division Street North
 Kingville, ON
 N0Y 1E1, Canada
 P: 519-733-6587
 F: 519-733-6588
 peraltaengineering.com

DATE: APR 28, 2023

DESIGNED BY: A.B.P.	DRAWN BY: K.D.S./M.J.S.	CHECKED BY: A.B.P.	PROJECT No.:	SHEET No.:
			D15-029	W2 of W2

Z:\PROJECTS\DRAINAGE\2015\15029\CADD\DWG\15029S1.dwg, 2023/04/26, 1:25:53 PM

This page has been intentionally left blank