



Municipality of
Leamington
live | play | work



Municipal Stormwater Management System 033-S701 2025 Annual Report

Submitted to:
Ontario Ministry of the Environment, Conservation and Parks
April 2026

Table of Contents

	Page
1.0 System Description	1
2.0 Monitoring Data	1
2.1 Stormwater Management Ponds	1
2.2 Stormwater Pump Stations	3
2.3 Spills	3
3.0 Operating Problems & Corrective Actions	3
4.0 Calibration, Inspection, Maintenance and Repair Summary	3
5.0 Complaints	4
6.0 Notice of Modifications to Sewage Works	4
7.0 Significant Drinking Water Threat Assessment Report for Proposed Alterations – Storm Management System	5

Appendices

Appendix A	2025 Stormwater Pond Monitoring Data
Appendix B	2025 Stormwater Management Facility Inspections
Appendix C	2025 Flushing and Maintenance Records
Appendix D	2025 Storm Sewer and Pump Station Repairs
Appendix E	2025 Complaints
Appendix F	Stormwater System Infrastructure Map
Appendix G	2025 Significant Drinking Water Threat Assessment Report for Proposed Alterations – Storm Management System

1.0 System Description

This report was prepared to summarize The Corporation of the Municipality of Leamington Municipal Stormwater Management System operations. This report is being submitted to the Ontario Ministry of the Environment, Conservation and Parks (MECP) to satisfy the requirements of the Consolidated Linear Infrastructure Environmental Compliance Approval (CLI-ECA) 033-S701, Issue Number 2, dated July 19, 2024.

The Municipality of Leamington Stormwater Management System consists of a series of storm sewers, culverts, ditches, municipal drains, stormwater management facilities, pump stations and outlets. Stormwater management facilities include wet and dry ponds, low impact developments (LID) and oil and grit separators (OGS).

Table 1 provides a summary of the stormwater management system infrastructure:

Table 1: Stormwater Management Infrastructure

Infrastructure Type	Quantity
Storm Sewers	79.51 km
Storm Forcemain	0.43
Ditches/Swales	1851.8 km
Pump Stations	3
LID Facilities	4
Wet Pond	4
Dry Pond	4
OGS	3

2.0 Monitoring Data

2.1 Stormwater Management Ponds

Leamington maintains eight (8) stormwater management ponds. Based on previous ECA monitoring requirements, sampling and analysis was only completed for the East Side Arterial Road Pond in 2025. Pond samples were collected monthly between April and November and included three (3) samples in Sturgeon Creek (upstream of the pond outlet, at the pond outlet and downstream of the pond outlet) and three (3) samples in the pond (inlet, midpoint and outlet). 2025 data is provided in **Appendix A**.

The remaining stormwater management facilities were not sampled during the 2025 reporting period as the MECP sampling and monitoring guidance for stormwater management systems has not been released yet.

The stormwater management pond locations are shown in Figure 1.

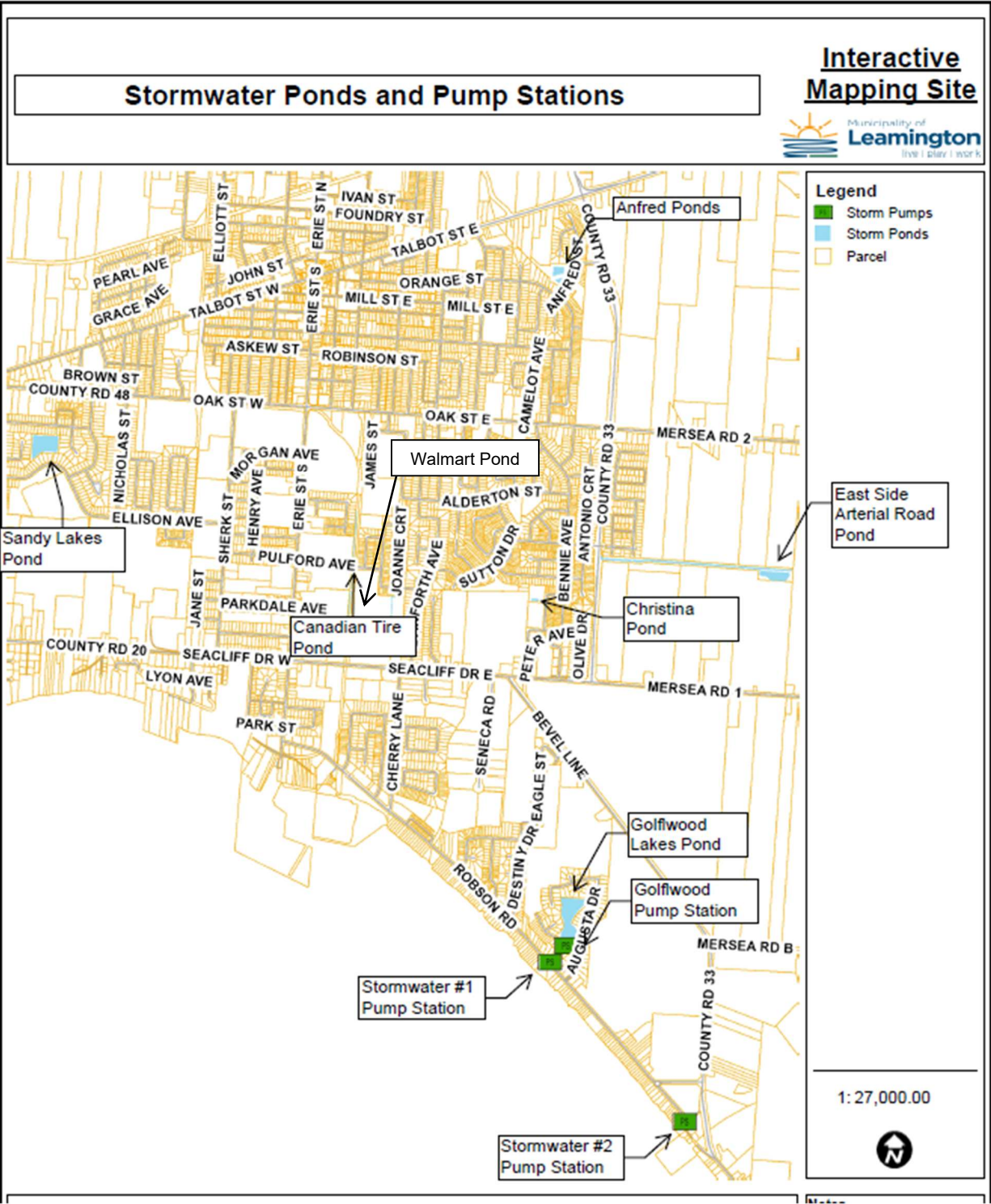


Figure 1: Stormwater Pond and Pump Station Locations

2.2 Stormwater Pump Stations

The stormwater system includes three (3) stormwater pump stations as shown in Figure 1. All storm pump stations are equipped with one submersible pump and a local control panel that communicates to the Leamington Pollution Control Centre (LPCC) via cellular network. Pump station remote monitoring includes pump status, wet well levels and alarms. No sampling was completed for the storm pump stations in 2025.

2.3 Spills

No spills were reported to MECP in 2025.

3.0 Operating Problems & Corrective Actions

There were no major operating problems in 2025. Repairs and corrective actions taken are highlighted in **Appendix D**.

4.0 Calibration, Inspection, Maintenance and Repair Summary

Calibration

There are no stormwater management monitoring instruments in place in the Municipality that require calibration. No calibration was completed in 2025.

Inspections

Stormwater management facilities, including ponds and low impact development facilities, are inspected annually. A copy of a blank inspection form and summary of inspection findings is provided in **Appendix B**.

Pump stations are inspected weekly and work orders are tracked using the *Allmax Antero* computerized maintenance program. Control panels are inspected annually. Table 2 outlines the activities performed at the pump stations on a routine basis. Example work orders are provided in **Appendix B**.

Table 2: Pump Station Inspection Activities

Inspection Type	Activities Performed
Weekly	<ul style="list-style-type: none">• Visual inspection of above ground equipment, hatches, control panel, conduit, concrete, access, landscaping, etc.• Inspect, clean and operate float balls• Inspect wet well• Test run pump• Record pump hours and other data or observations

	<ul style="list-style-type: none"> • Check alarm log or operation history, where equipped on local HMI • Test all station alarms
Annual	<ul style="list-style-type: none"> • Operate valves and pump (Golfwood) • Control panel inspection by external contractor

Maintenance

The Municipality completes storm sewer flushing as required and as identified by infrastructure services inspectors. Oil grit separators and storm pump stations are cleaned annually. **Appendix C** includes a summary of 2025 maintenance activities.

Repairs

In addition to routine preventative maintenance, various repairs were completed on the linear infrastructure and pump stations in 2025. A summary of all repairs is provided in **Appendix D**.

5.0 Complaints

Complaints received online or through customer service representatives are entered and tracked through the municipal CityWorks and CityWide software platforms. Additional complaints received by the Infrastructure Services Inspectors are tracked separately in a Sewer Log. A copy of all 2025 complaints, including follow up actions, is provided in **Appendix E**.

6.0 Notice of Modifications to Sewage Works

In 2025, the following modifications were made to the storm works:

- Erie Outfall Relocation – a new 1350 mm storm sewer, concrete structures, and manual control gate were installed and connected to the existing storm sewer on Erie Street South. The project included relocating the existing storm sewer outlet from the west side of the Leamington Ferry Terminal to the east side. The Director Notification is attached in **Appendix F**.

The 2025 stormwater system map showing all linear infrastructure is provided in **Appendix F**. Additionally, tables E1 and E2, required by the CLI ECA #033-S701, Schedule E, Section 9.0 are included in **Appendix F**. These tables summarize the catchment area, receiver, total number of outlets to the environment and stormwater management level for each sewershed.

7.0 Significant Drinking Water Threat Assessment Report for Proposed Alterations – Storm Management System

In 2025 the Municipality of Leamington prepared a Significant Drinking Water Threat Assessment Report for each completed and ongoing alteration to the Authorized System as per Schedule E, Section 8.0 of the CLI-ECA #033-S701. There were no significant drinking water threats found and therefore no design considerations or mitigation measures were necessary. This report can be found in **Appendix G**.

Appendix A
2025 Stormwater Pond Monitoring Data



East Side Arterial Road Pond Concentrations

Sample Date	TSS	TDS	TP	OrthoP	NO3	NO2	NH4-N	E.Coli	Conductivity	Temp	pH
	(mg/L)	(mg/L)	(mg/L)	(mg/L)	(mg/L)	(mg/L)	(mg/L)	(cfu/100mL)	(µmho/cm)	(°C)	
Pond #1 - Pond Inlet											
Apr 14, 2025	16	495	0.073	0.022	1.91	0.028	<0.05	3	900	12.7	8.23
May 12, 2025	23	425	0.091	<0.01	1.13	0.059	<0.05	1	760	16	8.87
Jun 5, 2025	10	365	0.073	0.033	<0.1	<0.01	0.068	6	730	20.7	8.57
Jul 17, 2025	12	405	0.18	0.095	<0.5	0.012	0.084	2600	670	24.2	7.4
Aug 20, 2025	23	290	0.17	0.023	<0.5	<0.01	<0.05	52	640	23.4	7.54
Sep 25, 2025	11	320	0.24	0.18	<0.5	<0.01	<0.05	3200	630	21.3	7.51
Oct 23, 2025	11	340	0.16	0.047	<0.5	<0.01	<0.05	5	670	11.6	7.89
Nov 26, 2025	<10	405	0.056	0.022	<0.1	<0.01	0.18	6	700	7.6	7.51
Pond #2 - Mid-Point of Pond											
Apr 14, 2025	11	425	0.062	0.025	1.99	0.026	0.054	1	910	12.8	8.25
May 12, 2025	10	450	0.062	0.014	1.3	0.055	<0.05	1	760	15.8	8.83
Jun 5, 2025	<10	370	0.067	0.028	<0.1	<0.01	0.05	9	740	20.4	8.65
Jul 17, 2025	13	410	0.12	0.062	<0.5	<0.01	<0.05	2400	700	24.4	7.5
Aug 20, 2025	30	305	0.14	0.011	<0.5	<0.01	<0.05	200	640	23.4	7.56
Sep 25, 2025	14	345	0.2	0.16	<0.5	<0.01	<0.05	4600	620	21.1	7.64
Oct 23, 2025	99	345	0.13	0.048	<0.5	<0.01	<0.05	4	670	11	7.79
Nov 26, 2025	12	390	0.043	0.02	<0.1	<0.01	0.26	2	690	6.5	7.65
Pond #3 - Pond Outlet											
Apr 14, 2025	13	485	0.07	0.023	1.95	0.027	<0.05	3	900	13	8.22
May 12, 2025	13	455	0.067	0.019	1.36	0.01	<0.05	3	750	15.8	8.82
Jun 5, 2025	<10	395	0.075	0.018	<0.1	<0.01	0.057	0	740	20.5	8.66
Jul 17, 2025	14	400	0.17	0.1	<0.5	0.016	<0.05	3200	670	23.9	7.4
Aug 20, 2025	21	295	0.16	0.018	<0.5	<0.01	<0.05	26	640	23.2	7.61
Sep 25, 2025	<10	345	0.21	0.16	<0.5	<0.01	<0.05	470	660	21.1	7.67
Oct 23, 2025	11	370	0.14	0.046	<0.5	<0.01	<0.05	4	670	10.6	7.97
Nov 26, 2025	98	375	0.13	0.011	<0.1	<0.01	0.23	30	690	6.4	7.82

Sturgeon Creek Concentrations											
Sample Date	TSS	TDS	TP	OrthoP	NO3	NO2	NH4-N	E.Coli	Conductivity	Temp	pH
	(mg/L)	(mg/L)	(mg/L)	(mg/L)	(mg/L)	(mg/L)	(mg/L)	(cfu/100mL)	(µmho/cm)	(°C)	
Creek #1 - Upstream of Pond Discharge											
Apr 14, 2025	<10	525	0.87	0.74	10.5	0.08	<0.05	1500	1200	13.5	8.28
May 12, 2025	<10	810	1.2	0.99	14.1	0.577	0.16	5500	1300	13.6	8.28
Jun 5, 2025	80	465	0.8	0.68	7.48	0.383	0.35	4500	840	18.1	8.1
Jul 17, 2025	76	315	0.82	0.61	7.48	0.14	0.23	5600	470	23	7.8
Aug 20, 2025	27	290	1	0.97	11.2	0.124	0.051	12000	620	21.3	7.92
Sep 25, 2025	18	380	0.6	0.63	14.2	0.148	14.3	1800	560	19.8	7.83
Oct 23, 2025	<10	535	1.2	1.1	23.9	0.141	0.11	3900	860	9.9	7.89
Nov 26, 2025	17	390	0.75	0.58	6.59	0.102	0.096	2000	650	7.9	7.86
Creek #2 - At Pond Discharge											
Apr 14, 2025	14	485	0.32	0.22	4.31	0.04	<0.05	300	980	13.5	8.3
May 12, 2025	<10	690	0.76	0.66	9.75	0.38	0.11	3000	1100	14.6	8.36
Jun 5, 2025	35	500	0.82	0.68	7.37	0.324	0.37	3100	840	18.3	7.98
Jul 17, 2025	73	320	0.81	0.61	7.47	0.142	0.21	8800	470	23.1	7.8
Aug 20, 2025	25	320	0.98	0.9	10.6	0.116	0.085	14000	620	21.6	7.78
Sep 25, 2025	26	345	0.61	0.62	13.1	0.141	13.3	2200	570	19.9	7.86
Oct 23, 2025	29	340	0.2	0.068	0.27	<0.01	<0.05	160	680	11.2	8.23
Nov 26, 2025	15	370	0.66	0.5	5.67	0.089	0.12	130	660	7.6	7.97
Creek #3 - Downstream of Pond Discharge											
Apr 14, 2025	<10	540	0.95	0.78	10.8	0.076	<0.05	1100	1200	14.1	8.28
May 12, 2025	13	825	1.1	1	13.9	0.496	0.13	690	1300	14	8.37
Jun 5, 2025	45	550	0.76	0.69	7.47	0.332	0.36	3300	890	18.4	7.97
Jul 17, 2025	82	305	0.82	0.6	7.34	0.14	0.24	7300	470	23	7.8
Aug 20, 2025	26	325	0.99	0.92	10.6	0.117	<0.05	4800	620	21.6	7.98
Sep 25, 2025	28	345	0.59	0.61	13.4	0.141	13.5	3100	560	19.9	7.88
Oct 23, 2025	<10	570	1.4	1.2	24.5	0.158	0.07	2500	880	10.4	8.15
Nov 26, 2025	15	385	0.75	0.57	6.42	0.1	0.089	2100	650	8.1	7.93

Pond Sampling Comments

Sample Date	Comment
Apr 14, 2025	Pond discharging 1/8 of pipe
May 12, 2025	Pond discharging 1/16 of pipe
Jun 5, 2025	Pond discharging 1/16 of pipe
Jul 17, 2025	Pond discharging 1/8 of pipe
Aug 20, 2025	Pond discharging 1/8 of pipe
Sep 25, 2025	Pond discharging 1/8 of pipe
Oct 23, 2025	Pond discharging 1/8 of pipe
Nov 26, 2025	Pond discharging 1/16 of pipe

May 12 2025

METALS	UNITS	Pond1	Pond2	Pond3	Creek1	Creek2	Creek3
Mercury (Hg)	ug/L	<0.1	<0.1	<0.1	<0.1	<0.1	<0.1
Aluminum (Al)	ug/L	250	270	290	82	160	160
Antimony (Sb)	ug/L	<0.5	<0.5	<0.5	<0.5	<0.5	<5
Arsenic (As)	ug/L	1.3	1.4	1.3	1.9	1.9	2.2
Barium (Ba)	ug/L	29	30	31	71	61	71
Beryllium (Be)	ug/L	<0.4	<0.4	<0.4	<0.4	<0.4	<0.4
Bismuth (Bi)	ug/L	<1	<1	<1	<1	<1	<1
Boron (B)	ug/L	23	24	23	120	93	120
Cadmium (Cd)	ug/L	<0.09	<0.09	<0.09	0.14	<0.09	0.16
Calcium (Ca)	ug/L	59,000	58,000	58,000	130,000	110,000	130,000
Chromium (Cr)	ug/L	<5	<5	<5	<5	<5	<5
Cobalt (Co)	ug/L	<0.5	<0.5	<0.5	1.3	1	1.4
Copper (Cu)	ug/L	11	5.3	7.5	9	8.8	7.6
Iron (Fe)	ug/L	260	270	300	240	280	350
Lead (Pb)	ug/L	<0.5	<0.5	<0.5	<0.5	<0.5	<0.5
Lithium (Li)	ug/L	<5	<5	<5	5.2	<5	5
Magnesium (Mg)	ug/L	14,000	15,000	14,000	25,000	23,000	26,000
Manganese (Mn)	ug/L	25	30	27	52	47	55
Molybdenum (Mo)	ug/L	4.3	4.4	4.2	20	15	21
Nickel (Ni)	ug/L	1.1	1.3	1.4	13	9.8	13
Potassium (K)	ug/L	6,100	5,800	5,800	38,000	27,000	38,000
Selenium (Se)	ug/L	<2	<2	<2	<2	<2	<2
Silicon (Si)	ug/L	1,500	1,600	1,600	2,400	2,300	2,600
Silver (Ag)	ug/L	<0.09	<0.09	<0.09	<0.09	<0.09	<0.09
Sodium (Na)	ug/L	68,000	69,000	70,000	84,000	82,000	84,000
Strontium (Sr)	ug/L	720	730	720	780	800	790
Tellurium (Te)	ug/L	<1	<1	<1	<1	<1	<1
Thallium (Tl)	ug/L	<0.05	<0.05	<0.05	<0.05	<0.05	<0.05
Tin (Sn)	ug/L	<1	<1	<1	<1	<1	<1
Titanium (Ti)	ug/L	9	8.5	8.2	5.6	5.2	9.5
Tungsten (W)	ug/L	<1	<1	<1	<1	<1	<1
Uranium (U)	ug/L	2.1	2.3	2.2	4.5	3.8	4.6
Vanadium (V)	ug/L	1.5	1.4	1.6	1.1	1.5	1.4
Zinc (Zn)	ug/L	16	8	110	33	26	34
Zirconium (Zr)	ug/L	<1	<1	<1	<1	<1	<1

August 20 2025

METALS	UNITS	Pond1	Pond2	Pond3	Creek1	Creek2	Creek3
Mercury (Hg)	ug/L	<0.1	<0.1	<0.1	<0.1	<0.1	<0.1
Aluminum (Al)	ug/L	77	64	94	320	280	330
Antimony (Sb)	ug/L	<0.5	<0.5	<0.5	<0.5	<0.5	<0.5
Arsenic (As)	ug/L	2.6	2.3	2.4	2.2	2.1	2.1
Barium (Ba)	ug/L	33	30	32	43	40	40
Beryllium (Be)	ug/L	<0.4	<0.4	<0.4	<0.4	<0.4	<0.4
Bismuth (Bi)	ug/L	<1	<1	<1	<1	<1	<1
Boron (B)	ug/L	41	37	51	90	89	84
Cadmium (Cd)	ug/L	<0.09	<0.09	<0.09	<0.09	<0.09	<0.09
Calcium (Ca)	ug/L	50,000	49,000	50,000	59,000	57,000	57,000
Chromium (Cr)	ug/L	<5	<5	<5	<5	<5	<5
Cobalt (Co)	ug/L	<0.5	<0.5	<0.5	1	0.87	0.91
Copper (Cu)	ug/L	1.5	1.1	1.4	5.6	5.1	5.6
Iron (Fe)	ug/L	280	210	280	680	450	630
Lead (Pb)	ug/L	<0.5	<0.5	<0.5	0.6	<0.5	0.52
Lithium (Li)	ug/L	<5	<5	<5	<5	<5	<5
Magnesium (Mg)	ug/L	13,000	13,000	12,000	13,000	13,000	13,000
Manganese (Mn)	ug/L	240	150	250	38	36	41
Molybdenum (Mo)	ug/L	4.3	4.1	4.1	18	17	17
Nickel (Ni)	ug/L	1.2	1.1	1.3	7.6	6.8	6.7
Potassium (K)	ug/L	7,300	7,000	7,300	23,000	23,000	21,000
Selenium (Se)	ug/L	<2	<2	<2	<2	<2	<2
Silicon (Si)	ug/L	1,100	1,000	1,200	3,700	3,600	3,500
Silver (Ag)	ug/L	<0.09	<0.09	<0.09	<0.09	<0.09	<0.09
Sodium (Na)	ug/L	60,000	54,000	55,000	33,000	31,000	30,000
Strontium (Sr)	ug/L	760	680	680	520	480	470
Tellurium (Te)	ug/L	<1	<1	<1	<1	<1	<1
Thallium (Tl)	ug/L	<0.05	<0.05	<0.05	<0.05	<0.05	<0.05
Tin (Sn)	ug/L	<1	<1	<1	<1	<1	<1
Titanium (Ti)	ug/L	<5	5.3	5.8	11	8.8	10
Tungsten (W)	ug/L	<1	<1	<1	<1	<1	<1
Uranium (U)	ug/L	0.9	0.78	0.86	1	0.94	0.93
Vanadium (V)	ug/L	1.2	1.1	1.2	1.9	1.8	1.9
Zinc (Zn)	ug/L	80	17	23	52	45	45
Zirconium (Zr)	ug/L	1.7	<1	<1	<1	<1	<1

Appendix B
2025 Stormwater Management Facility Inspections



Stormwater Management Pond Maintenance Schedule Template

Pond Name:

Anfred North Golfwood
 Anfred South Sandy Lakes
 Canadian Tire Walmart
 Christina
 ESAR

Description:

- Wet Retention Pond
- Dry Pond with Sturgeon Creek Drain
- Dry Pond
- Wet Pond
- Swale Pond
- Detention Pond

Inspector:

Date:

No.	Task	Notes/Recommendations	Pass	Fail
1	Inspect the inlet and outlet pipe for structural integrity			
2	Inspect RIP RAP			
3	Inspect for Trash or other debris blocking inlet, outlet or spillway			
4	Inspect storm system and catchbasins upstream from pond			
5	Inspect for sediment at the inlet pipes			
6	Sediment accumulation in pond			
7	Is pond functioning properly			
8	Inspect basin for signs of chemicals (solvents, gas, diesel, paint, natural gas).			
9	Inspect side slopes, berms and spillway			
10	Inspect vegetation cover on slopes or invasive species: purple loosestrife, phragmites, buckthorn, honeysuckle etc..			
11	5 to 7.5 meter "no mow" chemical free zone around pond edge. Mowed once a year only			

2025 Stormwater Management Facility Inspections

Date	SWM Inspected	Comments/Follow up
31-Mar-25	Anfred North Pond	Pond was found to have minor debris at inlet grate and trash and debris in catch basins near northwest end. Southern outlet has dirt in it, the catch basins were surcharged during the inspection and the grass had been cut around the pond.
31-Mar-25	Anfred South Pond	Pond was found to have minor debris and trash in catch basin. Basin was surcharged and settlement at outlet was observed.
7-Apr-25	Golfwood Pond	Pond was found to have minor washout at manhole near northwest corner and mowed grass behind houses on Augusta Drive.
7-Apr-25	Canadian Tire Pond	Pond was found to have debris blocking the inlet and outlet. Sediment had clogged the pond causing it to slowly drain which required pond cleaning. Blockages were removed. Riprap failure was observed exposing wires from cage, and an unknown sheen was present in the water. Ruts and washout had occurred along side slopes and some phragmites and cattails were observed.
7-Apr-25	Christina Pond	Pond was found to have trash and sediment accumulation in it, and an unknown sheen was present. Slopes were failing and washout was observed. Fence was broken on west side entrance and grass had been mowed. Fence was repaired.
7-Apr-25	ESAR Pond	Pond was found to have settlement, sticks and branches at inlet. Outlet pipe had potentially collapsed, restricting flow. Upon further inspection outlet was found to not be damaged and running well. Settlement and washout were present along the banks, some phragmites observed and grass was mowed around the pond.
7-Apr-25	Kinsmen Ball Diamonds	Pond was found to be missing gabion stone cover on top of CSP pipe off Carolina Woods Cres. near catch basin. Some vegetation was present, holding water at north end.
7-Apr-25	Ellison and Sherk LID	Pass all inspections.
7-Apr-25	Queens Hill LID	Pass all inspections.
7-Apr-25	Sandy Lakes Pond	Pond was found to have north and south inlet grate broken. Vegetation and debris was blocking western inlet. Minor sinkholes were observed along the east side of the pond. Phragmites was present in north and west side of the pond and grass was mowed around the pond.
7-Apr-25	Walmart Pond	Pond was found to have debris and trash and riprap failure at the retaining wall with exposed and broken wire. Sediment was observed along pond causing it to drain slowly. Unknown sheen in water observed. Berm failure and some phragmites observed.

Work History Report

Date Range: 1-1-1753 - 12-31-9999

WO# 568 Date Completed 4-11-2025 Completed By
 Work Type Scheduled Work Priority Moderate
 Equipment PS-GW - Golfwood Lakes Pump Station
 Task PS-Y-INSP Golfwood SWPS Yearly Inspection

Task Instructions

The following tasks are to complete annual inspection of the Golfwood Storm Water Pump Station.

If you are unsure of the tasks or specific safety requirement(s), discuss with your Supervisor and JHSC (for safety related items) first. Follow all Plant SOPs. Lockout equipment where required. Any comments shall be noted on the Work Order. Sign and date once the tasks are completed.

- Refer to the operating manual for the equipment as needed maintenance, general information, and troubleshooting tips.

Once per year perform the following on Golfwood Pump Station:

- Install valve wheels for the 450mm maintenance sluice valve (main drain) and the 300mm inflow sluice gate valve (pond overflow to the wet well).
 - The valve wheels should be located in cabinet.
- Check the valve stem, lightly lubricate with grease or a small amount of lubricant spray.
- Open the 450mm valve to the station and then close the valve back to its normal position.
 - Opening this valve allows the pond to drain and introduces a lot of flow to the station.
 - Flow should equalize to the inflow sluice gate level.
 - Monitor levels as required and adjust valve accordingly.
- Close the 300 inlet overflow valve to the station and open back to normal.
- With one operator at the Robson Road discharge across from Stormwater #1, and one operator at the Golfwood pump (with flow in the station wet well):
 - Start the Golfwood pump.
 - Ensure flow discharges properly to the discharge point.
 - If more flow is needed to pump, gently open the 450mm valve slightly to introduce flow to the station for the pump.
 - Close the 450mm valve if it needed to be opened.
 - Where possible, note the operation of the inverted duck bill to see if it is opening and closing as intended.
 - It might not be possible to see it depending on lake levels.
- Check the general condition of the site. Look for signs of damage or items in need of repair for the wet well, hatches, stairs, vent pipes, and electrical panel.
- Ensure station is back to normal and valve handles are removed and stored.

Completed Notes

Labor

Class	Account	Employee	Est. Hours	Actual Hours	Cost
MM - Maintenance Mechani	Facility Maintenance		1.00		\$0.00
ASP - Assistant Plant Operat	Facility Maintenance		1.00		\$0.00
Labor Total					\$0.00
WO # 568 Total					\$0.00
Report Total					\$0.00

Work History Report

Date Range: 1-1-1753 - 12-31-9999

WO# 521 Date Completed 4-3-2025 Completed By
 Work Type Scheduled Work Priority Low
 Equipment PS-ALL - All Pumping Stations
 Task PS-WKLY-INSP Weekly Pump Station Inspection

Task Instructions

The following tasks are to complete building water pipe and valve inspections.

If you are unsure of the tasks or specific safety requirement(s), discuss with your Supervisor and JHSC (for safety related items) first. Follow all Plant SOPs. Lockout equipment where required. Any comments shall be noted on the Work Order. Sign and date once the tasks are completed.

- Blank Weekly Pump Station Inspection sheets can be found in the Plant Data folder.
- Confined Space procedures and policies must be followed. Portable gas detector required to test spaces before continuing inspections
- Notify Plant Operator or Administration staff before testing the alarms.
 - Where possible, have Security One call you with the alarm, or carry the Plant Operator/On Call Phone phone.
 - Alarms text to the Plant Operator/ On Call Phone within the first 5 minutes of activation, after 5 minutes the alarms go to Security One and they will call following the contact list.

To complete the inspection for all pumping stations:

1. Review eRIS Weekly Pump Station report to view hours to identify any issues with run times.
 - Check for any pump station issues as noted in the WW Collection Logbook.
2. Inspect operation of all float balls to ensure they are not tangled or full of debris that would affect operation.
 - All floats should always physically checked each week to be free of buildup to prevent false alarms or improper pump operation that would cause them to run excessively.
 - Activate all float ball alarms and verify they are activated properly on the Plant SCADA and through Security One.
4. Record all pump hours.
5. Inspect wet well and observe for excessive buildup from grease or debris.
 - Clean out of wet well should be scheduled as needed.
6. Where equipped, rotate the duty pumps.
7. Where equipped, checked the Metering Chamber for excessive leaks or other concerns.
 - Test metering chamber floats where equipped.
8. Test run each pump.
 - Where equipped, note the flow of the pump through the flowmeter.
 - While pump is in operation, check for anything unusual that may need further inspection.
9. After inspection, ensure all pumps are returned to Auto as able and any alarms are reset at the station or on SCADA.
10. Ensure all lids, control panels, doors, and fencing are locked and secured.
11. Once completed, enter pump hours into spreadsheet and verify that they look to be running normally.
 - Any pumps with unusual run hours should be investigated further to avoid damages.

Completed Notes

Labor

Class	Account	Employee	Est. Hours	Actual Hours	Cost
SO - Spare Operator or as A	Facility Maintenance		6.00		\$0.00
MM - Maintenance Mechani	Facility Maintenance		6.00		\$0.00
Labor Total					\$0.00
WO # 521 Total					\$0.00

Appendix C
2025 Flushing and Maintenance Records



2025 Storm Sewer Flushing

Date	Location	Issue/Resolution	Sewer Type
31-Jan-25	4 Bruce	Flushed laterals as they are full of debris	STM
30-Jul-25	Danforth	Flush Selkirk and OGS and syphon on Danforth	STM

2025 Oil Grit Separator Cleaning

Date	OGS Cleaned
30-Jul-25	Woodsit
	Peter St
	Destiny Dr

2025 Pump Station Cleanouts

Date	Pump Station Cleaned
10-Jun-25	Stormwater #2
9-Jul-25	Stormwater #1
	Golfwood Lakes

Appendix D
2025 Storm Sewer and Pump Station Repairs



2025 Storm Sewer Repairs

Date	Address	Issue	Repair	Sewer Type
6-Jan-25	2 Kimball	Catch basin not working properly and flooding road, full of debris	Advised Public Works to clean out basin	STM
28-Apr-25	Fox and White	Storm sewer repairs	Pheonix Drainage on site for catch basin and lateral install for alley between Fox and White	STM
8-May-25	Mersea Rd 4	Broken catch basin lid	Sent to Drainage for repairs	STM
11-Jun-25	Robson Rd	Duck bill replacement project for Stormwater #2 pump station	Divers reinstalled outfall grate in channel at the end of Robson Rd	STM
9-Jul-25	20 Pearl	Sinkhole noted at address, top of catch basin needs to be parged	Sent CB to Public Works for maintenance	STM
23-Jul-25	Oak St	Storm sewer repairs	Repairing risers and installing new frames and covers for catch basins.	STM
24-Jul-25	Oak St	Storm sewer repairs	Installing new frame and covers for catch basins.	STM
25-Jul-25	Oak St	Storm sewer repairs	Installing new frame and covers for catch basins.	STM
25-Jul-25	Selkirk and Baird	Sinkhole located at catch basin at Selkirk and Baird (SW corner, near lateral from basin to main)	Checked basin and found offset joint. Advised Public Works of maintenance required	STM
7-Aug-25	19 James	Storm sewer repairs	Catch basin install and repair with water main project	STM
11-Aug-25	Oak St	Storm sewer repairs	Continuing repairs on catch basins and manholes on Oak St	STM
6-Oct-25	88 Victoria	Major Construction on site for sewer tie ins	10" STM connection installed and OGS manhole installed	STM
17-Oct-25	Sherman Ave	Damage to storm lateral line caused by Cogeco and Bell infrastructure	Deer Run Excavating repaired storm lateral line	STM

2025 Pump Station Repairs

Date	Pump Station	Repair Completed
10-Jun-25	Stormwater #2	Duckbill replaced
11-Jun-25	Stormwater #2	Float ball replaced

Appendix E
2025 Complaints



Storm Sewer CityWorks and CityWide Tickets

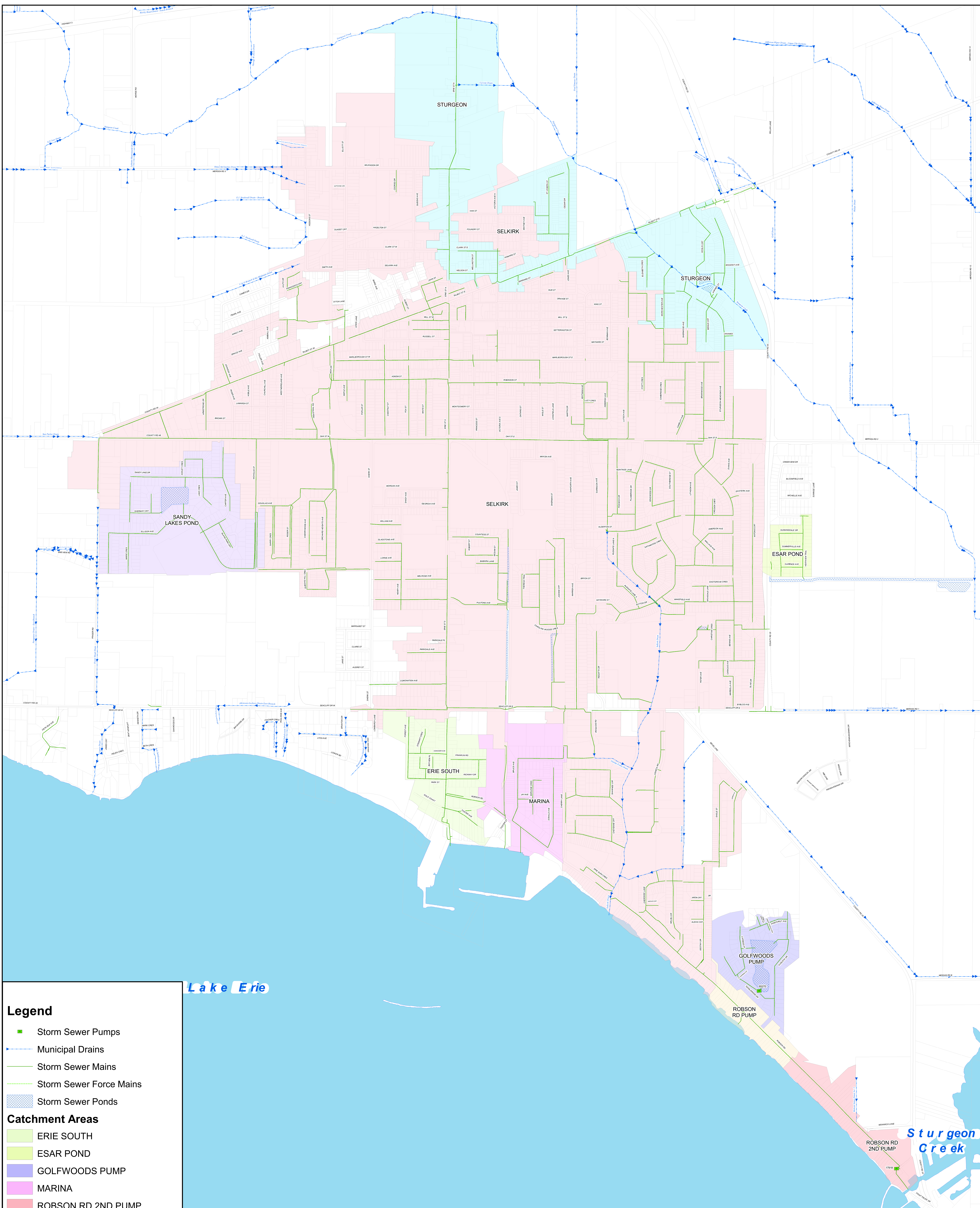
RequestID	Date Initiated	Description	Priority	Category	Dispatch To	Address	Status	Details	Comments
26800	2025-02-11 16:00	ENG - Drainage Information	3	DRAIN	NAJIM, DOMINIC	11 ONTARIO ST	CLOSED	Owner noticed that some of the storm drains go onto the lawn and some go into a pipe in the ground. They want to know if there is an alternative option or if he can put it into the ground.	
26836	2025-02-18 14:09	ENG - Drainage Information	3	DRAIN	STASKO, SHAWN	3677 CTY RD 31	CLOSED	Municipality completed work on the ditch in late 2024. There is a large hole remaining from the work. It was filled in loosely but has collapsed and the home owner has put twigs/branches in to try to fill it so they do not fall in it. However, they would like to see it repaired properly.	
27213	2025-04-03 08:30	ENG - Flooding General	1	DRAIN	NAJIM, DOMINIC	CYPRESS PT, LEAMINGTON, ON NOP, Canada	CLOSED	Heavy water lying in field between Cyprus Point and Destiny Drive. Water flowing south into yards of Robson Road. The lack of drainage in this field has been reported before. With more precipitation expected within the next few days, residential flooding can be anticipated. Please have owner of field rectify this asap.	
27250	2025-04-10 08:24	ENG - Plugged	1	DRAIN	STASKO, SHAWN	533 MERSEA RD 6	CLOSED	Standing water in front of her house. The water isn't going down the sewer.	
27407	2025-04-11 12:33	Sewer problem/backup	2	SEWER	NAJIM, DOMINIC	25 IVAN ST	CLOSED	A drain located in front of warehouse 1 is clogged with debris and there is a huge puddle of standing water. Truck drivers cannot exit their trucks when parked in this area to get loaded.	
27407	2025-04-28 10:57	Sewer problem/backup	2	SEWER	NAJIM, DOMINIC	64 DANFORTH AVE	CLOSED	Caller reported hole in their backyard that they believe to be related to the Selkirk Drain.	
SR-0972	2025-07-16 13:17	Eng-Sewers	Low	Engineering	BEZAIRE AREVALO, DANIEL	CAMEO DR	CLOSED	Cameo Dr is flooding, the water is coming onto his lawn and driveway.	Went to the site, sewer surcharge in area causing flooding on roads. Catch basins and mains are running. Mainline surcharge causing flooding to basins and road. Once system calmed down the road drained and cleared.
SR-0975	2025-07-16 13:21	Eng-Sewers	Low	Engineering	NAJIM, DOMINIC	22 WILKINSON DR	CLOSED	Sewer is not draining the water. Road is overflowing with water. Rejean says his sink is also overflowing with water.	Water rescinded after storm event.
SR-0976	2025-07-16 13:22	Eng-Sewers	Low	Engineering	NAJIM, DOMINIC	ANTONIO AND CLARENCE	CLOSED	Catch basin is blocked on northwest corner of intersection, street is flooding.	Contacted PW to clean out the catch basin, everything working after cleaning the CB.
SR-0977	2025-07-16 13:23	Eng-Sewers	Low	Engineering	NAJIM, DOMINIC	9 NOBLE AVE	CLOSED	Noble St flooding, sewer is backed up. There is 4 inches of water in the residents garage.	Water rescinded after storm event.
SR-0978	2025-07-16 13:24	Eng-Sewers	Low	Engineering	BEZAIRE AREVALO, DANIEL	13A LUTSCH	CLOSED	Corner of Lutsch and Orange, the drain is not keeping up with the rain and is overflowing.	Went to the site and checked MHs and CBs, all had cleared by the time the system calmed down. When the STM sewer surcharged it caused the CBs to fill with water and flood the road.
SR-0980	2025-07-16 13:46	Eng-Sewers	Low	Engineering	BEZAIRE AREVALO, DANIEL	18 KIMBALL AVE	CLOSED	Water is flooding on the street and is coming up their driveway. The drain is not keeping up.	Went to site and catch basins were draining but main had surcharged. Sewer surcharge could not keep up with the amount of rain in the short amount of time. Once the system had caught up, the road and basins drained. PW cleaned basins.
SR-0982	2025-07-16 13:53	Eng-Sewers	Low	Engineering	NAJIM, DOMINIC	10 CROZIER CRES	CLOSED	Water is pooling on the street, the drain is not draining at all. There is 10 inches of water sitting on top of the drain. He thinks in the future this drain should be investigated.	Water rescinded on road. Everything is working fine after storm event.
SR-0983	2025-07-16 14:03	Eng-Sewers	Low	Engineering	NAJIM, DOMINIC	237 ROBSON RD	CLOSED	The caller doesn't live at the property but was driving by. The rain is not draining and is almost going up the driveway of 237 Robson and is also getting to the other side of the street.	Contacted PW to clean out the catch basin in front of address.
SR-0984	2025-07-16 14:09	Eng-Sewers	Low	Engineering	NAJIM, DOMINIC	35 ASHLEY CRES	CLOSED	Resident called to report that for the first time, there is water running off the back lot of Wilkinson Electric and pooling in her yard. She is worried about an excess of water leading to a flood, she can be reached at 519-326-1749.	Possibly a private matter. Informed Liliana that we will still check the front of the lot of Wilkinson Electric. Water from a storm event caused back up in the parking lot which overflowed to the property at 35 Ashley. Talked to Wilkinson Electric about the issue and they will get the catch basin cleaned out for proper drainage. Lily called today asking if she can speak with the town staff that looked into this for her. She wants to know what happened when you spoke with Wilkinson Electric.
SR-1011	2025-07-17 16:07	Eng-Sewers	Low	Engineering	BEZAIRE AREVALO, DANIEL	219 TALBOT ST E	CLOSED	Meadowbrook Church having issues with the sewers backing up due to rainfall Thursday. They would like someone to inspect the situation as it is the town sewer causing the issue. Susan would be the main contact 226-346-7060, she believes others in the area were having the same issue.	STM sewer surcharge due to rain event July 16 2025. Mainline clear and flowing now.
SR-1165	2025-07-28 23:01	Eng-Sewers	Low	Engineering	NAJIM, DOMINIC	125 CAROLINA WOODS CRES	CLOSED	The storm water drain in between 125 Carolina Woods Crescent & 127 Carolina Woods Crescent is not functioning. Since May, it has always been overflowing. When the rain event is "light" the water backs up to the middle of the road. When the rain event is "heavy" the entire road fills up, and the town property in between those houses turns into a creek. In June we observed a town employee stop and look at the drain, nothing has changed. With every event the drain water situation begins to get worse. It is causing road safety issues with the traffic that frequents this area.	The catch basin was not draining. Cleaned out the basin and everything is draining
SR-1169	2025-07-29 08:32	Eng-Sewers	Low	Engineering	NAJIM, DOMINIC	239 ROBSON RD	CLOSED	During a storm event water backed up from sewer onto the road. This is the third time that it's happened.	STM basin was clogged with debris. PW cleaned the basin and it's running smooth.
SR-1171	2025-07-29 08:40	Eng-Sewers	Low	Engineering	NAJIM, DOMINIC	12 SEACLIFF DR E	CLOSED	Manhole cover directly across from the Switzer Bus company is loose, like it's been moved off. Across from the bus company right by the Roma Club.	The lid had come off during a major storm. The lid is back in place.
SR-1235	2025-07-30 15:39	Eng-Sewers	Low	Engineering	BEZAIRE AREVALO, DANIEL	55 HODGINS ST	CLOSED	Resident called to report that during rain storms, the storm drain is causing a flood in his basement at 55 Hodgins. He would like a call back to 519-796-6716.	Mainline surcharge due to rain event. Mains are now running fine. Advised resident to install backflow prevention valve.
SR-1236	2025-07-30 15:53	Eng-Sewers	Low	Engineering	BEZAIRE AREVALO, DANIEL	33 ORCHARD HEIGHTS AVE	CLOSED	New drains were installed at the corner of Orchard Heights and Cherrywood. Since then we have been getting water backing up from our sump pump. This has never happened in the 31 years we have been here. Could someone please look into this matter. Your attention to this is greatly appreciated.	Went to the site and CBs are clear to main. Surcharge occurred due to rain event. STM sewer now flowing.
SR-1239	2025-07-30 16:08	Eng-Sewers	Low	Engineering	NAJIM, DOMINIC	45 FOUNDRY ST	CLOSED	Resident reported flooding two times this week due to heavy rainfall please contact at 519-991-1783.	Talked to the resident and explained we had a major storm where the sewers could not take the water away fast enough and caused flooding around town. After storm was over the system drained down.
SR-1246	2025-07-31 09:26	Eng-Sewers	Low	Engineering	NAJIM, DOMINIC	127 CAROLINA WOODS CRES	CLOSED	Sewer adjacent to 127 Carolina Woods is not draining properly, or much at all. The last few rainstorms have flooded out the road making this very hazardous.	Cleaned out the catch basin.
SR-1254	2025-07-31 10:24	Eng-Sewers	Low	Engineering	NAJIM, DOMINIC	35 CLARK ST W	CLOSED	Resident came in to report a flood two times the week of July 28th. She would like a follow up at 519-613-6755.	Talked to the resident and explained we had a major storm where the sewers could not take the water away fast enough and caused flooding around town. After storm was over the system drained down.
SR-1258	2025-07-31 11:07	Eng-Sewers	Low	Engineering	NAJIM, DOMINIC	16 BABKIRK LANE	CLOSED	Drainage in the backyard that goes out to the sewer is backing up. The caller's backyard is starting to flood and water is pooling around the sewer grate. Please provide a follow up call.	Her backyard drain was running slow. Told her she would have to contact a contractor.
SR-1269	2025-07-31 12:35	Eng-Sewers	Low	Engineering	NAJIM, DOMINIC	300-304 SHERK ST	CLOSED	Flooding on the south side of the parking lot of 304 Sherk apartments.	Contacted the building manager to explain it was a private issue.
SR-1273	2025-07-31 14:09	Eng-Sewers	Low	Engineering	BEZAIRE AREVALO, DANIEL	183 ELLISON AVE	CLOSED	Resident called about a new build on the west end of Ellison that has all the sand and mud from the driveway being washed up to the storm sewer grates and plugging them up so they cannot drain properly. He would like a follow up at 519-919-6270.	Sent to Building, CBs clear.
SR-2303	2025-11-12 08:17	Eng-Sewers	Low	Engineering	BEZAIRE AREVALO, DANIEL	19 SEACLIFF DR E	CLOSED	Transcript: It appears that we have a storm sewer that's blocked on our east access way by the road by the sidewalk. So I don't know if that's something you guys can come and clean out or whatever the case is... it looks full and not draining if you want to give me a call back.	Private CB, private issue.
SR-2457	2025-11-28 13:46	Eng-Sewers	Low	Engineering	NAJIM, DOMINIC	74 MARLBOROUGH ST W	CLOSED	Anna called on behalf of her mother. She believes it is a private matter, but wouldn't mind if someone could double check the storm sewers. The other day when it rained, her mother noticed the drain right by her downspout was shooting up water (possibly connected to the storm sewer). There was no flooding in the house or other issues they could see and it seems to have stopped after the rain fall. She was just curious if it is just a private clogged or if it could be a municipal clog. Anna's number is 519-817-7759.	Went to site, no STM cleanout. STM main and SAN main/lateral working properly, seems like a private issue unless resident can find STM cleanout.

Storm Sewer Log

ID	Date	Address	Concern	Action Taken	Comments	Responder
573	2025-04-30	15 JANE ST	SEWER BACKUP IN BASEMENT	PRIVATE PROPERTY - SEWERS RUNNING NORMAL	Went to site, mains running smooth and no water climbing in stack at cleanout. On the west side of the house cleanouts are connected to STM from the roof then goes into house, probably the source of flooding.	DBA
584	2025-06-03	6 SEACLIFF DR E	PARKING LOT FLOODING AFTER HEAVY RAINS	PRIVATE PROPERTY - NO CLEANOUT	Went to site, CB on the east side of the property not draining properly and there was no cleanout at PL. Advised owners that cleanout must be installed or located before municipality takes over.	DBA
607	2025-07-28	26 AIUTO DR	BASEMENT FLOODING AFTER HEAVY RAINS	MUNICIPAL PROPERTY - MAIN LINE STM EVENT	Backup in basement from SAN and STM sewer surcharge due to rain event July 16 and 28 2025.	DBA

Appendix F
Stormwater System Infrastructure Map





Legend

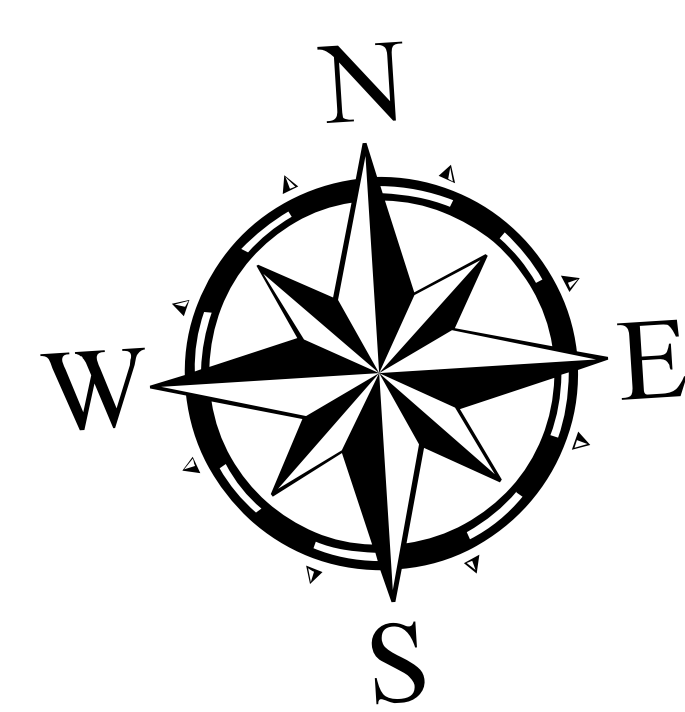
- Storm Sewer Pumps
- > Municipal Drains
- Storm Sewer Mains
- Storm Sewer Force Mains
- Storm Sewer Ponds

Catchment Areas

- ERIE SOUTH
- ESAR POND
- GOLFWOODS PUMP
- MARINA
- ROBSON RD 2ND PUMP
- ROBSON RD PUMP
- SANDY LAKES POND
- SELKIRK
- STURGEON
- Parcels

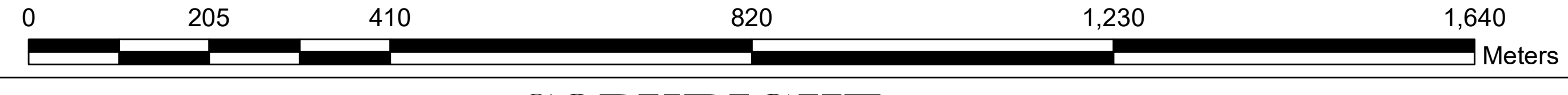
Lake Erie

Sturgeon Creek



TITLE: **MUNICIPALITY OF LEAMINGTON - 2025 STORMWATER MAP (URBAN)**

SCALE: **1:4,900**



COPYRIGHT

This is not a legal plan of survey and the user of this map assumes all risks associated with it. All efforts have been made to ensure accuracy and completeness, however no guarantees can be made. This map is the property of the Corporation of the Municipality of Leamington and may not be reproduced without expressed permission and authorization. Provided by the: Municipality of Leamington - GIS Services
 111 Erie Street North, Leamington, Ontario N8H 2Z9
 TEL: (519) 326-5761 FAX: (519) 326-2481

Municipality of Leamington Storm Sewershed Classification

Table E1 – Storm Sewershed and Associated Treatment

Sewershed	Sewershed Catchment Area (ha)	Tributary or Receiver	Sub-watershed/ Watershed	Stormwater Management Level (A, B, C)	Treatment By Other Municipality	Total Number of Outlets to Environment
Erie South	22.412	Lake Erie	Lake Erie	C	N/A	1
ESAR Pond	6.570	Sturgeon Creek	Lake Erie	A	N/A	1
Golfwood Pump	17.480	Robson Road Pump	Lake Erie	A	N/A	1
Robson Rd 2 nd Pump	14.324	Lake Erie	Lake Erie	C	N/A	1
Robson Rd Pump	8.036	Lake Erie	Lake Erie	C	N/A	1
Sandy Lakes Pond	44.883	N/A – ground infiltration	N/A	A	N/A	0
Selkirk	698.587	Selkirk Drain	Lake Erie	C	N/A	1
Sturgeon	108.269	Sturgeon Creek	Lake Erie	C	N/A	1
Marina	24.275	Lake Erie	Lake Erie	C	N/A	3

Table E2 – Summary of Storm Sewersheds

Stormwater Management Level	Total Number of Outlets to Environment	Total Sewershed Catchment Area (ha)
Level A	2	68.933
Level B	-	-
Level C	8	875.903

9.1.1 Level A – Stormwater receives treatment for water quality and quantity prior to discharge to the environment;

9.1.2 Level B – Stormwater receives treatment for water quality but no water quantity prior to discharge to the environment; and

9.1.3 Level C – Stormwater receives no treatment for water quality prior to discharge to the environment.

Marks filled with an asterisk (*) are mandatory.

This form can be submitted electronically by email to ECA.Submission@ontario.ca or to: Director, Part II.1 of the *Environmental Protection Act*, 135. St. Clair Ave W., Floor 1; Toronto, ON M4V 1P5

Statement of the Owner

I, the undersigned, am authorized to represent the owner of the municipal stormwater management system and hereby declare that to the best of my knowledge, the information contained herein and the information submitted in this notification is complete and accurate and that the Technical Information Contact identified in this application is authorized to act on the owner's behalf for the purpose of processing this notification.

Last Name *

First Name *

Title *

Signature *

Date (YYYY/MM/DD) *

Municipal Stormwater Management System

This form should be used **IF** Director Notification is required by a condition of the Environmental Compliance Approval:

- Within thirty (30) calendar days of the placing into service or completion of any addition, modification, replacement or extension of the municipal stormwater management system, or
- Within ninety (90) calendar days of the discovery of existing works not documented in Schedule B of the Environmental Compliance Approval, or if changes in the description are made of existing works in Schedule B the Environmental Compliance Approval.

Stormwater Management System Owner's Name (Full Legal Name): As identified in the Environmental Compliance Approval *

Stormwater Management System Name: As identified in the Environmental Compliance Approval *

Environmental Compliance Approval Number *

Environmental Compliance Approval Issue Number *

Technical Information Contact

Last Name *

First Name *

Middle Initial

Position/Title *

Telephone Number *

ext.

Email Address *

Municipal Stormwater Management System Alteration Authorization:
(Check the appropriate box that provided the authorization for the alteration and enter the required information within the same row)

- A. Pre-authorized alterations further to Schedule D of the Environmental Compliance Approval (ECA) which would require an alteration of the description of a stormwater management system described in Schedule B of the ECA.
- Form SW2 has been completed and signed by the owner.
- Form SW3 has been completed and signed by the owner.

- B. A Schedule C Notice to the ECA

Schedule C Issue Number	Schedule C Issue Date (YYYY/MM/DD)
-------------------------	------------------------------------

- C. An ECA issued prior to the date of issue of the first consolidated ECA respecting works which were not in service at the time of issuance of the consolidated ECA

ECA Number	ECA Issue Date (YYYY/MM/DD)
------------	-----------------------------

- D. Other works assumed by the owner as a result of another agreement

- E. Discovery of existing works not previously documented in Schedule B of the ECA

- F. Changes made to the description of existing works in Schedule B of the ECA

Description of Alteration: (If additional information is attached, please reference it in this section) *

Date of Placing into Service or Completion of Alteration (YYYY/MM/DD) *

Appendix G
2025 Significant Drinking Water Threat Assessment Report for
Proposed Alterations – Storm Management System



Introduction

This Significant Drinking Water Threat Assessment Report for Proposed Alterations to the municipal Stormwater Management System has been completed in accordance with the Consolidated Linear Infrastructure – Environmental Compliance Approval (CLI-ECA) Number 033-S701. Schedule E, Section 8.0 of the CLI-ECA requires the owner to prepare a report outlining Proposed Alterations to the Authorized System and to update that report annually. This report summarizes alterations up to and including December 31, 2025.

The CLI-ECA applies to the following prescribed drinking water threat activity, as per O.Reg. 287/07 under the Clean Water Act, 2006 Section 1.1(1):

- 2. The establishment, operation or maintenance of a system that collects, stores, transmits, treats or disposes of sewage.

The applicable sub-threats under this prescribed threat are:

- 2.3 Stormwater management facilities and drainage systems: Outfall from a stormwater management facility or stormwater drainage system
- 2.4 Stormwater management facilities and drainage systems: Stormwater infiltration facility

The Clean Water Act, 2006 outlines the prescribed threat, however, the sub-threats, details and definitions are contained in the **2021 Technical Rules** which can be found here: <https://www.ontario.ca/page/2021-technical-rules-under-clean-water-act>. Part XII of this document outlines the rules for defining sub threats and circumstances for drinking water threats and Part XII.2 of the document outlines the Tables of Drinking Water Quality Threats and Sub-Threats. Part XII of the document is also searchable online at <https://threats.swpip.ca/>

For this report, capitalized terms are defined under Schedule D of the CLI-ECA. Namely:

“Authorized System” means the Sewage Works comprising the Municipal Stormwater Management System authorized under this Approval”.

“Alteration(s)” includes the following, in respect of the Authorized System, but does not include repairs to the system:

- a) An extension of the system,
- b) A replacement or retirement of part of the system, or
- c) A modification of, addition to, or enlargement of the system.

Evaluation of Circumstances

As required by the CLI-ECA under Schedule E Section 8.2.1, this section describes the Significant Drinking Water Threats for the Leamington Stormwater Management System, located in:

- a) The Event Based Area (EBA) for the Handling and Storage of Fuel in the Essex Region Source Protection Area (ERSPA)
- b) The Significant Groundwater Recharge Area (SGRA)
- c) The Highly Vulnerable Aquifer (HVA)

There are no circumstances under which the applicable stormwater sub-threat activities could pose a Significant Drinking Water Threat in the above-named vulnerable areas. There are no applicable policies in the Essex Region Source Protection Plan for the applicable stormwater sub-threat activities in the above-named vulnerable areas.

Therefore, there are no circumstances under which Proposed Alterations to the Authorized System could pose a Significant Drinking Water Threat based on the Director's Technical Rules established under the *Clean Water Act* within the above-named vulnerable areas in Leamington. As such, no further action is required in response to Schedule E, sections 8.2.2, 8.2.3, or 8.2.4

Outline of Methodology to Determine Significant Drinking Water Threats for Pre-Authorized Works

As required by Schedule E, Section 8.2.2 of the CLI-ECA, the following is provided as an outline of how the Owner assesses proposed Alterations to identify drinking water threats under the CWA.

A Significant Drinking Water Threat assessment is completed each time an Alteration is proposed by reviewing the project location relative to the vulnerable areas previously mentioned. This is done using the following process:

1. Launch the Ministry's Source Protection Information Atlas.

2. Under Map Legend, Water Quality Layers select Intake Protection Zone 1, 2 and 3, Event Based Areas, Highly Vulnerable Aquifers, and under Water Quantity Layers select Significant Groundwater Recharge Area.
3. Select the location on the map where the project will occur.
4. Click on “Location, Policy, PTTW results”. The Water Quality tab will tell you which vulnerable areas the project location may overlap with and their vulnerability scores. As described below there are no vulnerable areas in Leamington where sub-threats 2.3 or 2.4 are considered to be Significant Drinking Water Threats. Therefore, no action is required beyond making note of the vulnerable areas in which the Works occur.
5. The IPZ 3 for Union Water Supply System (UWSS) and Wheatley Water Treatment Plant (WWTP) overlap with the Municipality of Leamington, however as per the Technical Rules, is not assigned a vulnerability score and therefore no Significant Drinking Water Threats are identified for the applicable sub-threats under the sewage prescribed threat (p. 15, Essex Region Source Protection Plan). Similarly, the EBA for UWSS and WWTP overlaps with the Municipality of Leamington, however the only SDWT in this area is the handling and storage of large volumes of liquid fuel, which cannot be addressed by a CLI-ECA.
6. Some areas of the Municipality of Leamington are within Highly Vulnerable Aquifers and/or Significant Ground Water Recharge Areas. There are no SDWT activities associated with these vulnerable areas.

Summary of Design Considerations and Other Measures

As required by Schedule E, Section 8.2.3, and 8.2.4 of the CLI-ECA, there are no components or equipment that require alterations, or design considerations, required to mitigate risks resulting from construction or operation of the components, equipment or Sewage Works.

Conclusion

This Significant Drinking Water Threat Assessment Report for Proposed Alterations has been completed in accordance with CLI-ECA Number 033-S701, for the projects listed in Table 1. A map outlining the project areas relative to the EBA, HVA and SGRA is appended to this report.

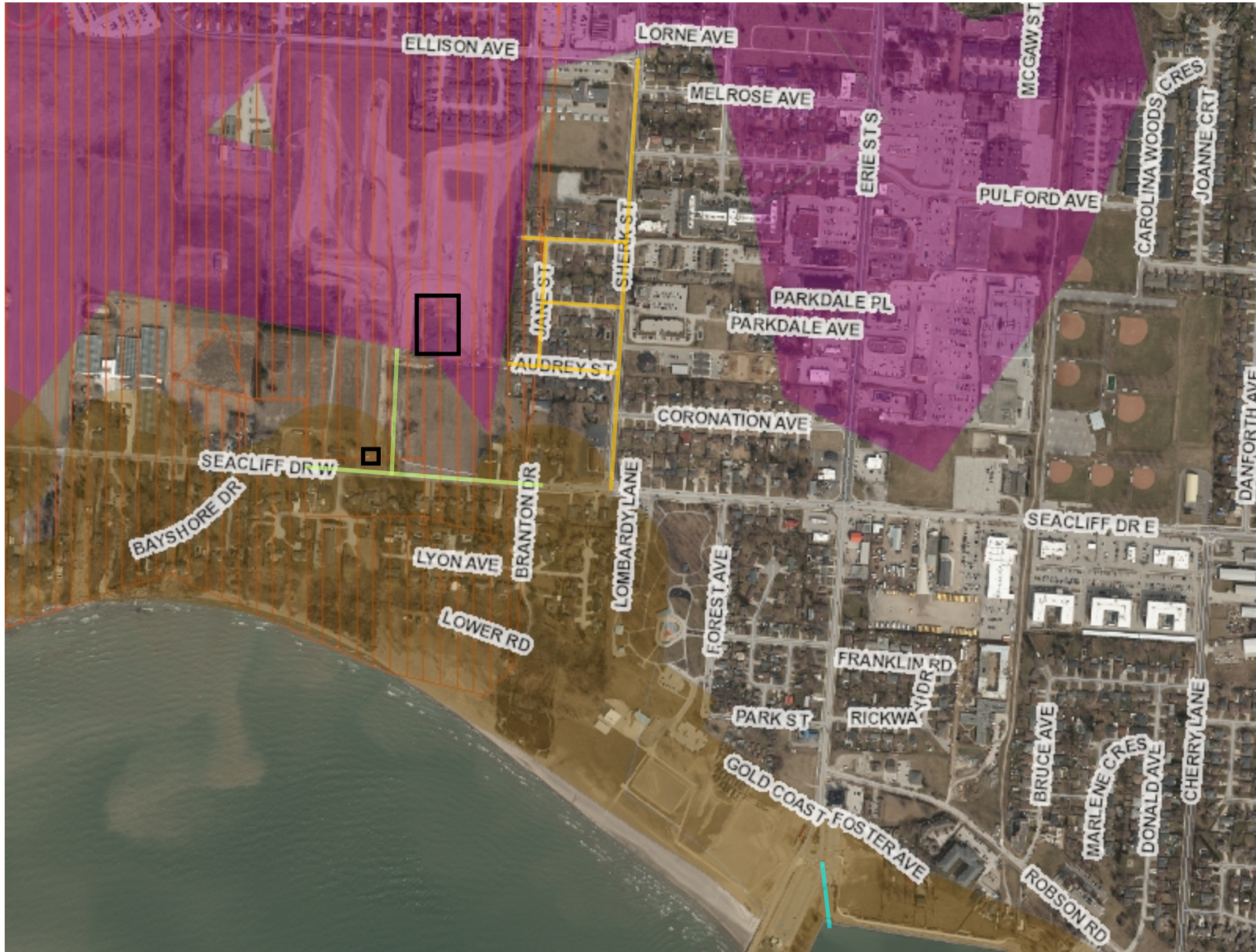
This report summarizes the period up to and including December 31, 2025.

Significant Drinking Water Threat Assessment Report for Proposed Alterations - Stormwater System



Table 1: 2025 Significant Drinking Water Threat Project Summary

Project Name	Significant Drinking Water Threat	Mitigation Measures
Seacliff West Roundabout and Clearwater Street Sewer and Road Reconstruction	No	N/A
Southwest Stormwater Pond and Pumping Station	No	N/A
Margaret, Audrey, Jane, Claire and Sherk Street Sewer Separation and Road Reconstruction	No	N/A
Queen, John, Albert, Baird and Elliott Street Sewer Separation and Road Reconstruction	No	N/A
Erie Street South Outfall Relocation	No	N/A



Legend

- Water Treatment Plant
- Event Based Area
- Highly Vulnerable Aquifer
- Significant Groundwater Recharge
- SW Storm Pond & Pump Station
- Erie Outfall Relocation
- Seac Cliff W Roundabout, Clearwater St Sewer & Road Reconstruction
- Sewer Separation & Road Reconstruction (Margaret, Audrey, Jane, Claire, Sherk)

1: 10,000



508.0 0 254.00 508.0 Meters

2/4/2026 2:59 PM

This map is a user generated static output from an Internet mapping site and is for reference only. Data layers that appear on this map may or may not be accurate, current, or otherwise reliable.

THIS MAP IS NOT TO BE USED FOR NAVIGATION

Notes



Legend

- SurfaceWaterIntake
- EventBasedArea
- ▨ HighlyVulnerableAquifer
- SignificantGroundwaterRechar
- Sewer Separation & Road Reconstruction (Queen, John, Albert, Baird & Elliot)

1: 4,000



203.2 0 101.60 203.2 Meters

2/2/2026 10:29 AM

This map is a user generated static output from an Internet mapping site and is for reference only. Data layers that appear on this map may or may not be accurate, current, or otherwise reliable.

THIS MAP IS NOT TO BE USED FOR NAVIGATION

Notes